

APP CRS	Rwy Idg	2004
061°	TDZE	1436
	Apt Elev	1436

RNAV (GPS) RWY 6

EAGLE'S NEST (W13)

RNP APCH.

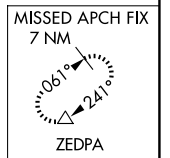
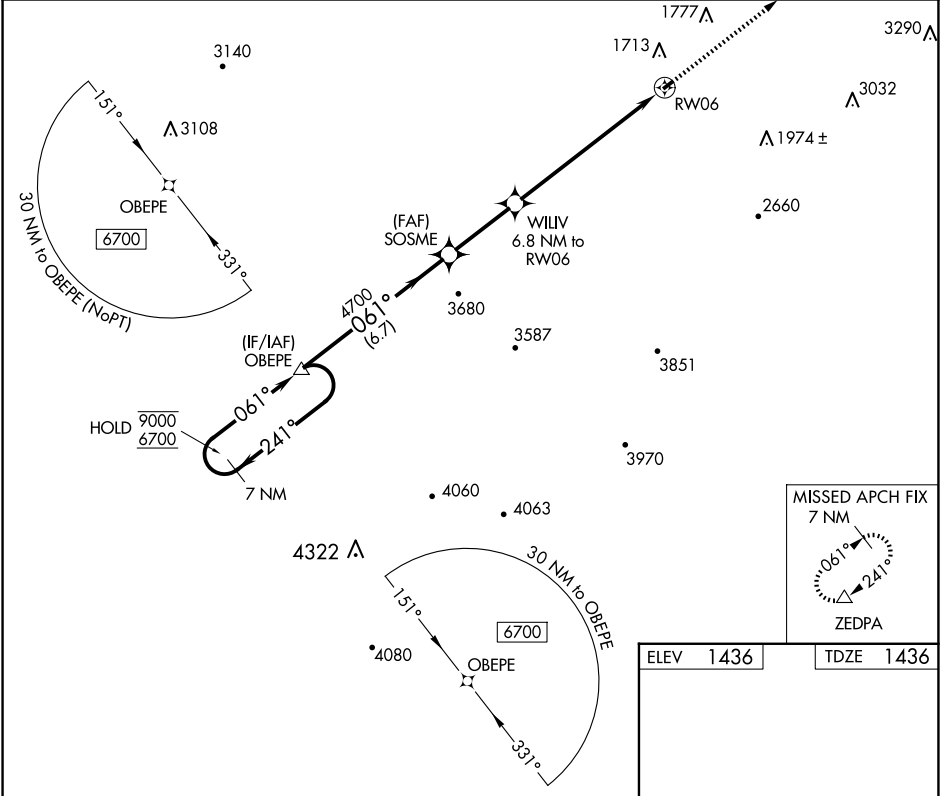
NA Rwy 6 helicopter visibility reduction below 1 SM NA. Procedure NA at night.

MISSED APPROACH: Climb to 6300 direct ZEDPA and hold, continue climb-in-hold to 6300.

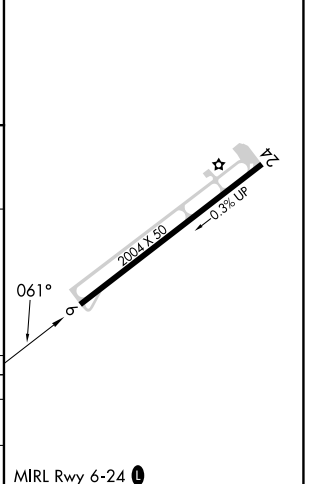
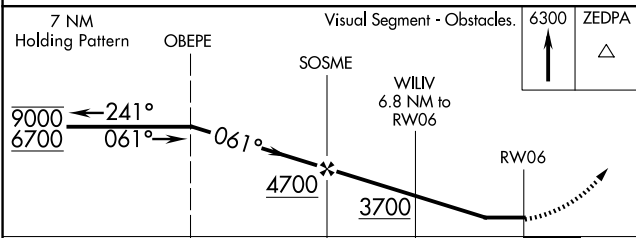
AWOS-3PT
118.625

POTOMAC APP CON
132.85 323.125

UNICOM
123.05 (CTAF) 0



ELEV	1436	TDZE	1436
------	------	------	------



CATEGORY	A	B	C	D
RNAV MDA	2440-3	1004 (1100-3)		NA
C CIRCLING	2440-3	1004 (1100-3)		NA

MIRL Rwy 6-24 0

NE-3, 15 MAY 2025 to 12 JUN 2025

NE-3, 15 MAY 2025 to 12 JUN 2025