

APP CRS	Rwy Idg	2420
190°	TDZE	168
	Apt Elev	168

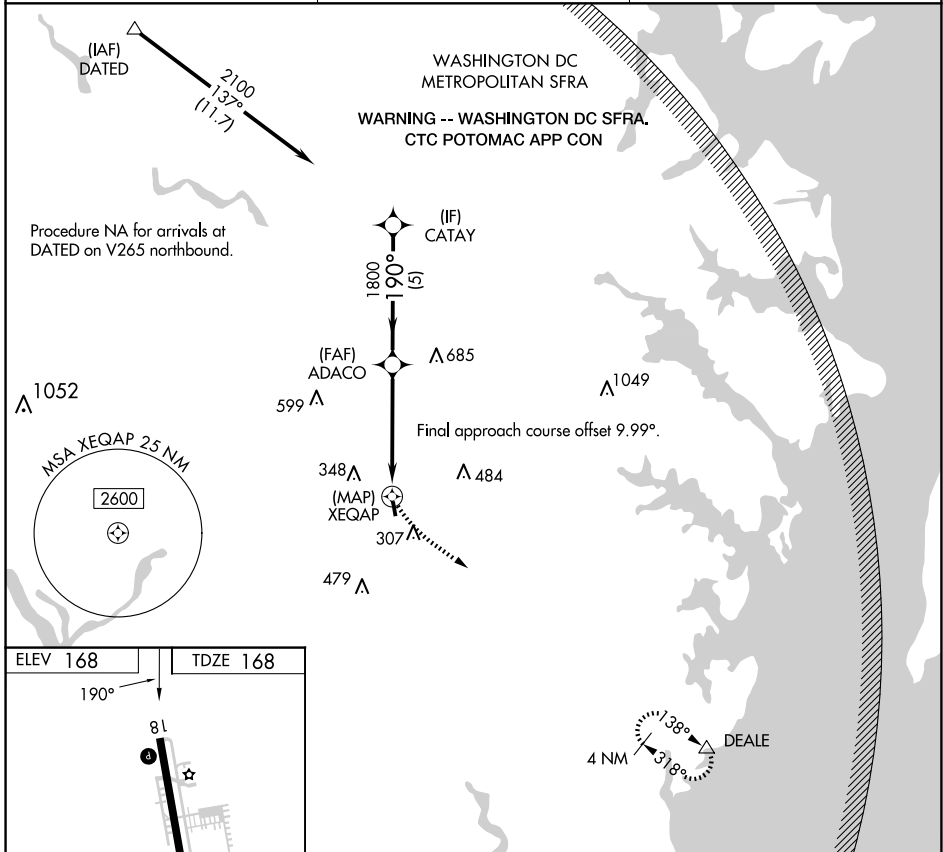
RNAV (GPS) RWY 18

FREEWAY (W00)

⚠ Rwy 18 helicopter visibility reduction below 1 SM NA. DME/DME RNP-0.3 NA.
⚠ NA Procedure NA at night. Use Fort Meade (Odenton) altimeter setting; when not received, use College Park altimeter setting and increase all MDA 20 feet.

MISSED APPROACH: Climbing left turn to 2000 direct DEALE and hold.

FME AWOS-3 123.925	POTOMAC APP CON 128.0 335.5	UNICOM 123.075 (CTAF) 0
------------------------------	---------------------------------------	-----------------------------------



NE-3, 15 MAY 2025 to 12 JUN 2025

NE-3, 15 MAY 2025 to 12 JUN 2025

