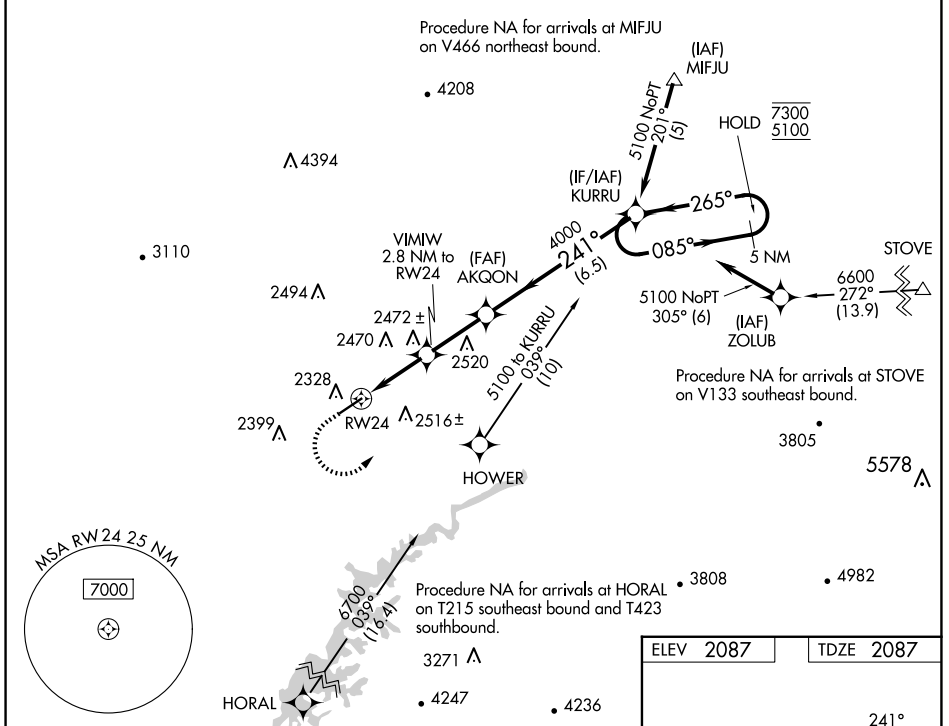


WAAS CH 77827 W24A	APP CRS 241°	Rwy Idg TDZE Apt Elev 5500 2087 2087
--	------------------------	--

RNAV (GPS) RWY 24

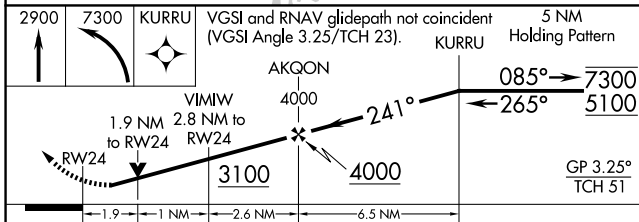
VIRGINIA HIGHLANDS (VJI)

RNP APCH - GPS		ODALS
<p>▼ For uncompensated Baro-VNAV systems, LNAV/VNAV NA below -19°C or above 54°C. Rwy 24 helicopter visibility reduction below ¾ SM NA. Inop table does not apply to LPV. For inop ALS, reduce LNAV/VNAV Cat A/B visibility to 1¼ SM.</p>		<p>MISSED APPROACH: Climb to 2900 then climbing left turn to 7300 direct KURRU and hold, continue climb-in-hold.</p>
AWOS-3 128.125	TRI CITY APP CON ★ 125.25 349.0	UNICOM 122.8 (CTAF) 0



NE-3, 15 MAY 2025 to 12 JUN 2025

NE-3, 15 MAY 2025 to 12 JUN 2025



ELEV 2087	TDZE 2087
<p>MIRL Rwy 6-24 0 REIL Rwy 6 and 24 0</p>	

CATEGORY	A	B	C	D
LPV DA	2451-1		364 (400-1)	
LNAV/VNAV DA	2682-1½		595 (600-1½)	
LNAV MDA	2760-¾	673 (700-¾)	2760-1¾	673 (700-1¾)
CIRCLING	2860-1	773 (800-1)	2860-2¼ 773 (800-2¼)	3080-3 993 (1000-3)