

| | | |
|-------------|----------|-------------|
| APP CRS | Rwy Idg | 4034 |
| 332° | TDZE | 1165 |
| | Apt Elev | 1165 |

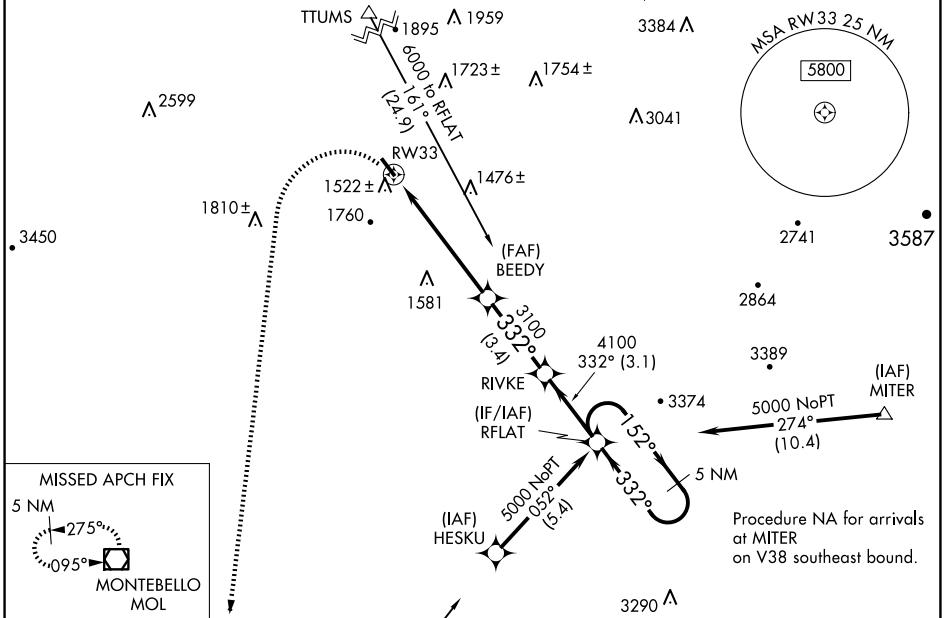
RNAV (GPS) RWY 33

BRIDGEWATER AIR PARK (VBW)

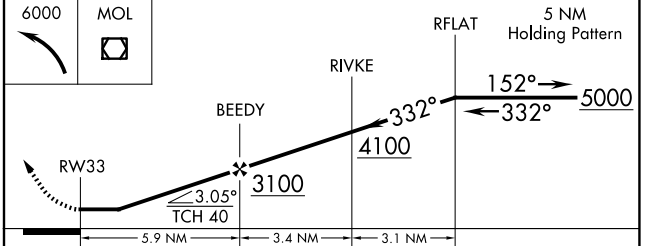
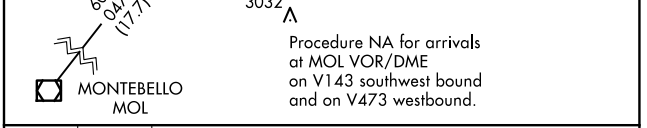
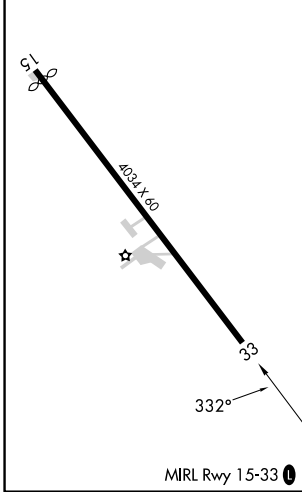
NA DME/DME RNP-0.3 NA. Helicopter visibility reduction below 3/4 SM NA. When local altimeter setting not received, use Staunton/Waynesboro/Harrisonburg altimeter setting and increase all MDA 40 feet.

MISSED APPROACH: Climbing left turn to 6000 direct MOL VOR/DME and hold.

| | | |
|-------------------------|--|-------------------------------|
| AWOS-3 119.55 | POTOMAC APP CON 132.85 323.125 | UNICOM 122.7 (CTAF) |
|-------------------------|--|-------------------------------|



| | |
|-----------|-----------|
| ELEV 1165 | TDZE 1165 |
|-----------|-----------|



| | | | | |
|--|-----------------------|-------------------------|----|---|
| CATEGORY | A | B | C | D |
| LNAV MDA | 1780-1 | 615 (700-1) | NA | |
| <input checked="" type="checkbox"/> CIRCLING | 1860-1 695 (700-1) | 2020-1¼ 855 (900-1¼) | NA | |

NE-3, 15 MAY 2025 to 12 JUN 2025

NE-3, 15 MAY 2025 to 12 JUN 2025