

AL-5369 (FAA)

# ILS or LOC RWY 5

SHENANDOAH VALLEY RGNL (SHD)

LOC I-SHD <b>109.5</b>	APP CRS <b>047°</b>	Rwy Idg <b>6002</b>
		TDZE <b>1184</b>
		Apt Elev <b>1201</b>

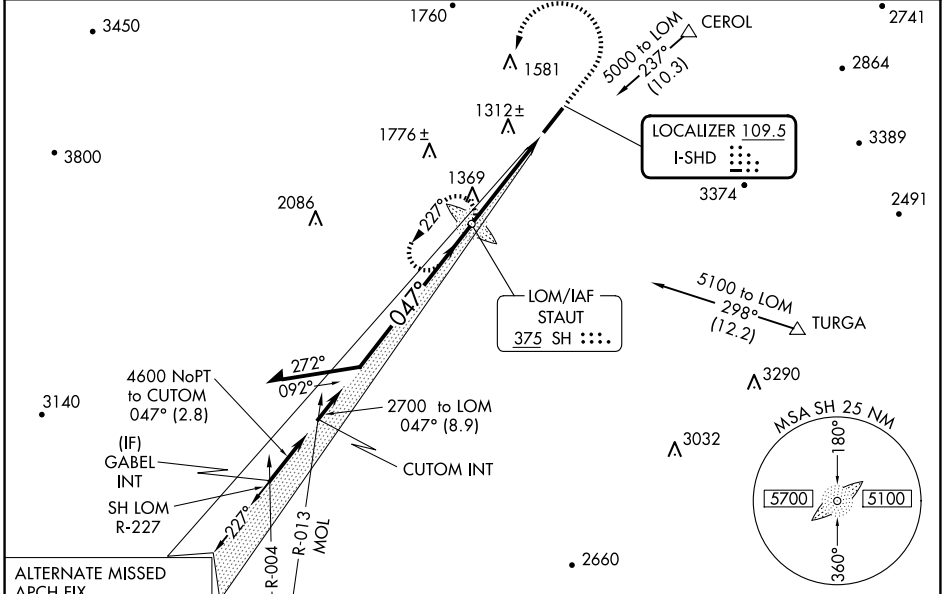
ADF required.

**⚠** Autopilot coupled approach NA below 1533 feet. When local altimeter setting not received, use Charlottesville altimeter setting and increase all DA 130 feet and all MDA 140 feet. Increase S-ILS visibility ¼ SM all Cats, S-LOC 5 visibility Cat C/D ¼ SM, Circling Cat C ½ SM, Cat D ¼ SM. For inop ALS when using Charlottesville altimeter setting, increase S-ILS 5 visibility to 1¼ SM.



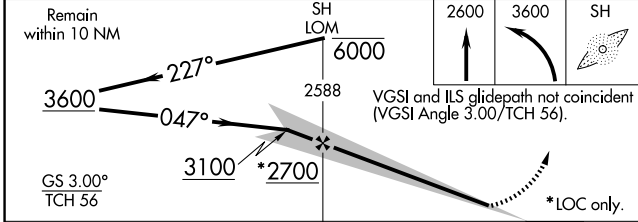
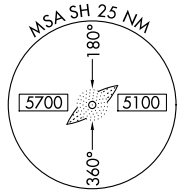
**MISSED APPROACH:**  
Climb to 2600 then climbing left turn to 3600 direct SH LOM and hold.

AWOS-3 <b>124.925</b>	POTOMAC APP CON <b>132.85 323.125</b>	CLNC DEL <b>118.35</b>	UNICOM <b>123.0 (CTAF)</b>
--------------------------	--	---------------------------	-------------------------------



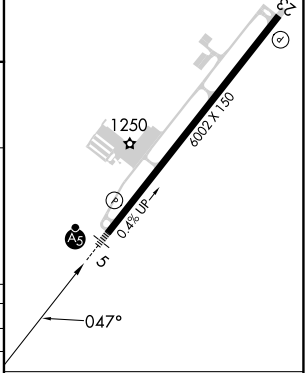
**ALTERNATE MISSED APCH FIX**  
MONTEBELLO  
MOL 115.3  
Chan 100  
R-271 -091°

IAF MONTEBELLO 115.3 MOL Chan 100



ELEV 1201	TDZE 1184
-----------	-----------

REIL Rwy 23   
HIRL Rwy 5-23



CATEGORY	A	B	C	D
S-ILS 5		1384-½	200 (200-½)	
S-LOC 5	1620-½	436 (500-½)	1620-¾ 436 (500-¾)	1620-1 436 (500-1)
CIRCLING	1660-1 459 (500-1)	1760-1 559 (600-1)	1900-2 699 (700-2)	2060-2¾ 859 (900-2¾)

FAF to MAP 4.2 NM

Knots	60	90	120	150	180
Min:Sec	4:12	2:48	2:06	1:41	1:24

NE-3, 15 MAY 2025 to 12 JUN 2025

NE-3, 15 MAY 2025 to 12 JUN 2025