

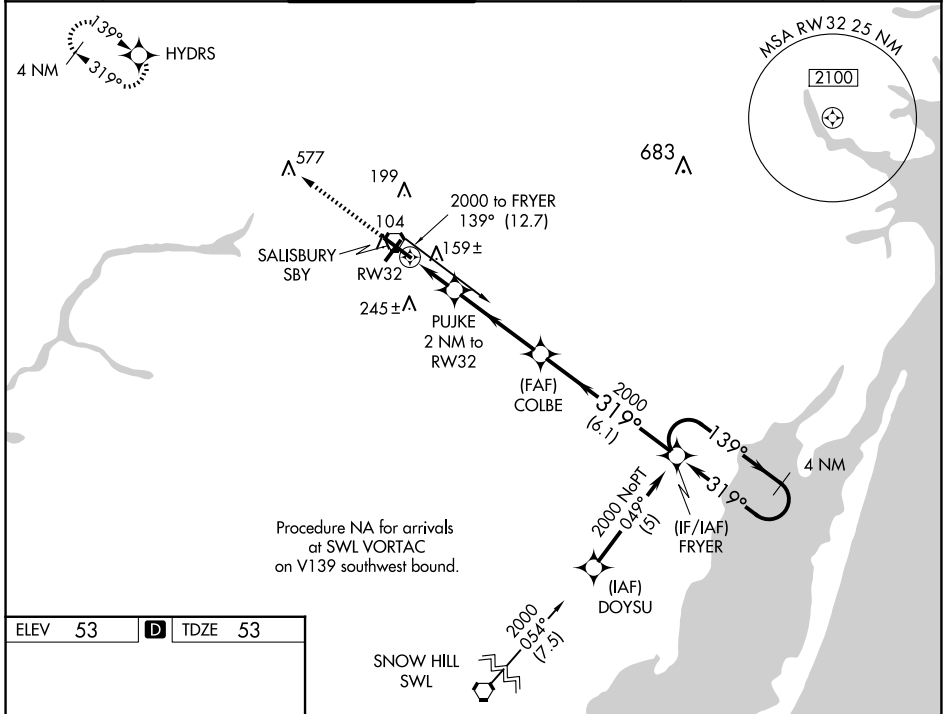
WAAS CH 48912 W32A	APP CRS 319°	Rwy Idg TDZE Apt Elev	6400 53 53
--	------------------------	-----------------------------	---------------------------------------

RNAV (GPS) RWY 32

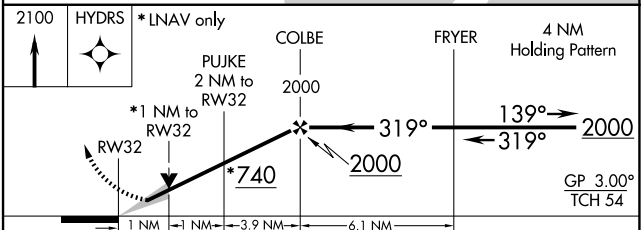
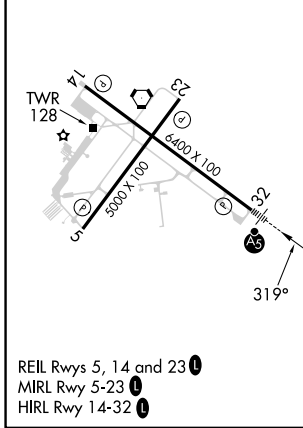
SALISBURY-OCEAN CITY WICOMICO RGNL (SBY)

RNP APCH.	MALSRL	MISSED APPROACH: Climb to 2100 direct HYDRS and hold.
<p>▼ For uncompensated Baro-VNAV systems, LNAV/VNAV NA below -15°C or above 49°C. When local altimeter setting not received use Georgetown altimeter setting: increase LPV DA to 305 feet; increase LNAV/VNAV DA to 510; increase all MDA 60 feet and LNAV Cat C and Circling Cat D visibility ¼ SM. For inoperative MALSRL, increase LNAV Cat D visibility to 1¼ SM. VDP and Baro-VNAV NA when using Georgetown altimeter setting.</p>		

ASOS 118.325	PATUXENT APP CON* 127.95 314.0	SALISBURY TOWER* 119.425 (CTAF) 0	GND CON 123.775	CLNC DEL 123.775	CLNC DEL 132.45 (when twr closed)	UNICOM 122.95
------------------------	--	---	---------------------------	----------------------------	--	-------------------------



ELEV 53	D	TDZE 53
---------	----------	---------



CATEGORY	A	B	C	D
LPV DA		253-½	200 (200-½)	
LNAV/VNAV DA		458-1	405 (500-1)	
LNAV MDA	420-½	367 (400-½)		420-1 367 (400-1)
CIRCLING	480-1 427 (500-1)	520-1 467 (500-1)	560-1½ 507 (600-1½)	700-2 647 (700-2)

NE-3, 15 MAY 2025 to 12 JUN 2025

NE-3, 15 MAY 2025 to 12 JUN 2025