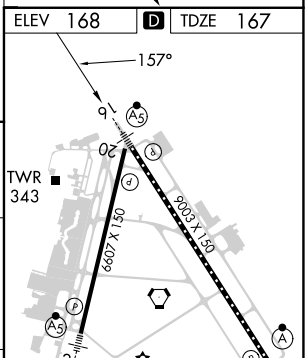
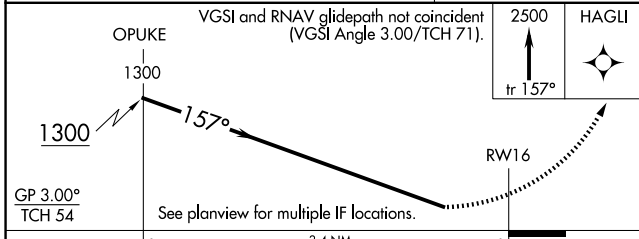
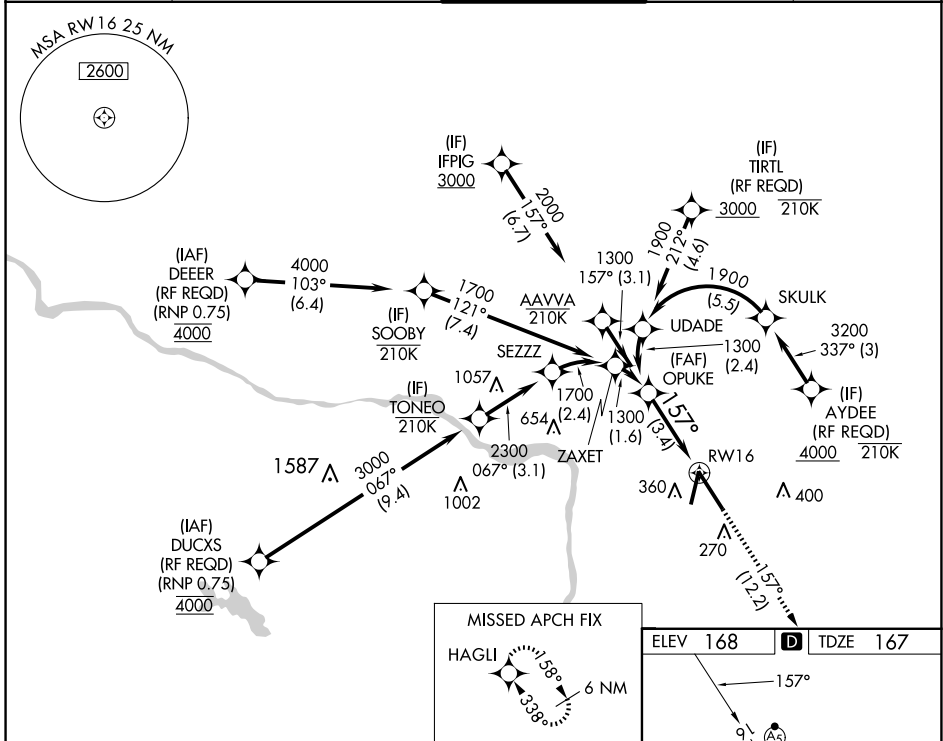


| | | |
|-------------|----------|-------------|
| APP CRS | Rwy Idg | 9003 |
| 157° | TDZE | 167 |
| | Apt Elev | 168 |

RNAV (RNP) Y RWY 16

RICHMOND INTL (RIC)

| | | | | |
|---|---|--------------------|---|---------------------|
| RNP AR APCH. | | MALSR | MISSED APPROACH: Climb to 2500 on track 157° to HAGLI and hold. | |
| <p>▼ For uncompensated Baro-VNAV systems, procedure NA below -11°C (13°F) or above 54°C (130°F). For inop ALS, increase RNP 0.11 all Cats visibility to RVR 5500 and RNP 0.30 all Cats visibility to 1½ SM.</p> | | | | |
| ATIS | POTOMAC APP CON | RICHMOND TOWER | GND CON | CLNC DEL |
| 119.15 263.025 | 126.4 282.375 (001°-185°) 126.75 307.2 (186°-360°) | 121.1 257.8 | 121.9 348.6 | 127.55 348.6 |



| | | | | |
|-------------|---|--------|-------------|---|
| CATEGORY | A | B | C | D |
| RNP 0.11 DA | | 506/40 | 339 (400-¾) | |
| RNP 0.30 DA | | 606/50 | 439 (500-1) | |

AUTHORIZATION REQUIRED

TDZ/CL Rwy 34
HIRL Rwy 2-20 and 16-34
REIL Rwy 20

NE-3, 15 MAY 2025 to 12 JUN 2025

NE-3, 15 MAY 2025 to 12 JUN 2025