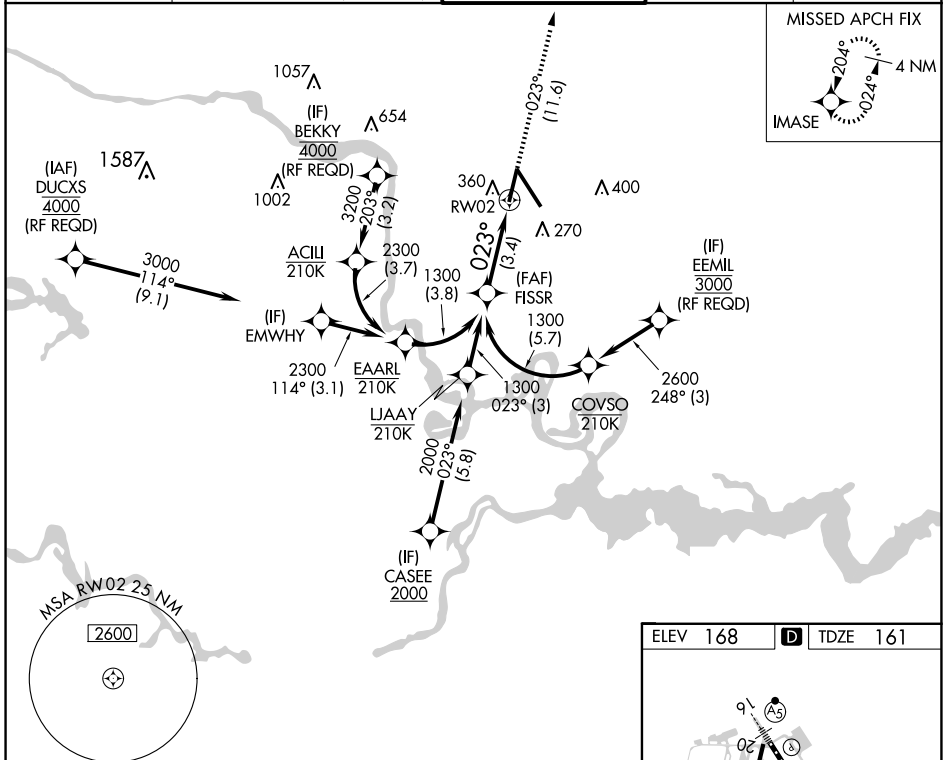


APP CRS	Rwy Idg	6607
023°	TDZE	161
	Apt Elev	168

RNAV (RNP) Y RWY 2

RICHMOND INTL (RIC)

RNP AR APCH.		MISLSR MISLSR MISLSR MISLSR		MISSED APPROACH: Climb to 2100 on track 023° to IMASE and hold.	
For uncompensated Baro-VNAV systems, procedure NA below -11°C (13°F) or above 54°C (130°F). Rwy 2 helicopter visibility reduction below 3/4 SM NA. For inop ALS, increase RNP 0.11 all Cats visibility to 1 SM and RNP 0.3 all Cats visibility to 1 1/4 SM.					
ATIS 119.15 263.025		POTOMAC APP CON 126.4 282.375 (001°-185°) 126.75 307.2 (186°-360°)		RICHMOND TOWER 121.1 257.8	
				GND CON 121.9 348.6	
				CLNC DEL 127.55 348.6	



NE-3, 15 MAY 2025 to 12 JUN 2025

NE-3, 15 MAY 2025 to 12 JUN 2025

