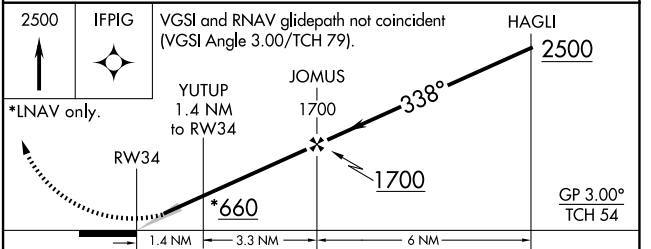
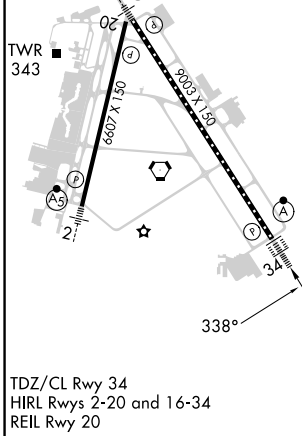
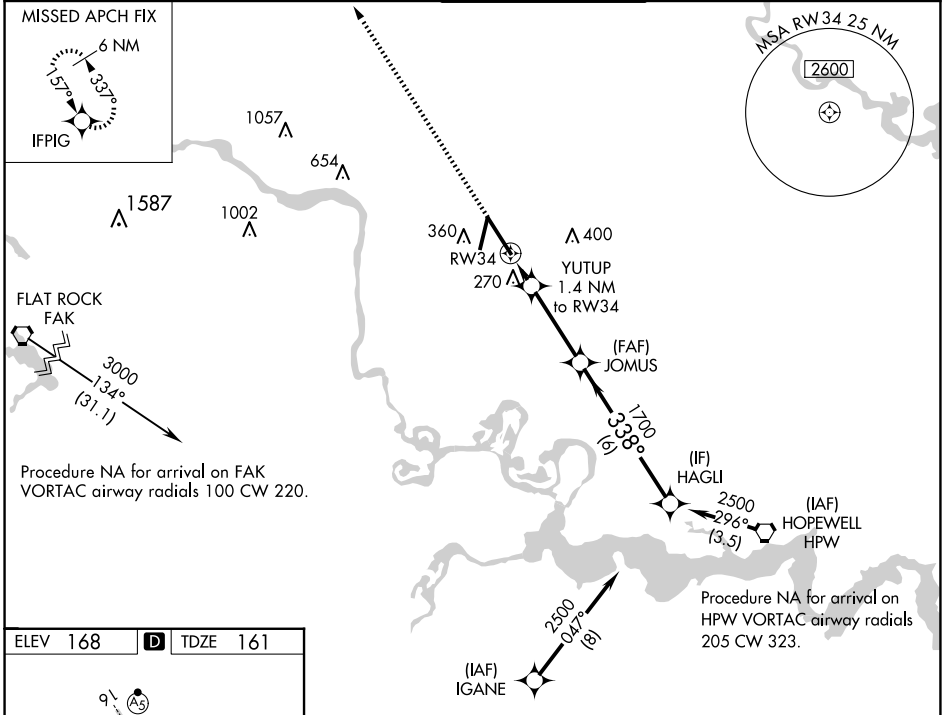


WAAS CH 97520 W34A	APP CRS 338°	Rwy Idg TDZE 161 Apt Elev 168	9003
--	------------------------	---	-------------

RNAV (GPS) Z RWY 34

RICHMOND INTL (RIC)

RNP APCH.		ALSF-2 		MISSED APPROACH: Climb to 2500 direct IFPIG and hold.	
▼ For uncompensated Baro-VNAV systems, LNAV/VNAV NA below -11°C or above 54°C. For inop ALS, increase LNAV/VNAV all Cats visibility to 1¼ SM and LNAV Cats C and D visibility to RVR 5500.		ATIS 119.15 263.025		POTOMAC APP CON 126.4 282.375 (001°-185°) 126.75 307.2 (186°-360°)	
		RICHMOND TOWER 121.1 257.8		GND CON 121.9 348.6	
				CLNC DEL 127.55 348.6	



CATEGORY	A	B	C	D
LPV DA		361/18	200 (200-½)	
LNAV/VNAV DA		530/37	369 (400-¾)	
LNAV MDA	520/24	359 (400-½)	520/30	359 (400-¾)
C CIRCLING	660-1	492 (500-1)	700-1½ 532 (600-1½)	720-2 552 (600-2)

NE-3, 15 MAY 2025 to 12 JUN 2025

NE-3, 15 MAY 2025 to 12 JUN 2025