

# ILS or LOC RWY 34

RICHMOND INTL (RIC)

LOC I-BNE <b>110.7</b>	APP CRS <b>337°</b>	Rwy Idg TDZE <b>161</b> Apt Elev <b>168</b>	<b>9003</b>
---------------------------	------------------------	---------------------------------------------------	-------------

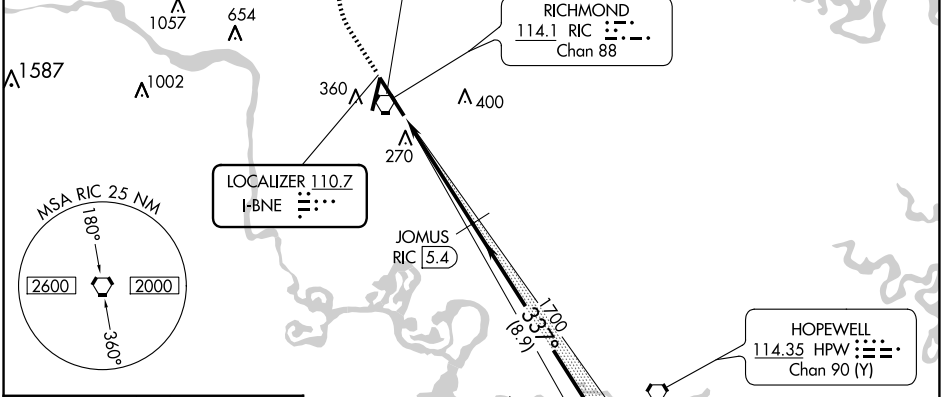
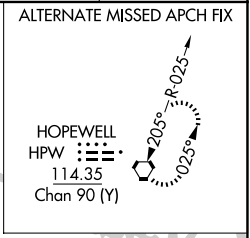
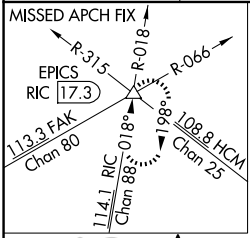
DME required for LOC only.

▼ For inop ALS, increase S-ILS 34 Cat E visibility to RVR 4000 and S-LOC 34 Cat E visibility to 1/2 SM. DME from RIC VORTAC. DME use requires simultaneous reception of I-BNE and RIC DME.



MISSED APPROACH: Climb to 800 then climbing right turn to 2000 on RIC VORTAC R-018 to EPICS INT/RIC 17.3 DME and hold.

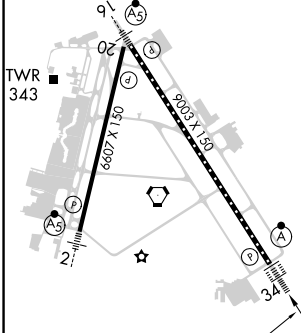
ATIS <b>119.15 263.025</b>	POTOMAC APP CON <b>126.4 282.375</b> (001°-185°) <b>126.75 307.2</b> (186°-360°)	RICHMOND TOWER <b>121.1 257.8</b>	GND CON <b>121.9 348.6</b>	CLNC DEL <b>127.55 348.6</b>
-------------------------------	----------------------------------------------------------------------------------------	--------------------------------------	-------------------------------	---------------------------------



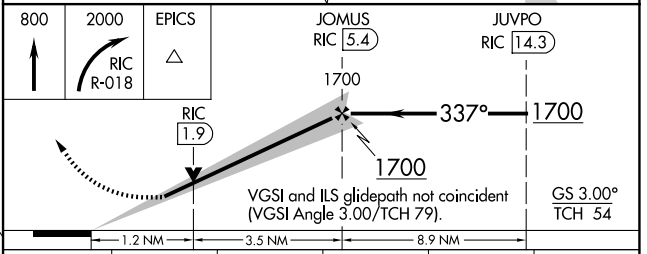
NE-3, 15 MAY 2025 to 12 JUN 2025

NE-3, 15 MAY 2025 to 12 JUN 2025

ELEV <b>168</b>	<b>D</b>	TDZE <b>161</b>
-----------------	----------	-----------------



TDZ/CL Rwy 34	HIRL Rws 2-20 and 16-34	REIL Rwy 20			
FAF to MAP 4.7 NM					
Knots	60	90	120	150	180
Min:Sec	4:42	3:08	2:21	1:53	1:34



CATEGORY	A	B	C	D	E
S-ILS 34	361/18		200 (200-1/2)		
S-LOC 34	620/24	459 (500-1/2)	620/45	459 (500-7/8)	
<b>C</b> CIRCLING	660-1	492 (500-1)	700-1 1/2 532 (600-1 1/2)	720-2 552 (600-2)	740-2 572 (600-2)