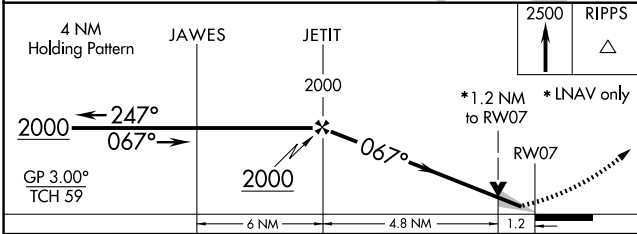
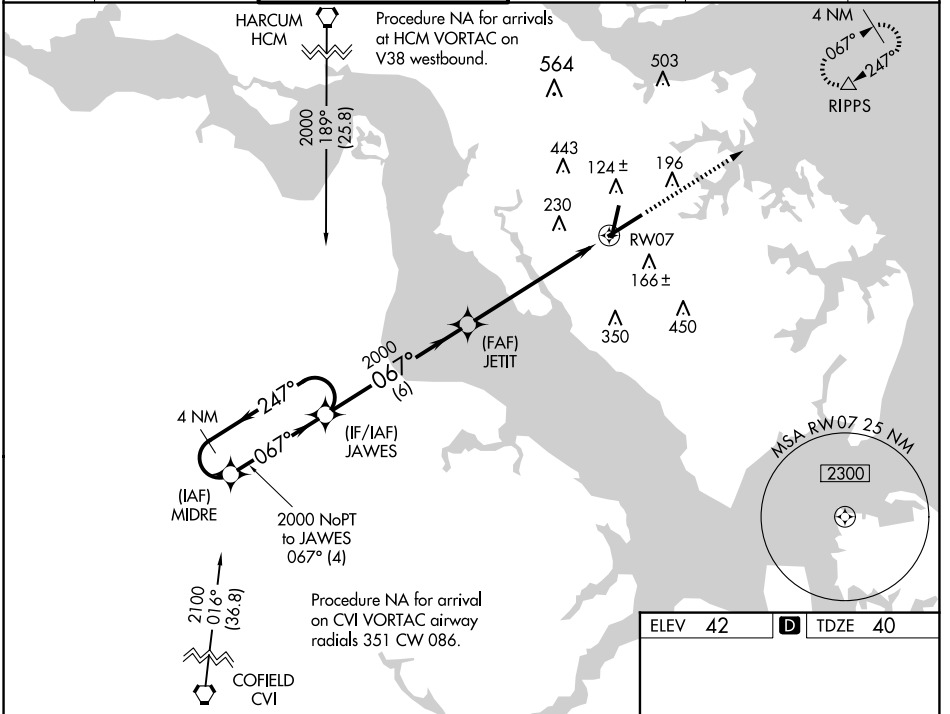


WAAS CH <b>45607</b> <b>W07A</b>	APP CRS <b>067°</b>	Rwy Idg <b>8003</b> TDZE <b>40</b> Apt Elev <b>42</b>
--	------------------------	---

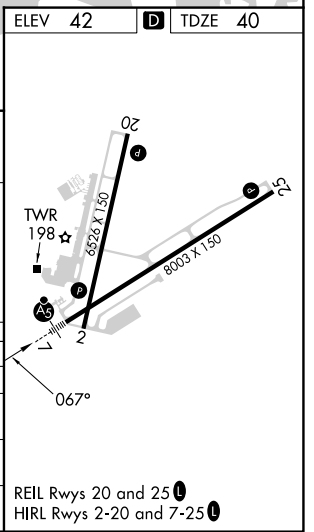
# RNAV (GPS) RWY 7

NEWPORT NEWS/WILLIAMSBURG INTL (PHF)

RNP APCH. For uncompensated Baro-VNAV systems, LNAV/VNAV NA below -11°C or above 54°C. For inop MALSR, increase LNAV/VNAV all Cats visibility to 1 3/8.		MALSR 	MISSED APPROACH: Climb to 2500 direct RPPS and hold.		
ATIS <b>128.65</b>	NORFOLK APP CON <b>125.7 335.625</b>	NEWPORT NEWS TOWER ★ <b>118.7 (CTAF) 0 257.9</b>	GND CON <b>121.9 348.6</b>	CLNC DEL <b>121.65 225.4</b>	UNICOM <b>122.95</b>



CATEGORY	A	B	C	D
LPV DA		243/24	203 (300-1/2)	
LNAV/VNAV DA		474/50	434 (500-1)	
LNAV MDA	480/24	440 (500-1/2)	480/40	440 (500-3/4)
CIRCLING	520-1 478 (500-1)	540-1 498 (500-1)	760-2 718 (800-2)	780-2 1/4 738 (800-2 1/4)



NE-3, 15 MAY 2025 to 12 JUN 2025

NE-3, 15 MAY 2025 to 12 JUN 2025