

VORTAC RIC <b>114.1</b> Chan <b>88</b>	APP CRS <b>165°</b>	Rwy Idg TDZE Apt Elev	<b>5402</b> <b>207</b> <b>207</b>
--	------------------------	-----------------------------	---

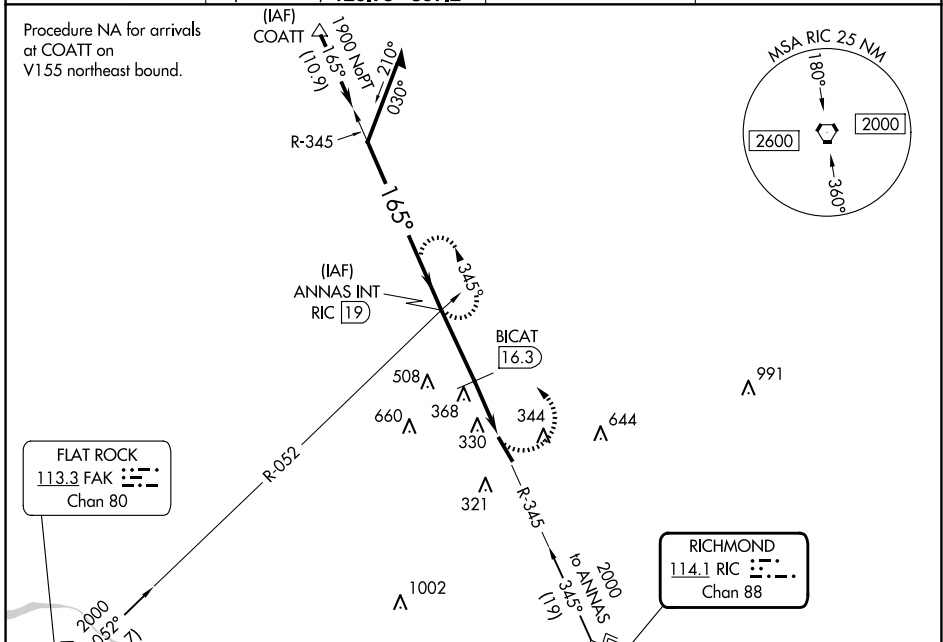
# VOR RWY 16

HANOVER COUNTY MUNI (OFP)

**⚠** When local altimeter setting not received, use Richmond Intl altimeter setting and increase all MDA 40 feet. Rwy 16 helicopter visibility reduction below ¼ SM NA.

**⚠** MISSED APPROACH: Climbing left turn to 2000 via RIC R-345 to ANNAS INT/19 DME and hold.

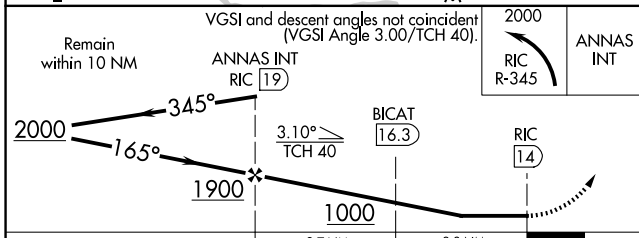
ASOS <b>119.025</b>	POTOMAC APP CON (001°-185°) <b>126.4 307.2</b> (186°-360°) <b>126.75 307.2</b>	CLNC DEL <b>125.4</b>	UNICOM <b>122.7</b> (CTAF) <b>📞</b>
------------------------	--	--------------------------	--



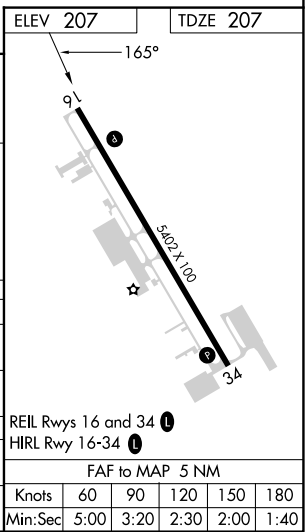
NE-3, 15 MAY 2025 to 12 JUN 2025

NE-3, 15 MAY 2025 to 12 JUN 2025

ELEV 207	TDZE 207
----------	----------



CATEGORY	A	B	C	D
S-16	1000-1 793 (800-1)	1000-1¼ 793 (800-1¼)	1000-2¼ 793 (800-2¼)	1000-2½ 793 (800-2½)
<b>C</b> CIRCLING	1000-1 793 (800-1)	1000-1¼ 793 (800-1¼)	1000-2¼ 793 (800-2¼)	1020-2¾ 813 (900-2¾)
<b>BICAT FIX MINIMUMS (DME REQUIRED)</b>				
S-16	820-1	613 (700-1)	820-1¾	613 (700-1¾)
<b>C</b> CIRCLING	820-1	613 (700-1)	900-2 693 (700-2)	1020-2¾ 813 (900-2¾)



REIL Rwy 16 and 34 <b>📞</b>	
HIRL Rwy 16-34 <b>📞</b>	
FAF to MAP 5 NM	
Knots	60 90 120 150 180
Min:Sec	5:00 3:20 2:30 2:00 1:40