

LOC/DME I-SGC <b>110.1</b> Chan <b>38</b>	APP CRS <b>191°</b>	Rwy ldg <b>11500</b> TDZE <b>302</b> Apt Elev <b>312</b>
---	------------------------	--

# ILS RWY 19L (SA CAT II)

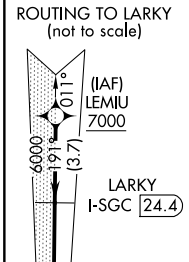
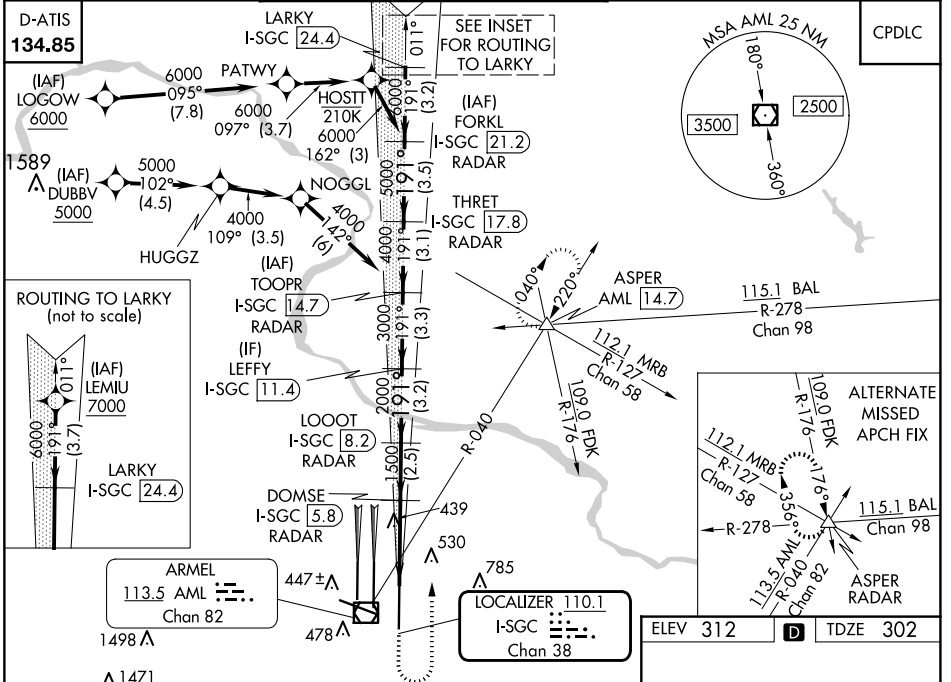
## WASHINGTON DULLES INTL (IAD)

RNP APCH - GPS. From LOGOW, or DUBBV, or LEMIU.  
 DME or RADAR required. RADAR required for procedure entry at LEMIU.  
 Simultaneous approach authorized.  
 Requires specific OPSPEC, MSP/EC, or LOA approval.

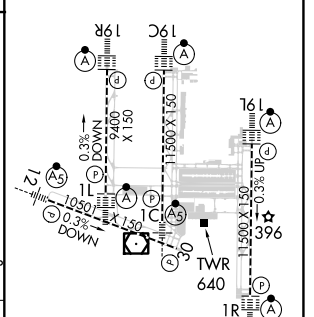
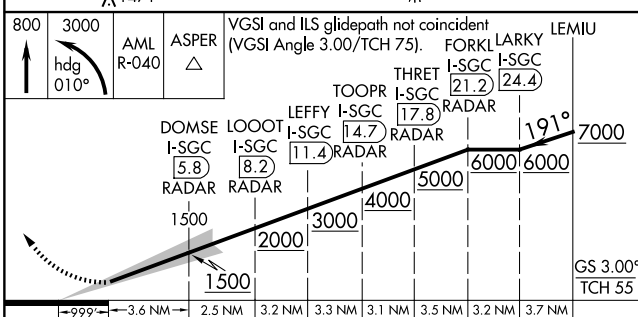


MISSED APPROACH: Climb to 800 then climbing left turn to 3000 on heading 010° and on AML VOR/DME R-040 to ASPER INT/AML 14.7 DME and hold.

POTOMAC APP CON <b>120.45 306.925</b> (241°-330°) <b>128.525 306.925</b> (091°-240°) <b>126.1 338.25</b> (331°-090°)		DULLES TOWER <b>120.1 317.8</b> (Rwys 1R/19L) <b>120.25 348.6</b> (Rwys 1C/19C) <b>134.425 348.6</b> (Rwys 1L/19R and 12/30)		GND CON <b>121.9 317.8</b> (EAST) <b>121.625 348.6</b> (WEST)	CLNC DEL <b>135.7 317.8</b>
---	--	---	--	---	--------------------------------



ELEV 312	<b>D</b>	TDZE 302
----------	----------	----------



CATEGORY	A	B	C	D
S-ILS 19L	RA 100/12 100 DA 402			

### SA CATEGORY II ILS - SPECIAL AIRCREW & AIRCRAFT CERTIFICATION REQUIRED

TDZ/CL Rwys 1C, 1L, 1R, 12, 19C and 19R  
 REIL Rwy 30  
 HIRL all Rwys

NE-3, 15 MAY 2025 to 12 JUN 2025

NE-3, 15 MAY 2025 to 12 JUN 2025