

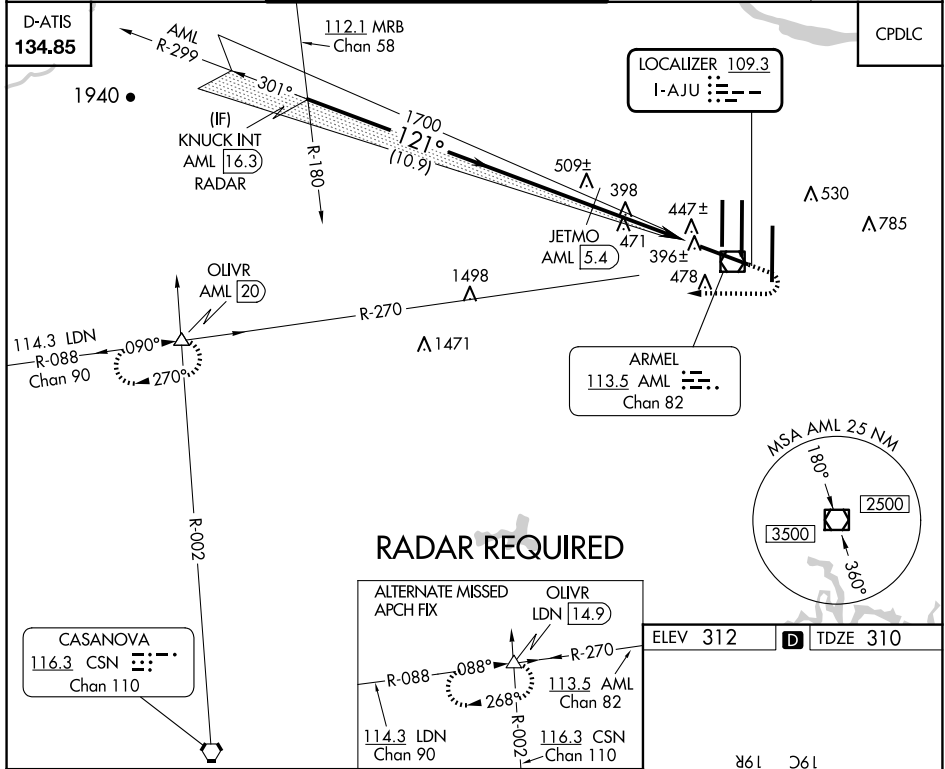
LOC <b>I-AJU</b> <b>109.3</b>	APP CRS <b>121°</b>	Rwy Idg <b>10501</b> TDZE <b>310</b> Apt Elev <b>312</b>
----------------------------------	------------------------	--

# ILS or LOC/DME RWY 12

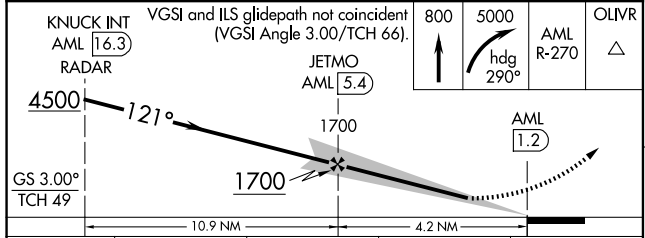
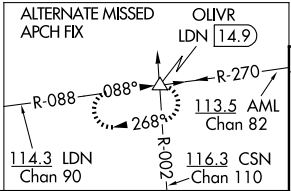
WASHINGTON DULLES INTL (IAD)

DME required for LOC only.		MALSR	MISSED APPROACH: Climb to 800 then climbing right turn to 5000 via heading 290° and AML VOR/DME R-270 to OLIVR INT/AML 20 DME and hold, continue climb-in-hold to 5000.
DME from AML VOR/DME. Simultaneous reception of I-AJU and AML DME required.			

POTOMAC APP CON <b>120.45 306.925</b> (241°-330°) <b>128.525 306.925</b> (091°-240°) <b>126.1 338.25</b> (331°-090°)	DULLES TOWER <b>120.1 317.8</b> (Rwys 1R/19L) <b>120.25 348.6</b> (Rwys 1C/19C) <b>134.425 348.6</b> (Rwys 1L/19R and 12/30)	GND CON <b>121.9 317.8</b> (EAST) <b>121.625 348.6</b> (WEST)	CLNC DEL <b>135.7 317.8</b>
---	---	---	--------------------------------



## RADAR REQUIRED



CATEGORY	A	B	C	D
S-ILS 12	510/18 200 (200-½)			
S-LOC 12	740/24	430 (500-½)	740/40	430 (500-¾)
CIRCLING	940-1	628 (700-1)	940-1¾ 628 (700-1¾)	1180-2¾ 868 (900-2¾)

