

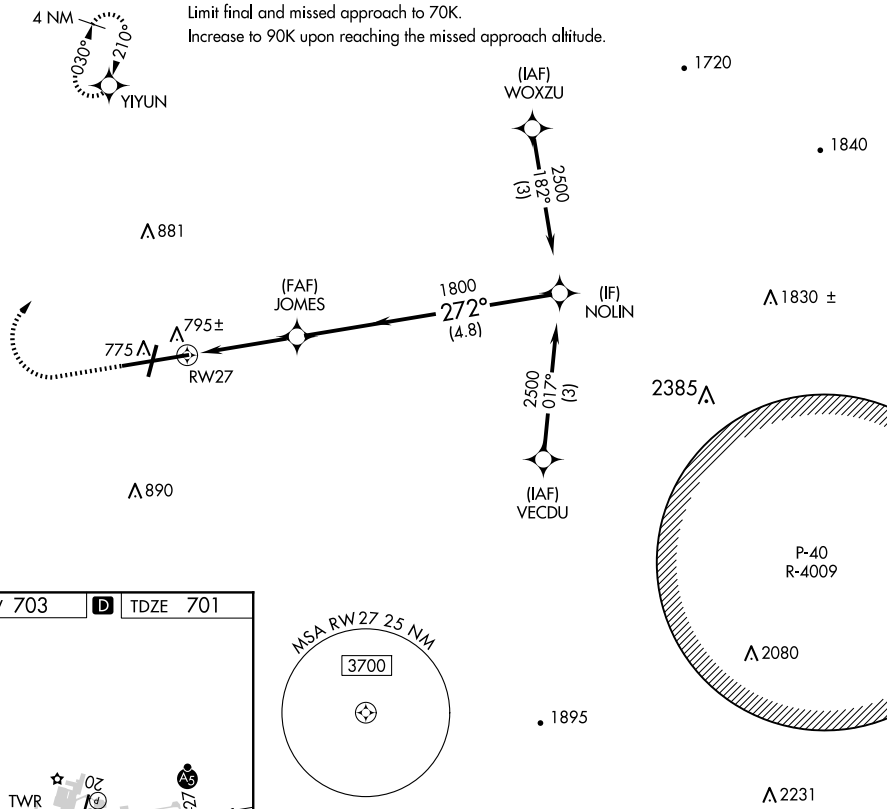
APP CRS	Rwy Idg	<b>7000</b>
<b>272°</b>	TDZE	<b>701</b>
	Apt Elev	<b>703</b>

# COPTER RNAV (GPS) RWY 27

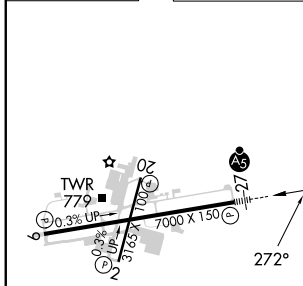
HAGERSTOWN RGNL/RICHARD A HENSON FLD (HGR)

<p><b>▼</b> Inop table does not apply. DME/DME RNP-0.3 NA. VDP NA with Martinsburg altimeter setting. When local altimeter setting not received, use Martinsburg altimeter setting and increase MDA 80 feet.</p>		<p>MALSRS</p>	<p>MISSED APPROACH: Climb to 1200 then climbing right turn to 2500 direct YIYUN and hold.</p>	
ASOS	POTOMAC APP CON	HAGERSTOWN TOWER ★	GND CON	UNICOM
<b>126.375</b>	<b>126.825 239.025</b>	<b>120.3 (CTAF) 0 225.4</b>	<b>120.8</b>	<b>122.95</b>

Limit initial and intermediate approach to 90K.  
 Limit final and missed approach to 70K.  
 Increase to 90K upon reaching the missed approach altitude.



ELEV 703	<b>D</b>	TDZE 701
----------	----------	----------



1200	2500	YIYUN	VGSIs and descent angles not coincident (VGSIs Angle 3.00/TCH 55).	
		JOMES	NOLIN	2500
CATEGORY		COPTER		
LNAV MDA		1060-1/2 359 (400-1/2)		

REIL Rwy 2 and 20  
 REIL Rwy 9  
 MIRL Rwy 2-20  
 HIRL Rwy 9-27

NE-3, 15 MAY 2025 to 12 JUN 2025

NE-3, 15 MAY 2025 to 12 JUN 2025