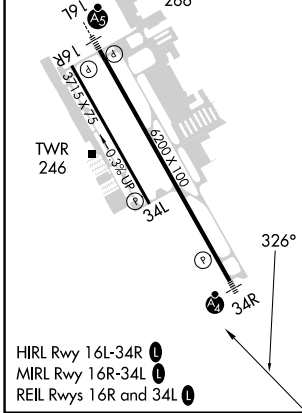
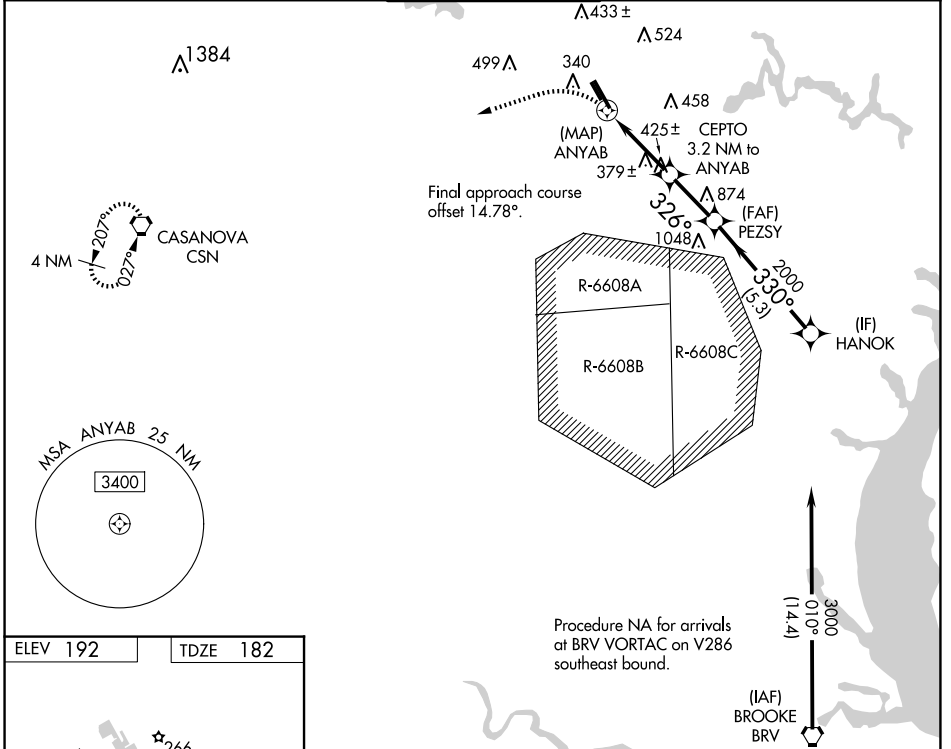


| | | |
|--|------------------------|---|
| WAAS CH 56239 W34B | APP CRS 326° | Rwy Idg 3715 TDZE 182 Apt Elev 192 |
|--|------------------------|---|

RNAV (GPS) RWY 34L

MANASSAS RGNL/HARRY P DAVIS FLD (HEF)

| | | | | |
|--|---|---|-------------------------|--------------------------|
| <p>⚠ DME/DME RNP-0.3 NA. When local altimeter setting not received, use Washington Dulles Intl altimeter setting and increase all MDA 60 feet; increase LNAV Cat C/D and Circling Cat C and D visibility ¼ mile. Helicopter visibility reduction below ¾ SM NA.</p> | | <p>MISSED APPROACH: Climbing left turn to 3000 direct CSN VORTAC and hold.</p> | | |
| ATIS 125.175 | POTOMAC APP CON 128.525 306.925 | MANASSAS TOWER * 133.1 (CTAF) 0 360.75 | GND CON 121.8 | CLNC DEL 120.2 |



| | | | | | |
|-------------------|-----|--|-----------------------|------------------------------|------------------------------|
| 3000 | CSN | VGSi and descent angles not coincident (VGSi Angle 3.00/TCH 43). | | HANOK | |
| | | 0.9 NM to ANYAB | CEPTO 3.2 NM to ANYAB | | |
| | | ANYAB | PEZSY | | |
| | | 1260 | 2000 | 3000 | |
| | | 0.4 | 0.9 | 2.4 NM | |
| | | | 2.3 NM | 5.3 NM | |
| | | | 326° | 330° | |
| | | | 2.79° | | |
| | | | TCH 40 | | |
| CATEGORY | | A | B | C | D |
| LP MDA | | 640-1 | 458 (500-1) | 640-1 3/8 | 458 (500-1 3/8) |
| LNAV MDA | | 680-1 | 498 (500-1) | 680-1 3/8 | 498 (500-1 3/8) |
| C CIRCLING | | 720-1 528 (600-1) | 740-1 548 (600-1) | 840-1 3/4 648 (700-1 3/4) | 880-2 1/4 688 (700-2 1/4) |

NE-3, 15 MAY 2025 to 12 JUN 2025

NE-3, 15 MAY 2025 to 12 JUN 2025