

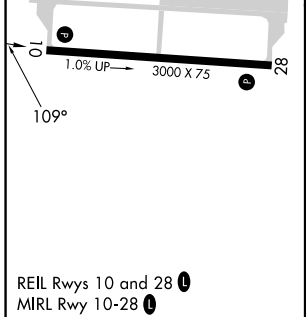
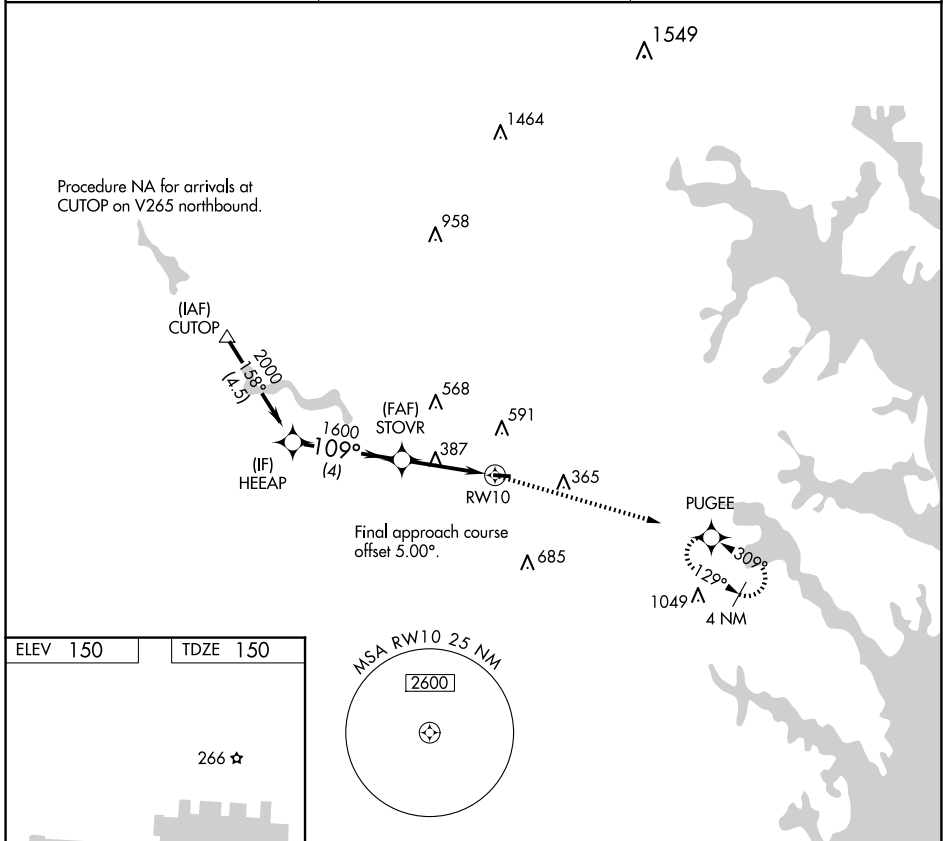
APP CRS	Rwy Idg	<b>3000</b>
<b>109°</b>	TDZE	<b>150</b>
	Apt Elev	<b>150</b>

# RNAV (GPS) RWY 10

TIPTON (FME)

RNP APCH - GPS.		MISSED APPROACH: Climb to 2100 direct PUGEE and hold.
<p>▼ Rwy 10 helicopter visibility reduction below 1 SM NA.                  ▲ Straight-in Rwy 10 NA at night, Circling Rwy 10 NA at night.</p>		

AWOS-3 <b>123.925</b>	POTOMAC APP CON <b>119.7 290.475</b>	UNICOM <b>123.05 (CTAF) 0</b>
--------------------------	-----------------------------------------	----------------------------------



	VGSIs and descent angles not coincident (VGSi Angle 4.00/51).			2100	PUGEE
				↑	✧
CATEGORY	A	B	C	D	
LNAV MDA	780-1	630 (700-1)			NA
CIRCLING	820-1 670 (700-1)	960-1 810 (900-1)			NA

NE-3, 15 MAY 2025 to 12 JUN 2025

NE-3, 15 MAY 2025 to 12 JUN 2025