

APP CRS	Rwy Idg	4977
270°	TDZE	40
	Apt Elev	40

RNAV (GPS) RWY 27

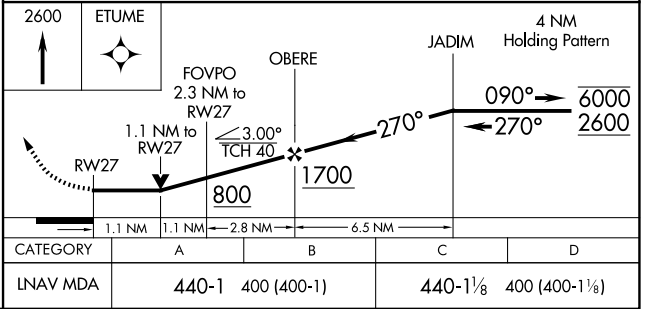
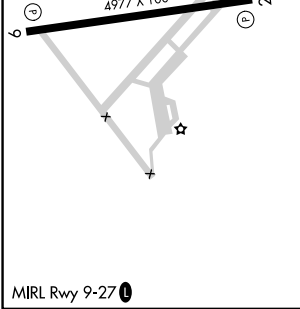
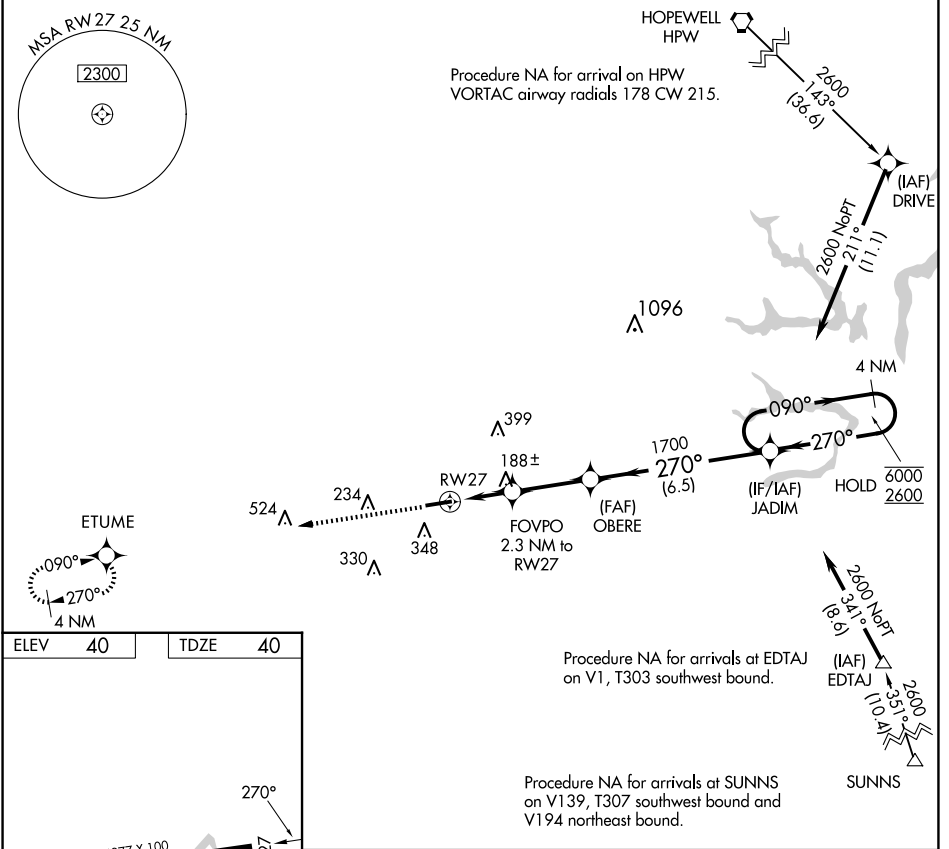
FRANKLIN RGNL (FKN)

RNP APCH - GPS.

⚠ Rwy 27 helicopter visibility reduction below 3/4 SM NA.

MISSED APPROACH: Climb to 2600 direct ETUME and hold.

AWOS-3PT 124.675	NORFOLK APP CON 127.9 269.425	UNICOM 122.8 (CTAF) 0
----------------------------	---	---------------------------------



NE-3, 15 MAY 2025 to 12 JUN 2025

NE-3, 15 MAY 2025 to 12 JUN 2025