

RNAV (GPS) RWY 5

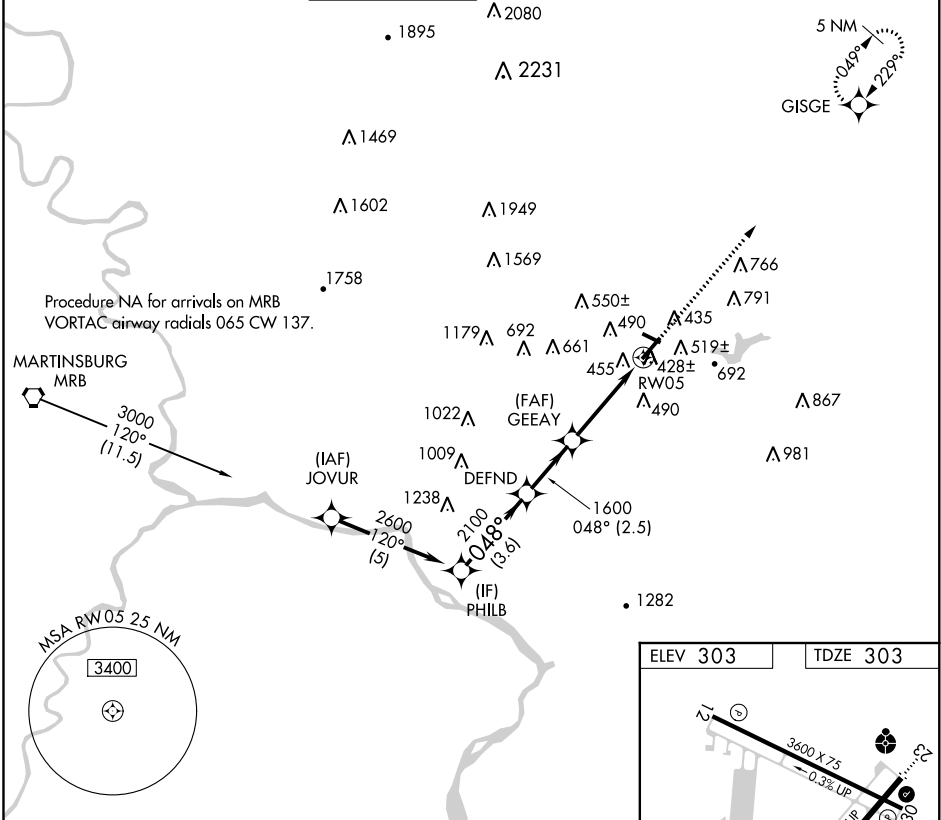
FREDERICK MUNI (F'DK)

APP CRS 048°	Rwy ldg 5219
	TDZE 303
	Apt Elev 303

▼ DME/DME RNP -0.3 NA. When local altimeter setting not received, use Leesburg altimeter setting and increase all MDA 80 feet; increase LNAV Cat D and Circling Cats C/D visibility ¼ mile. Night Landing: Rwy 30 NA. Helicopter visibility reduction below ¼ SM NA.

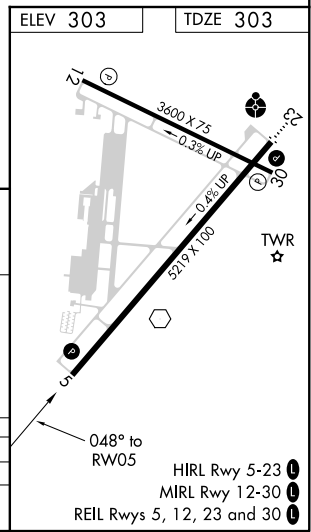
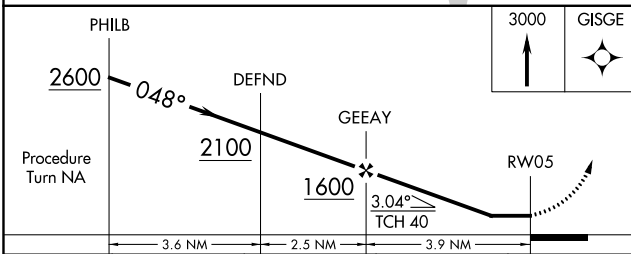
MISSED APPROACH:
Climb to 3000 direct GISGE and hold.

ATIS 124.875	POTOMAC APP CON 125.525 291.625	FREDERICK TOWER ★ 132.4 (CTAF) 0	GND CON 121.975	CLNC DEL 121.975	POTOMAC CLNC DEL 126.9 (when tower closed)	UNICOM 122.95
------------------------	---	--	---------------------------	----------------------------	---	-------------------------



NE-3, 09 NOV 2017 to 07 DEC 2017

NE-3, 09 NOV 2017 to 07 DEC 2017



CATEGORY	A	B	C	D
LNAV MDA	720-1	417 (500-1)	720-1¼	417 (500-1¼)
CIRCLING	900-1	597 (600-1)	900-1½	1080-2½
			597 (600-1½)	777 (800-2½)

HIRL Rwy 5-23
MIRL Rwy 12-30
REIL Rws 5, 12, 23 and 30