

LOC/DME I-CHO 111.7 Chan 54	APP CRS 030°	Rwy Ldg 6801 TDZE 640 Apt Elev 640
--	------------------------	--

ILS or LOC RWY 3

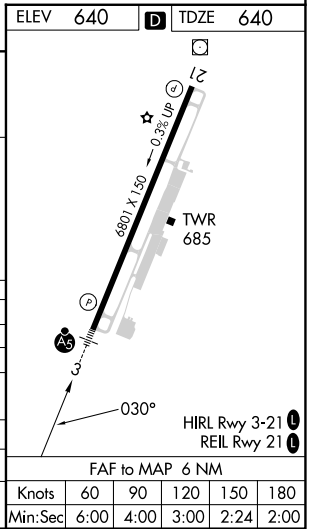
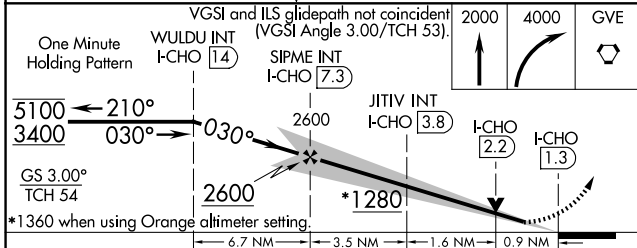
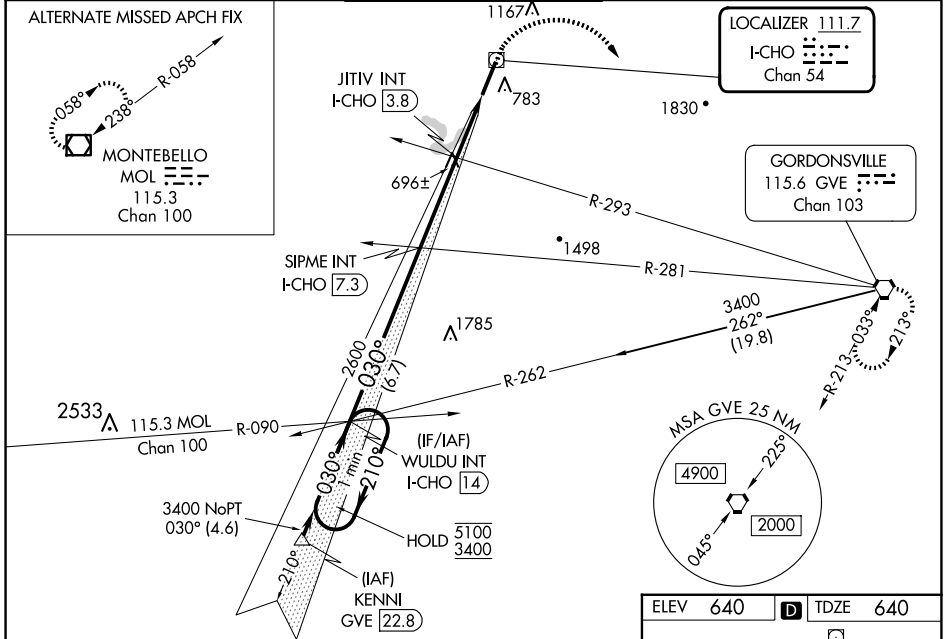
CHARLOTTESVILLE-ALBEMARLE (CHO)

▼ VDP NA when using Orange altimeter setting. When local altimeter setting not received, use Orange altimeter setting and increase S-ILS 3 DA to 911 and all MDA 80 feet;
▲ increase S-LOC 3 JITIV fix minimums Cats C/D, S-LOC 3 Cats C/D, Circling Cats C/D, and JITIV fix minimums Circling Cats C/D visibility 1/2 SM. For inop ALS when using Orange altimeter setting, increase S-ILS 3 all Cats visibility to 2/3 SM, S-LOC 3 Cats C/D visibility to 2 SM, and S-LOC 3 JITIV fix minimums Cats C/D visibility to 1 1/2 SM.



MISSED APPROACH:
Climb to 2000 then climbing right turn to 4000 direct GVE VORTAC and hold.

ATIS 118.425	POTOMAC APP CON 132.85 323.125	CHARLOTTESVILLE TOWER ★ 124.5 (CTAF) 338.275	GND CON 121.9 338.275	UNICOM 122.95
------------------------	--	--	---------------------------------	-------------------------



CATEGORY	A	B	C	D
S-ILS 3	840-1/2 200 (200-1/2)			
S-LOC 3	1280-1/2	640 (700-1/2)	1280-1 3/8	640 (700-1 3/8)
C CIRCLING	1280-1	640 (700-1)	1500-2 1/2 860 (900-2 1/2)	1500-2 3/4 860 (900-2 3/4)
JITIV FIX MINIMUMS (DUAL VOR RECEIVERS OR DME REQUIRED)				
S-LOC 3	980-1/2	340 (400-1/2)	980-5/8	340 (400-5/8)
C CIRCLING	1100-1	460 (500-1)	1500-2 1/2 860 (900-2 1/2)	1500-2 3/4 860 (900-2 3/4)

NE-3, 15 MAY 2025 to 12 JUN 2025

NE-3, 15 MAY 2025 to 12 JUN 2025