

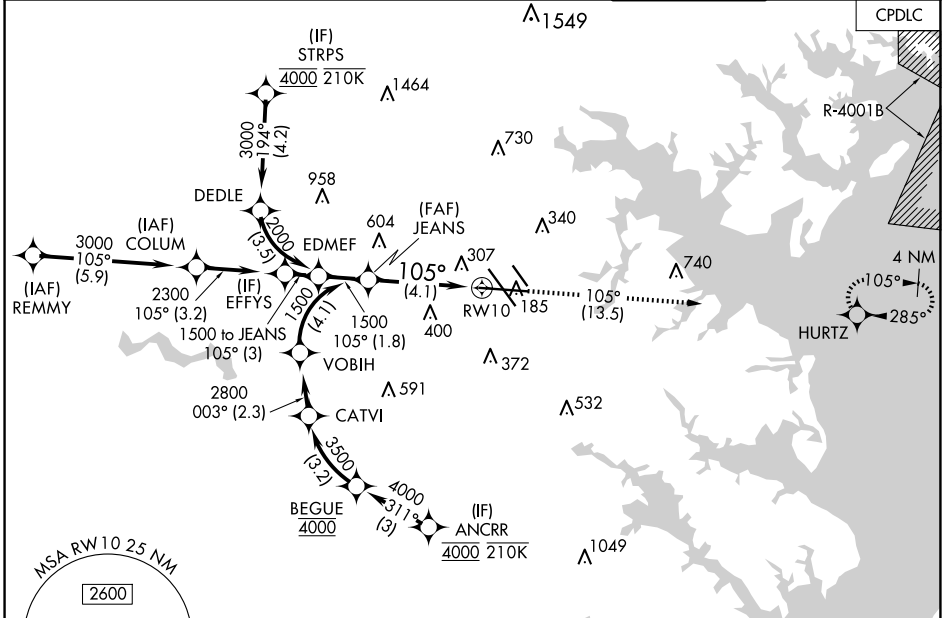
APP CRS	Rwy Idg	9953
105°	TDZE	143
	Apt Elev	143

RNAV (RNP) Z RWY 10

BALTIMORE/WASHINGTON INTL THURGOOD MARSHALL (BWI)

RNP AR APCH - GPS.		ALSF-2	MISSED APPROACH: Climb to 2500 on track 105° to HURTZ and hold.
<p>▼ For uncompensated Baro-VNAV systems, procedure NA below -11°C or above 54°C. For inop ALS, increase RNP 0.11 all Cats visibility to RVR 4500, increase RNP 0.30 all Cats visibility to 1 3/8 SM.</p>			

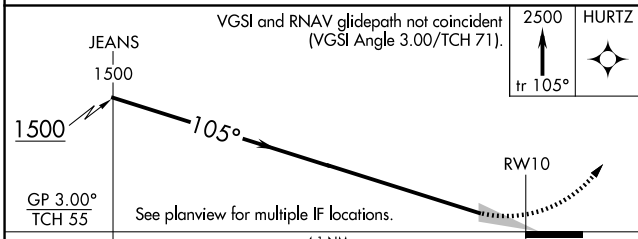
D-ATIS	POTOMAC APP CON	BALTIMORE TOWER	GND CON	CLNC DEL
115.1 127.8	119.0 282.275 124.55 317.425	119.4 257.8	121.9	118.05
	(020°-100°) 119.7 290.475 (131°-180°) (101°-130°) 128.7 307.9 (181°-019°)			



NE-3, 15 MAY 2025 to 12 JUN 2025

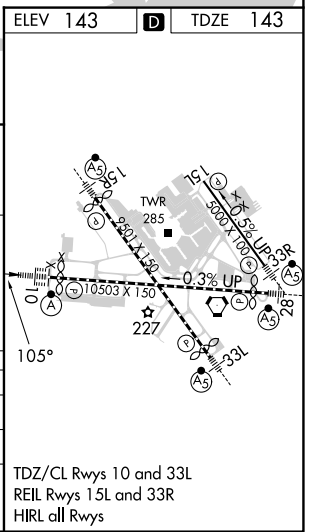
NE-3, 15 MAY 2025 to 12 JUN 2025

ELEV 143	D	TDZE 143
----------	----------	----------



CATEGORY	A	B	C	D
RNP 0.11 DA		444/24	301 (400-1/2)	
RNP 0.30 DA		628/50	485 (500-1)	

AUTHORIZATION REQUIRED



TDZ/CL Rwys 10 and 33L
REIL Rwys 15L and 33R
HIRL all Rwy's

RNAV (RNP) Z RWY 10