

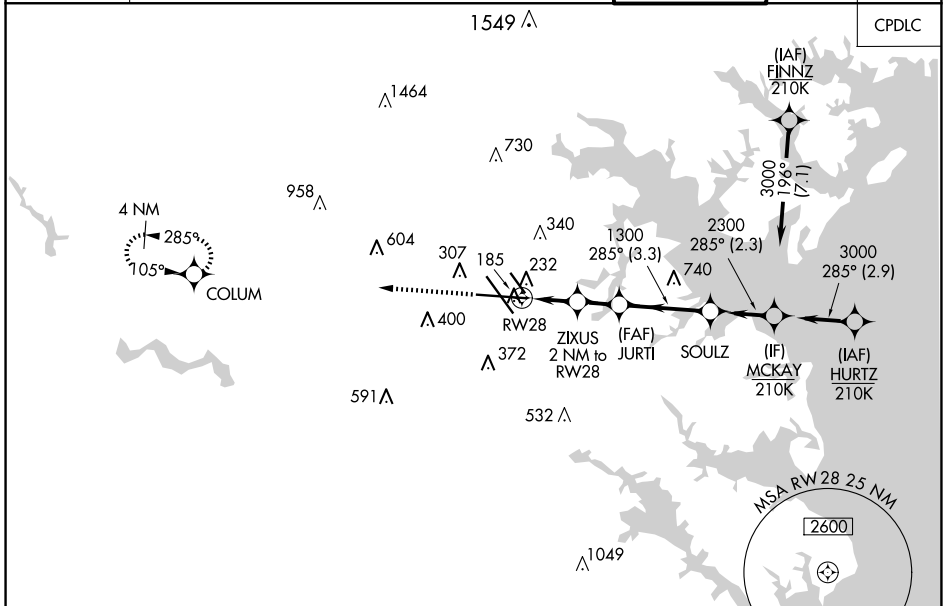
WAAS CH <b>48808</b> <b>W28A</b>	APP CRS <b>285°</b>	Rwy Idg TDZE Apt Elev	<b>9803</b> <b>143</b> <b>143</b>
--	------------------------	-----------------------------	---

# RNAV (GPS) Y RWY 28

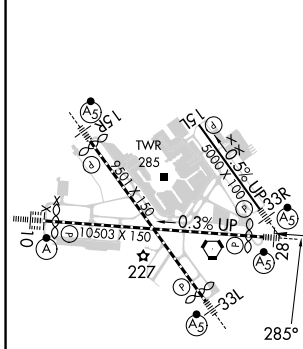
BALTIMORE/WASHINGTON INTL THURGOOD MARSHALL (BWI)

RNP APCH - GPS. ▼ For uncompensated Baro-VNAV systems, LNAV/VNAV NA below -11°C or above 54°C. For inop ALS, increase LNAV/VNAV all Cats visibility to RVR 4000 and LNAV Cats C and D visibility to RVR 5500. ▲ * RVR 1800 authorized with use of FD or AP or HUD to DA.	MALSR 	MISSED APPROACH: Climb to 2500 direct COLUM and hold.
--	-----------	--

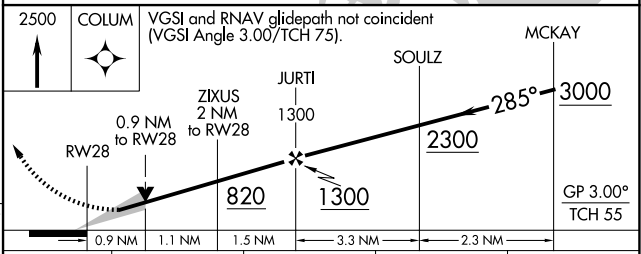
D-ATIS	POTOMAC APP CON (020°-100°) <b>119.7 290.475</b> (131°-180°) (101°-130°) <b>128.7 307.9</b> (181°-019°)	BALTIMORE TOWER	GND CON	CLNC DEL
<b>115.1 127.8</b>		<b>119.4 257.8</b>	<b>121.9</b>	<b>118.05</b>



ELEV 143	<b>D</b>	TDZE 143
----------	----------	----------



TDZ/CL Rws 10 and 33L  
 REIL Rws 15L and 33R  
 HIRL all Rws



CATEGORY	A	B	C	D
LPV DA *	343/24		200 (200-½)	
LNAV/VNAV DA	395/24		252 (300-½)	
LNAV MDA	500/24	357 (400-½)	500/30	357 (400-¾)
<b>C</b> CIRCLING	660-1	517 (600-1)	700-1½ 557 (600-1½)	880-2¼ 737 (800-2¼)

# RNAV (GPS) Y RWY 28

NE-3, 15 MAY 2025 to 12 JUN 2025

NE-3, 15 MAY 2025 to 12 JUN 2025