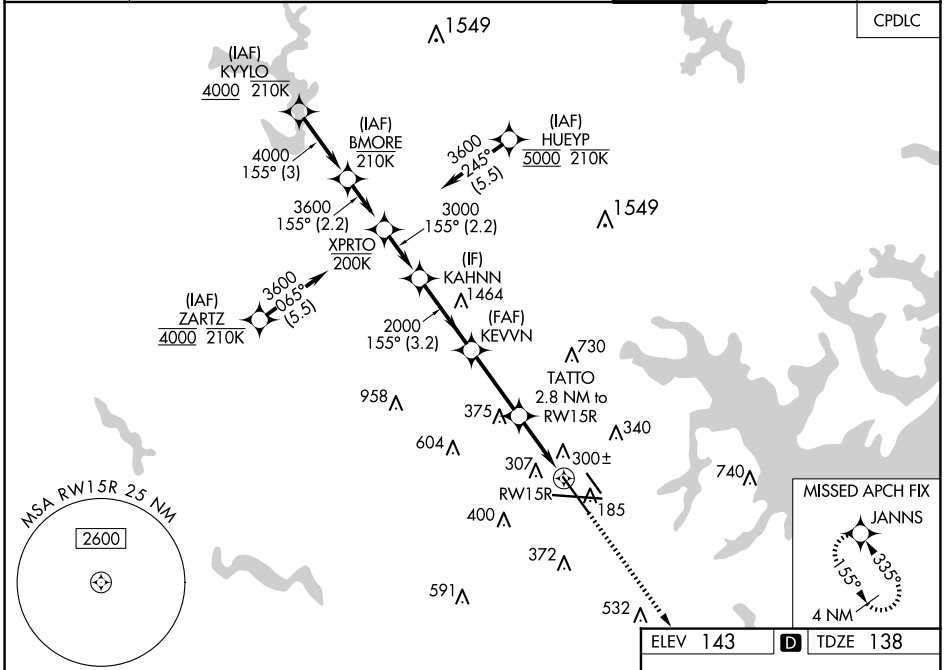


WAAS CH 66007 W15B	APP CRS 155°	Rwy Idg TDZE 138 Apt Elev 143	8301
--	------------------------	---	-------------

RNAV (GPS) Y RWY 15R

BALTIMORE/WASHINGTON INTL THURGOOD MARSHALL (BWI)

RNP APCH - GPS.		MALS R	MISSED APPROACH: Climb to 2500 direct JANNS and hold.	
<p>▼ For uncompensated Baro-VNAV systems, LNAV/VNAV NA below -11°C or above 54°C. ▲ Simultaneous approach authorized with Rwy 15L. For inop ALS, increase LNAV/VNAV all Cats visibility to RVR 6000. * RVR 1800 authorized with use of FD or AP or HUD to DA.</p>				
D-ATIS 115.1 127.8	POTOMAC APP CON 119.0 282.275 124.55 317.425	(020°-100°) 119.7 290.475 (101°-130°) 128.7 307.9	(131°-180°) 119.4 257.8	(181°-019°) BALTIMORE TOWER 119.4 257.8
			GND CON 121.9	CLNC DEL 118.05



<p>KAHNN VGSi and RNAV glidepath not coincident (VGSi Angle 3.00/TCH 73). KEVVN 2500 JANNS TATTO 2.8 NM to RW15R 1.1 NM to RW15R</p> <p>GP 3.00° TCH 56</p> <p>3000 155° 2000 1080</p> <p>3.2 NM 2.9 NM 1.7 NM 1.1</p>				
CATEGORY	A	B	C	D
LPV DA		*338/24	200 (200-½)	
LNAV/VNAV DA		557/40	419 (500-¾)	
LNAV MDA	560/24	422 (500-½)	560/40	422 (500-¾)
CIRCLING	640-1 497 (500-1)	660-1 517 (600-1)	700-1½ 557 (600-1½)	880-2¼ 737 (800-2¼)
<p>TDZ/CL Rws 10 and 33L REIL Rws 15L and 33R HIRL all Rws</p>				

RNAV (GPS) Y RWY 15R

NE-3, 15 MAY 2025 to 12 JUN 2025

NE-3, 15 MAY 2025 to 12 JUN 2025