

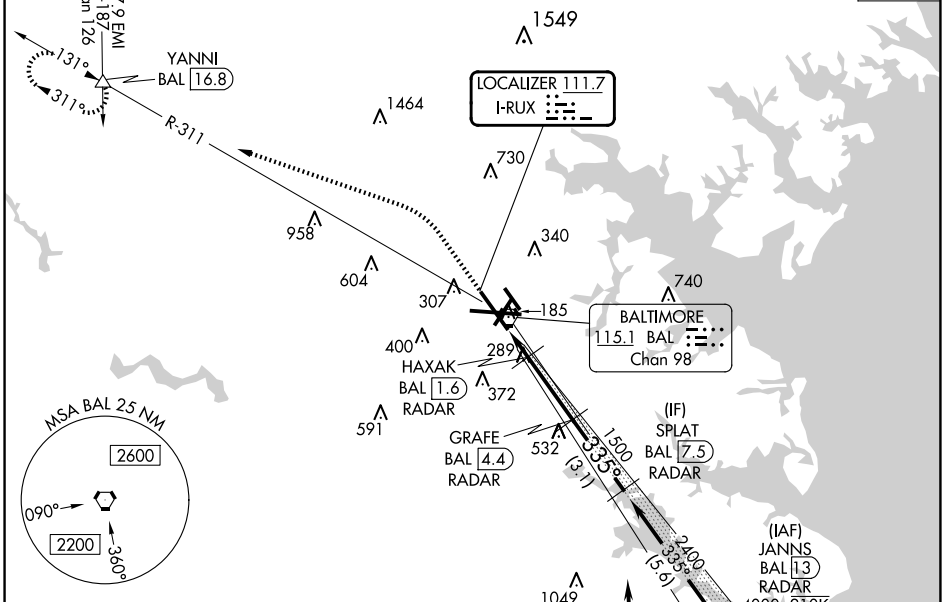
LOC I-RUX <b>111.7</b>	APP CRS <b>335°</b>	Rwy ldg TDZE Apt Elev	<b>8301</b> <b>143</b> <b>143</b>
---------------------------	------------------------	-----------------------------	---

BALTIMORE/  
WASHINGTON INTL THURGOOD MARSHALL (BWI)  
**ILS or LOC RWY 33L**

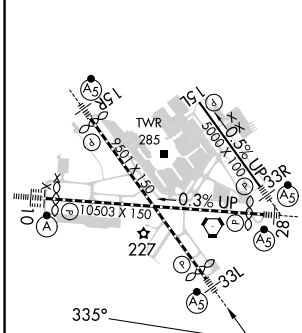
RNP APCH - GPS. From KOOLZ.  
RADAR required for procedure entry. DME or RADAR required.

Simultaneous approach authorized with ILS or LOC Rwy 33R. DME from BAL.  
VORTAC. DME use requires simultaneous reception of I-RUX and BAL DME.

D-ATIS <b>115.1 127.8</b>	POTOMAC APP CON (020°-100°) <b>119.0 282.275</b> (101°-130°) <b>124.55 317.425</b>	(131°-180°) <b>119.7 290.475</b> (181°-019°) <b>128.7 307.9</b>	BALTIMORE TOWER <b>119.4 257.8</b>	GND CON <b>121.9</b>	CLNC DEL <b>118.05</b>
------------------------------	--	--	---------------------------------------	-------------------------	---------------------------

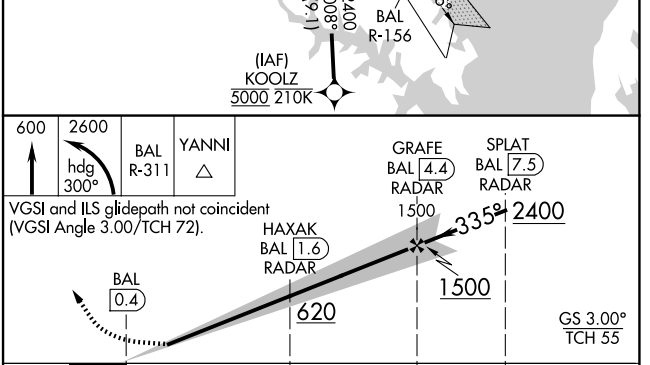


ELEV 143	<b>D</b>	TDZE 143
----------	----------	----------



FAF to MAP 4.1 NM

Knots	60	90	120	150	180
Min:Sec	4:06	2:44	2:03	1:38	1:22



CATEGORY	A	B	C	D
S-ILS 33L		343/18	200 (200-1/2)	
S-LOC 33L	540/24	397 (400-1/2)	540/35	397 (400-3/8)
	640-1	660-1	700-1 1/2	880-2 1/4
<b>C</b> CIRCLING	497 (500-1)	517 (600-1)	557 (600-1 1/2)	737 (800-2 1/4)

**ILS or LOC RWY 33L**

NE-3, 15 MAY 2025 to 12 JUN 2025

NE-3, 15 MAY 2025 to 12 JUN 2025