

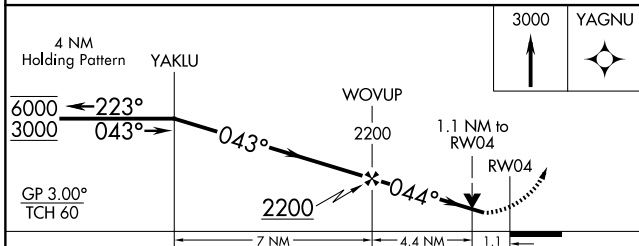
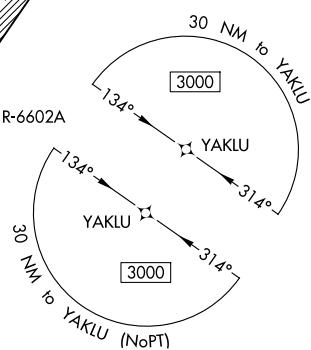
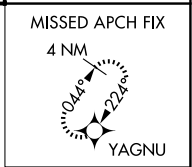
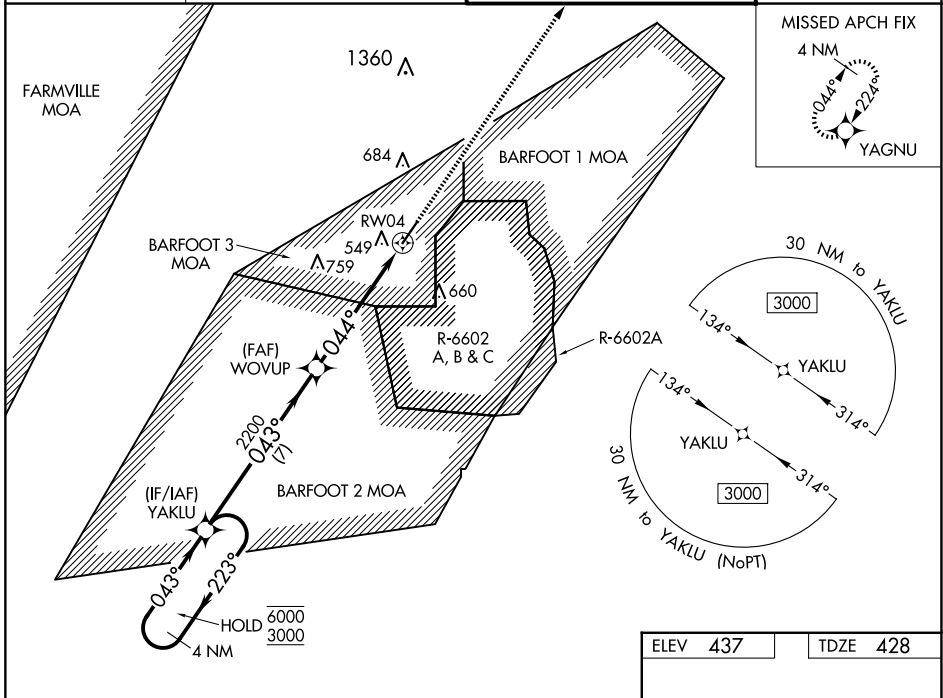
WAAS CH 42934 W04A	APP CRS 044°	Rwy Idg 5333 TDZE 428 Apt Elev 437
--	------------------------	---

RNAV (GPS) RWY 4

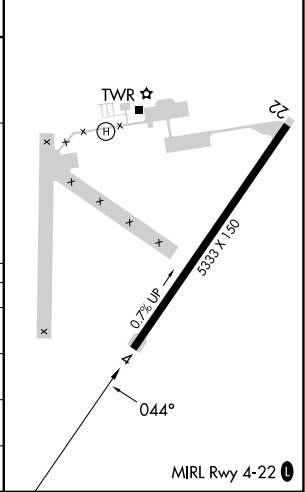
ALLAN C PERKINSON/BLACKSTONE AAF (BKT)

RNP APCH - GPS.	MISSED APPROACH: Climb to 3000 direct YAGNU and hold.
<p>▼ For uncompensated Baro-VNAV systems, LNAV/VNAV NA below -15°C or above 54°C.</p> <p>▲ Circling NA southeast of Rwy 4-22. Rwy 4 helicopter visibility reduction below 3/4 SM NA.</p>	

ATIS 119.225	WASHINGTON CENTER 118.75 377.1	BLACKSTONE TOWER ★ 134.7 (CTAF) 0 292.7	GND CON 127.625
------------------------	--	---	---------------------------



ELEV 437	TDZE 428
----------	----------



CATEGORY	A	B	C	D
LPV DA	717-1	289 (300-1)		NA
LNAV/VNAV DA	699-1	271 (300-1)		NA
LNAV MDA	800-1	372 (400-1)	800-1½ 372 (400-1½)	NA
CIRCLING	860-1 423 (500-1)	900-1 463 (500-1)	1000-1½ 563 (600-1½)	NA

NE-3, 15 MAY 2025 to 12 JUN 2025

NE-3, 15 MAY 2025 to 12 JUN 2025