

WAAS CH 78036 W02A	APP CRS 014°	Rwy Idg TDZE 163 Apt Elev 175
--	------------------------	---

RNAV (GPS) RWY 2

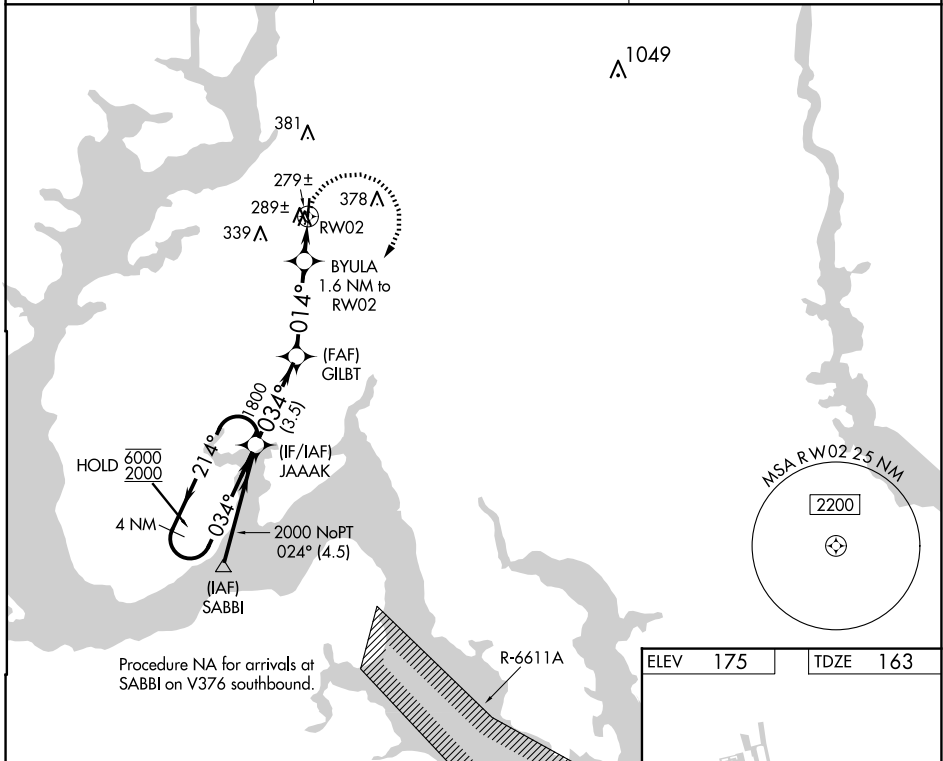
MARYLAND (2W5)

RNP APCH.

NA Circling Rwy 20 NA at night. Rwy 2 helicopter visibility reduction below 3/4 SM NA. Use Ronald Reagan Washington Ntl altimeter setting.

MISSED APPROACH: Climbing right turn to 2000 direct JAAAK and hold.

DCA ASOS 132.65	POTOMAC APP CON 124.7 338.2	UNICOM 122.7 (CTAF) 0
---------------------------	---------------------------------------	--

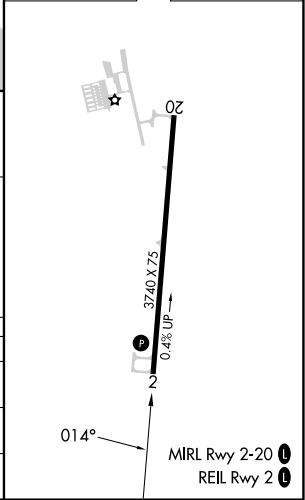
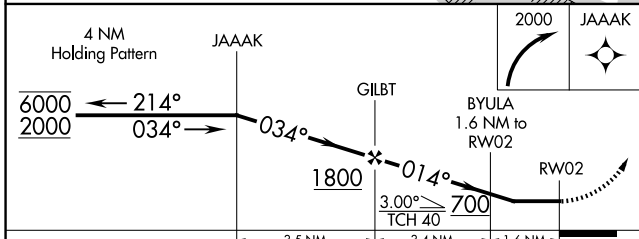


NE-3, 15 MAY 2025 to 12 JUN 2025

NE-3, 15 MAY 2025 to 12 JUN 2025

Procedure NA for arrivals at SABBI on V376 southbound.

ELEV	175	TDZE	163
------	-----	------	-----



CATEGORY	A	B	C	D
LP MDA	600-1	437 (500-1)		NA
LNAV MDA	620-1	457 (500-1)		NA
C CIRCLING	700-1	525 (600-1)		NA