

# RNAV (GPS) RWY 19

CAPE MAY COUNTY (WWD)

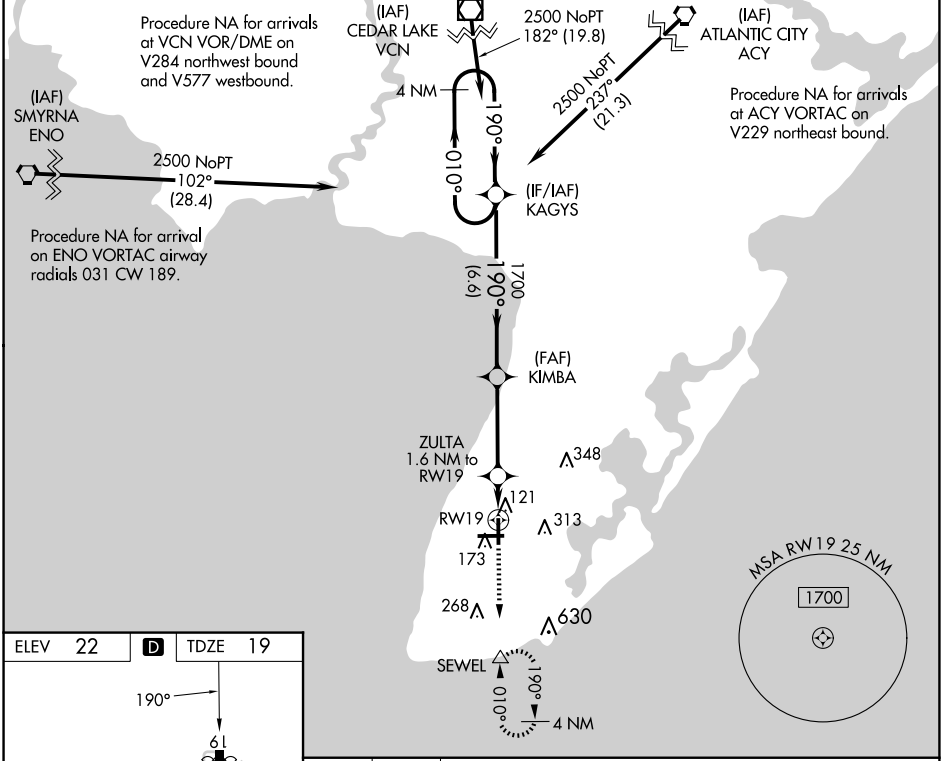
WAAS CH <b>82400</b> <b>W19A</b>	APP CRS <b>190°</b>	Rwy lgt <b>5036</b> TDZE <b>19</b> Apt Elev <b>22</b>
----------------------------------------	------------------------	-------------------------------------------------------------

RNP APCH.

**▼** For uncompensated Baro-VNAV systems, LNAV/VNAV NA below -8°C or above 54°C.  
**▲** Circling NA for Cats C and D NE of Rwy 19 and 28. Rwy 19 helicopter visibility reduction below 1 SM NA. Circling Rwy 1 NA at night.

MISSED APPROACH: Climb to 2500 direct SEWEL and hold, continue climb-in-hold to 2500.

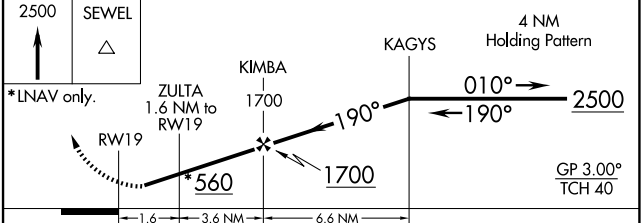
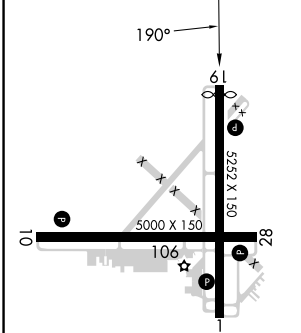
AWOS-3PT <b>118.275</b>	ATLANTIC CITY APP CON <b>124.6 327.125</b>	CLNC DEL <b>121.7</b>	UNICOM <b>122.7 (CTAF) 0</b>
----------------------------	-----------------------------------------------	--------------------------	---------------------------------



NE-2, 15 MAY 2025 to 12 JUN 2025

NE-2, 15 MAY 2025 to 12 JUN 2025

ELEV 22	<b>D</b>	TDZE 19
---------	----------	---------



CATEGORY	A	B	C	D
LPV DA		269-1	250 (300-1)	
LNAV/VNAV DA		392-1¼	373 (400-1¼)	
LNAV MDA		380-1	361 (400-1)	
<b>C</b> CIRCLING	480-1 458 (500-1)	620-1 598 (600-1)	620-1½ 598 (600-1½)	980-3 958 (1000-3)