

WAAS CH <b>99330</b> <b>W16A</b>	APP CRS <b>158°</b>	Rwy Idg TDZE Apt Elev	<b>4800</b> <b>213</b> <b>213</b>
--	------------------------	-----------------------------	---

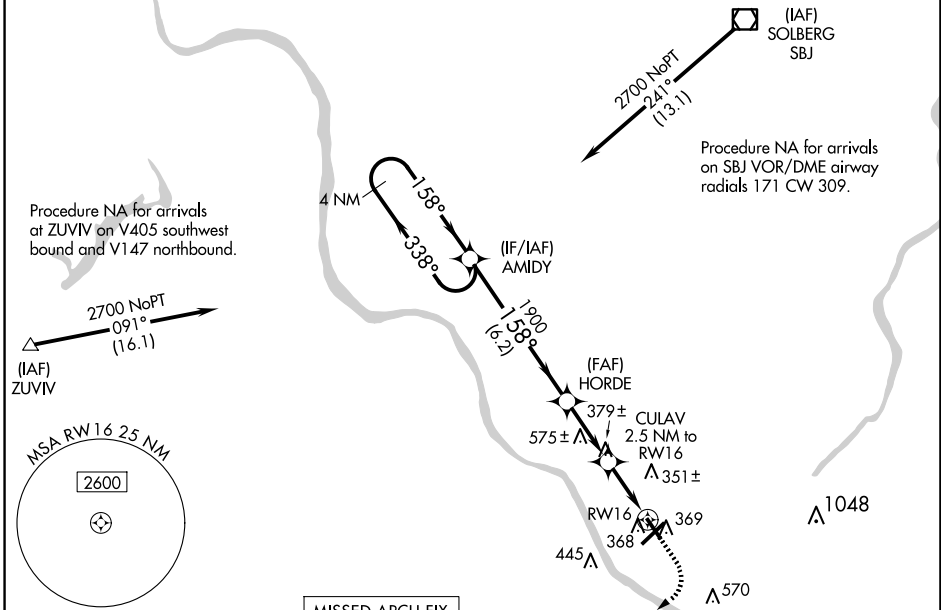
# RNAV (GPS) RWY 16

TRENTON MERCER (TTN)

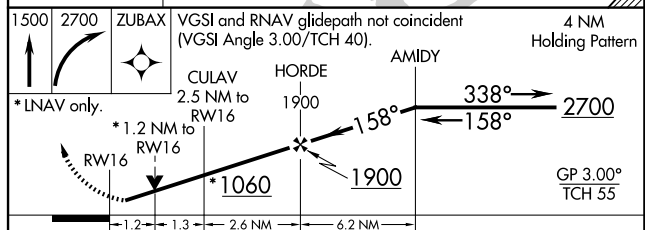
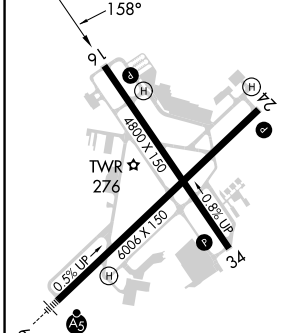
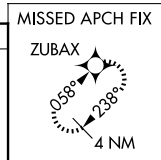
▼ Night Landing: Rwy 34 operational VGSI required, remain on or above VGSI glidepath until threshold. Baro-VNAV NA when using Northeast Philadelphia altimeter setting. For uncompensated Baro-VNAV systems, LNAV/VNAV NA below -1.5°C (5°F) or above 54°C (130°F). DME/DME RNP-0.3 NA.  
 ▲ Helicopter visibility reduction below 3/4 SM NA. When local altimeter setting not received use Northeast Philadelphia altimeter setting; increase LPV DA to 510 feet and all Cats visibility: 3/8 SM, LNAV/VNAV DA to 576 feet; increase all MDA 60 feet and LNAV Cat C/D visibility 3/8 SM and Circling Cat C visibility 1/2 SM.

MISSED APPROACH:  
Climb to 1500 then climbing right turn to 2700 direct ZUBAX and hold.

ATIS <b>126.775</b>	PHILADELPHIA APP CON <b>123.8</b>	APP CON <b>291.7</b>	TRENTON TOWER ★ <b>120.7</b> (CTAF) <b>0 257.8</b>	GND CON <b>121.9</b> <b>257.8</b>	CLNC DEL <b>121.9</b> <b>257.8</b>	UNICOM <b>122.95</b>
------------------------	--------------------------------------	-------------------------	---	--------------------------------------	---------------------------------------	-------------------------



ELEV <b>213</b>	<b>D</b>	TDZE <b>213</b>
-----------------	----------	-----------------



CATEGORY	A	B	C	D
LPV DA	463-3/4 250 (300-3/4)			
LNAV/VNAV DA	529-1 316 (400-1)			
LNAV MDA	640-1	427 (500-1)	640-1 1/4	427 (500-1 1/4)
CIRCLING	680-1 467 (500-1)		760-1 1/2	960-2 1/2
			547 (600-1 1/2)	747 (800-2 1/2)

HIRL Rwy 6-24 and 16-34  
 REIL Rwy 16, 24 and 34

NE-2, 15 MAY 2025 to 12 JUN 2025

NE-2, 15 MAY 2025 to 12 JUN 2025