

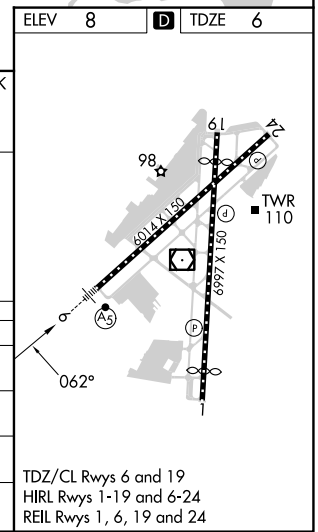
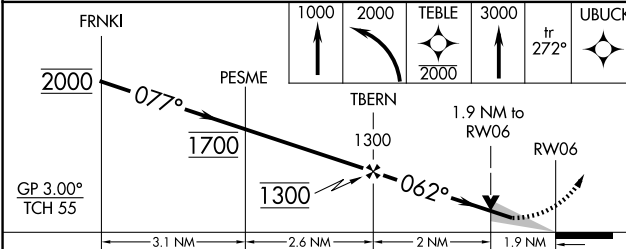
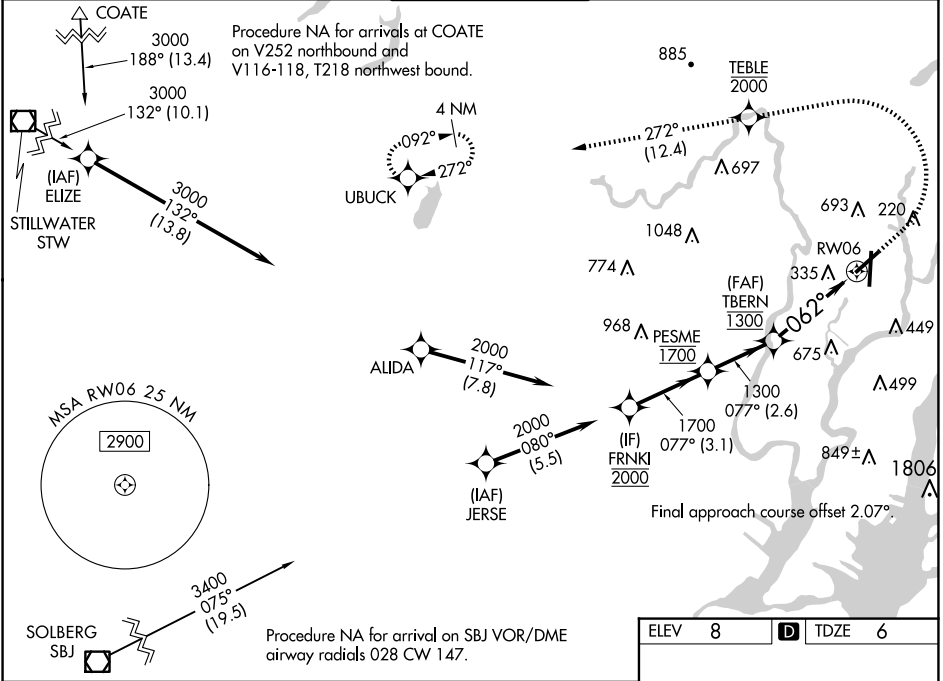
WAAS CH 65634 W06B	APP CRS 062°	Rwy Idg TDZE Apt Elev	6014 6 8
--	------------------------	-----------------------------	-------------------------------------

RNAV (GPS) X RWY 6

TETERBORO (TEB)

RNP APCH - GPS. RADAR required.	MALSR	MISSED APPROACH: Climb to 1000, then climbing left turn to 2000 direct TEBLE, cross TEBLE at or below 2000, then climb to 3000 on track 272° to UBUCK and hold.
▼ Circling NA for Cats B, C and D northwest of Rwy 6 and 19. For uncompensated Baro-VNAV systems, LNAV/VNAV NA below -13°C or above 54°C. For inop ALS, increase LPV all Cats visibility to 1 $\frac{1}{8}$ SM, and LNAV/VNAV all Cats visibility to 1 $\frac{1}{8}$ SM.	AS	

D-ATIS 114.2 132.85	NEWARK APP CON 127.6 379.9	TETERBORO TOWER 119.5	GND CON 121.9	CLNC DEL 128.05	CPDLC
-------------------------------	--------------------------------------	---------------------------------	-------------------------	---------------------------	-------



CATEGORY	A	B	C	D
LPV DA		459/45	453 (500- $\frac{7}{8}$)	
LNAV/VNAV DA		672-1 $\frac{1}{2}$	666 (700-1 $\frac{1}{2}$)	
LNAV MDA	660/24	654 (700- $\frac{1}{2}$)	660-1 $\frac{3}{8}$	654 (700-1 $\frac{3}{8}$)
CIRCLING	760-1	752 (800-1)	820-2 $\frac{1}{2}$ 812 (900-2 $\frac{1}{2}$)	1040-3 1032 (1100-3)