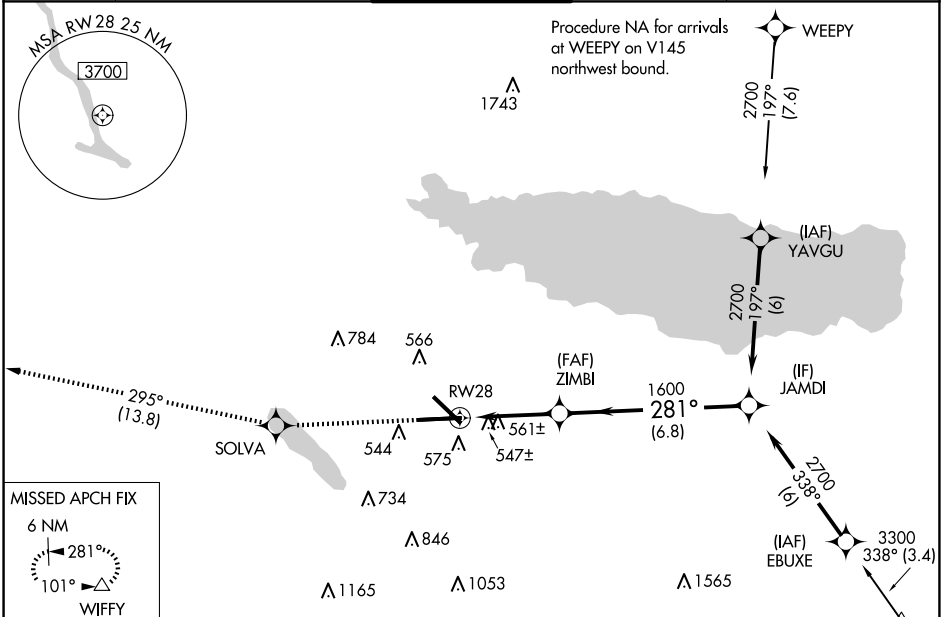


WAAS CH 45517 W28A	APP CRS 281°	Rwy Idg TDZE Apt Elev	9013 413 421
--	------------------------	-----------------------------	---

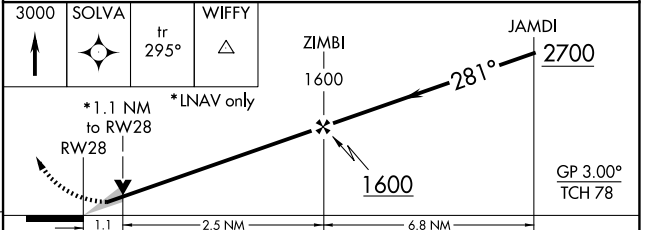
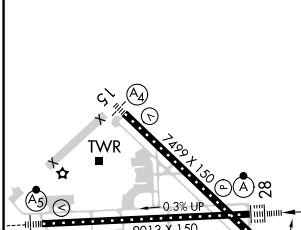
RNAV (GPS) Z RWY 28

SYRACUSE HANCOCK INTL (SYR)

<p>▽ For uncompensated Baro-VNAV systems, LNAV/VNAV NA below -21°C (-6°F) or above 54°C (130°F). DME/DME RNP-0.3 NA. For inop ALSF-2, increase LNAV Cats C/D visibility to 1½ mile.</p>		<p>ALSF-2</p>	<p>MISSED APPROACH: Climb to 3000 direct SOLVA and on track 295° to WIFFY and hold.</p>
<p>ATIS 124.225</p>	<p>SYRACUSE APP CON 126.125 269.125</p>	<p>SYRACUSE TOWER 120.3 239.0</p>	<p>GND CON 121.7 348.6</p>
		<p>CLNC DEL 125.05 257.775</p>	



ELEV 421	D	TDZE 413
-----------------	----------	-----------------



CATEGORY	A	B	C	D
LPV DA		613/18	200 (200-½)	
LNAV/VNAV DA		850/50	437 (500-1)	
LNAV MDA	820/24	407 (400-½)	820/40	407 (400-¾)
CIRCLING	900-1 479 (500-1)	920-1 499 (500-1)	1020-1½ 599 (600-1½)	1180-2½ 759 (800-2½)

TDZ/CL Rwy 28
HIRL Rwy 10-28 and 15-33

NE-2, 15 MAY 2025 to 12 JUN 2025

NE-2, 15 MAY 2025 to 12 JUN 2025