

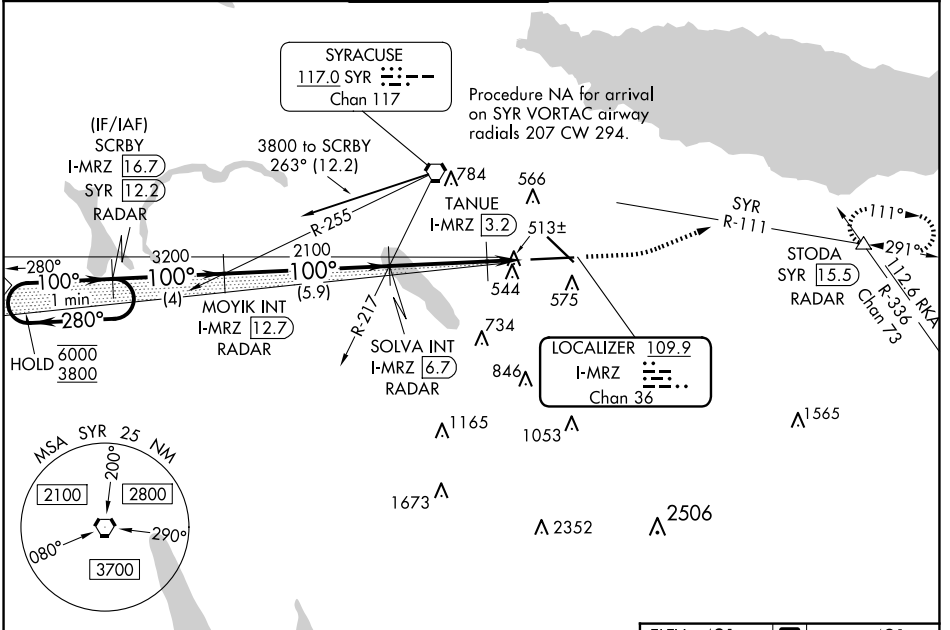
LOC/DME I-MRZ <b>109.9</b> Chan 36	APP CRS <b>100°</b>	Rwy ldg TDZE Apt Elev	<b>9013</b> <b>421</b> <b>421</b>
--	------------------------	-----------------------------	---

# ILS or LOC RWY 10

SYRACUSE HANCOCK INTL (SYR)

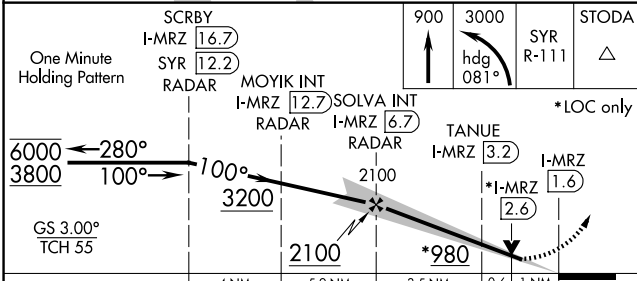
DME or RADAR required.		MALSR 	MISSED APPROACH: Climb to 900 then climbing left turn to 3000 on heading 081° and on SYR VORTAC R-111 to STODA INT/ SYR VORTAC 15.5 DME/RADAR and hold.
▼ TANUE fix minimums, for inoperative ALS, increase S-LOC 10 ▲ Cats C and D visibility to RVR 5500. **RVR 1800 authorized with use of FD or AP or HUD to DA.			

ATIS <b>124.225</b>	SYRACUSE APP CON <b>126.125 269.125</b>	SYRACUSE TOWER <b>120.3 239.0</b>	GND CON <b>121.7 348.6</b>	CLNC DEL <b>125.05 257.775</b>
------------------------	--	--------------------------------------	-------------------------------	-----------------------------------



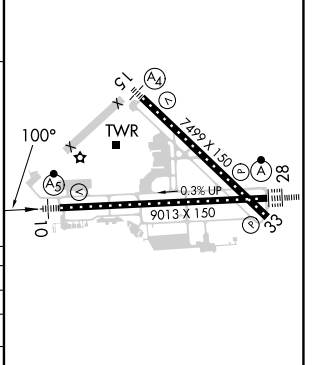
NE-2, 15 MAY 2025 to 12 JUN 2025

NE-2, 15 MAY 2025 to 12 JUN 2025



ELEV 421	<b>D</b> TDZE 421
----------	-------------------

CATEGORY	A	B	C	D
S-ILS 10**	621/24 200 (200-1/2)			
S-LOC 10	980/24	559 (600-1/2)	980/60	559 (600-1 1/4)
<b>C</b> CIRCLING	980-1	559 (600-1)	1020-1 1/8 599 (600-1 1/2)	1180-2 1/2 759 (800-2 1/2)
TANUE FIX MINIMUMS (DME REQUIRED)				
S-LOC 10	780/24	359 (400-1/2)	780/30	359 (400-3/4)
<b>C</b> CIRCLING	900-1 479 (500-1)	920-1 499 (500-1)	1020-1 1/2 599 (600-1 1/2)	1180-2 1/2 759 (800-2 1/2)



TDZ/CL Rwy 28					
HIRL Rwy 10-28 and 15-33					
FAF to MAP 5.1 NM					
Knots	60	90	120	150	180
Min:Sec	5:06	3:24	2:33	2:02	1:42