

# RNAV (GPS) RWY 12

SOMERSET (SMQ)

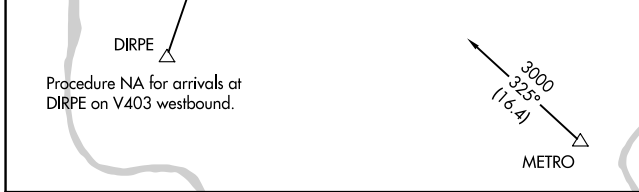
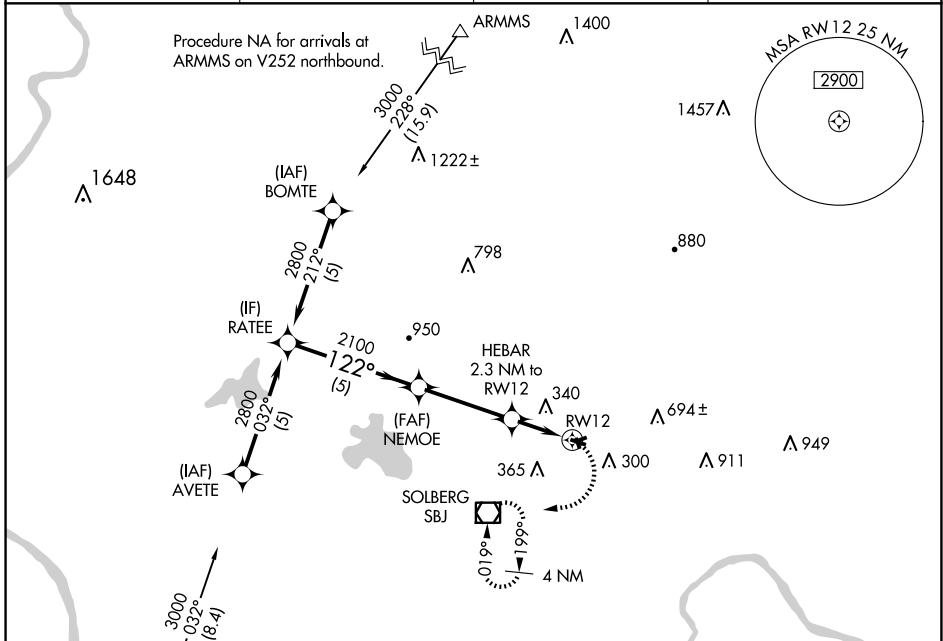
APP CRS	Rwy Idg	<b>2739</b>
<b>122°</b>	TDZE	<b>104</b>
	Apt Elev	<b>106</b>

RNP APCH - GPS.

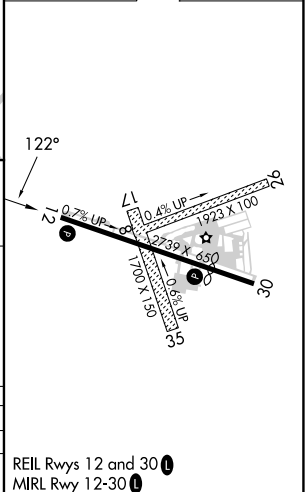
**▼** Rwy 12 helicopter visibility reduction below ¼ SM NA.  
**▲** Circling Rwy 8, 17, 26, 30 and 35 NA at night.

MISSED APPROACH: Climbing right turn to 2500 direct SBJ VOR/DME and hold, continue climb-in-hold to 2500.

ASOS <b>120.6</b>	NEWARK APP CON <b>132.8 379.9</b>	UNICOM <b>123.0 (CTAF)</b>	<b>118.325</b> <b>0</b>
----------------------	--------------------------------------	-------------------------------	-------------------------



ELEV 106	TDZE 104
----------	----------



	5 NM		3.5 NM		0.6 NM		1.6 NM	
CATEGORY	A		B		C		D	
LNVA MDA	640-1		536 (600-1)		NA		NA	
<b>☑</b> CIRCLING	640-1		960-1¼		NA		NA	
	534 (600-1)		854 (900-1¼)					

REIL Rwy 12 and 30 **0**  
 MRL Rwy 12-30 **0**

NE-2, 15 MAY 2025 to 12 JUN 2025

NE-2, 15 MAY 2025 to 12 JUN 2025