

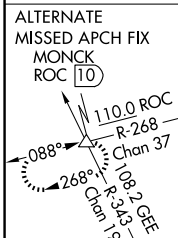
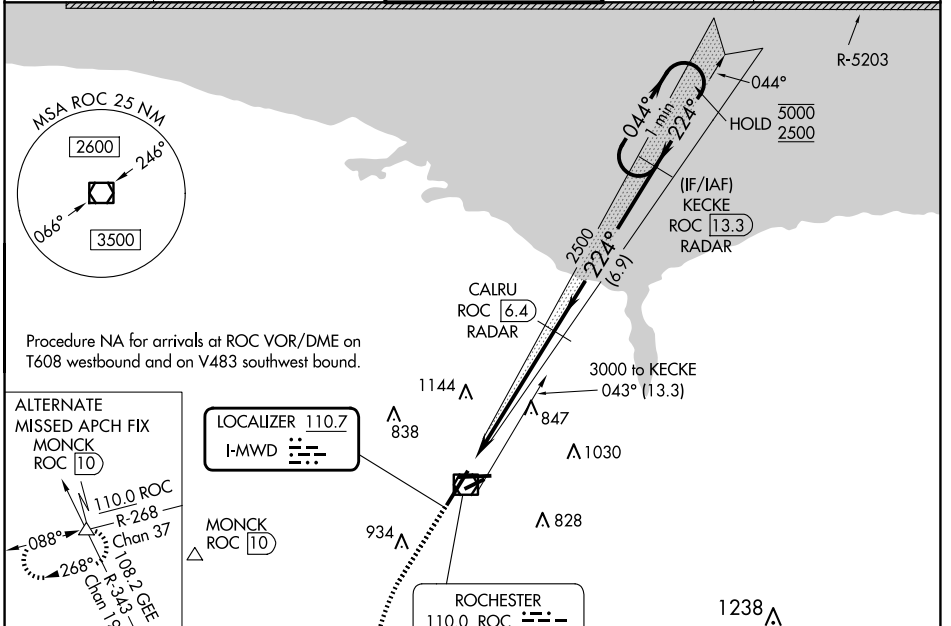
LOC I-MWD 110.7	APP CRS 224°	Rwy Idg 8001
		TDZE 559
		Apt Elev 559

ILS or LOC RWY 22

FREDERICK DOUGLASS/GREATER ROCHESTER INTL (ROC)

DME or RADAR required.		MALSR 	MISSED APPROACH: Climb to 1000 then climbing left turn to 4000 direct GEE VOR/DME and hold.	
⚠ When R-5203 active hold in lieu NA. DME from ROC VOR/DME. ⚠ DME use requires simultaneous reception of I-MWD and ROC DME. * RVR 1800 authorized with use of FD or AP or HUD to DA.				

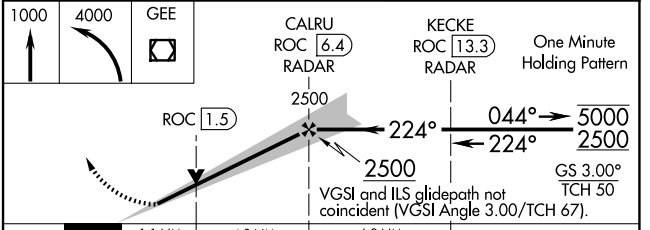
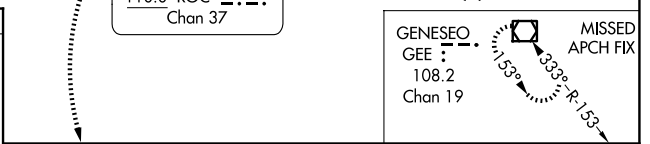
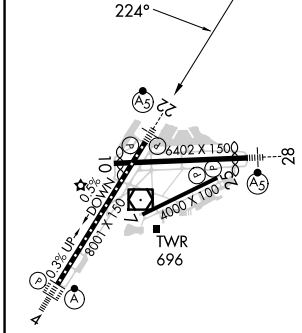
ATIS 124.825	ROCHESTER APP CON 119.55 269.6	ROCHESTER TOWER 118.3 254.3	GND CON 121.7	CLNC DEL 118.8 343.65
------------------------	--	---------------------------------------	-------------------------	---------------------------------



LOCALIZER 110.7
I-MWD

MONCK ROC 10

ELEV 559	D	TDZE 559
----------	----------	----------



FAF to MAP 5.9 NM					
Knots	60	90	120	150	180
Min:Sec	5:54	3:56	2:57	2:22	1:58
CATEGORY	A	B	C	D	
S-ILS 22 *	759/24 200 (200-½)				
S-LOC 22	980/24	421 (500-½)	980/40	421 (500-¾)	
CIRCLING	1060-1	501 (600-1)	1460-2¾ 901 (1000-2¾)	1460-3 901 (1000-3)	

NE-2, 15 MAY 2025 to 12 JUN 2025

NE-2, 15 MAY 2025 to 12 JUN 2025