

VOR/DME H ^{UO}	APP CRS	Rwy Idg	3358
116.1	039°	TDZE	548
Chan 108		Apt Elev	548

VOR/DME or GPS RWY 5

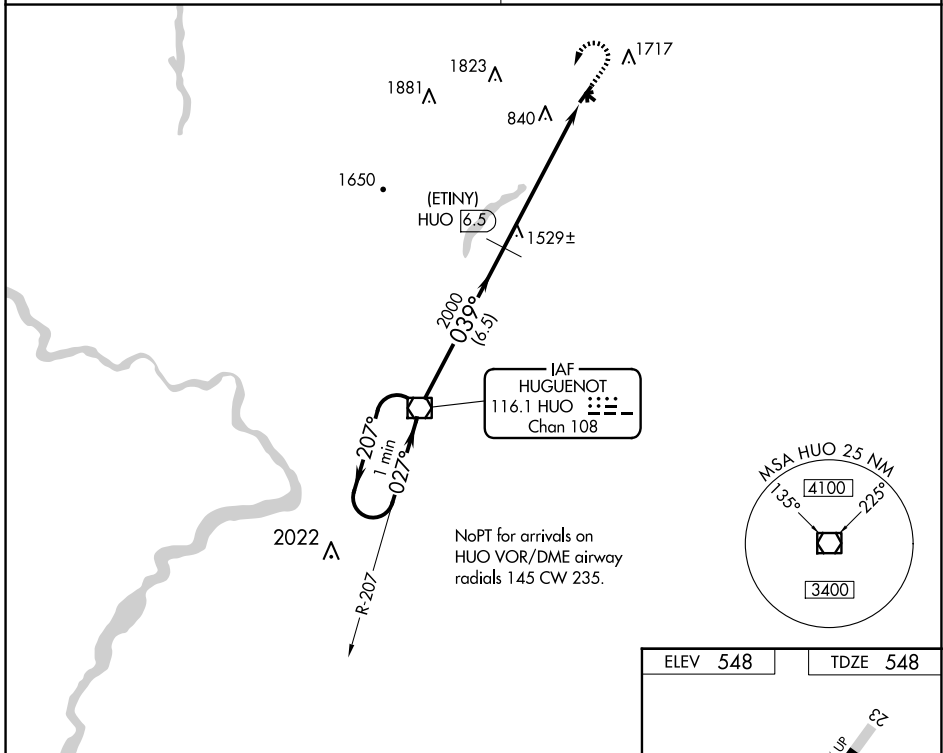
WURTSBORO/SULLIVAN COUNTY (N82)

▼ Obtain local altimeter setting on CTAF, when not received, procedure NA. Procedure not authorized at night. Circling Cat B/C NA north of Rwy 9/27. Helicopter visibility reduction below 1 SM NA.

MISSED APPROACH: Climb to 2300 then climbing left turn to 3500 direct H^{UO} VOR/DME and hold.

NEW YORK APP CON
132.75 363.1

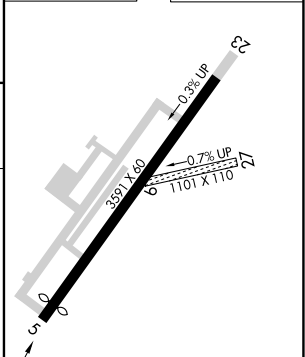
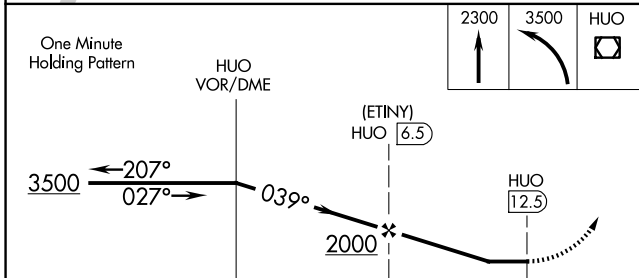
UNICOM
122.8 (CTAF)



NE-2, 15 MAY 2025 to 12 JUN 2025

NE-2, 15 MAY 2025 to 12 JUN 2025

ELEV 548	TDZE 548
----------	----------



CATEGORY	A	B	C	D
S-5	1880-1¼ 1332 (1400-1¼)	1880-1½ 1332 (1400-1½)	1880-3 1332 (1400-3)	NA
CIRCLING	1880-1¼ 1332 (1400-1¼)	1880-1½ 1332 (1400-1½)	2020-3 1472 (1500-3)	NA