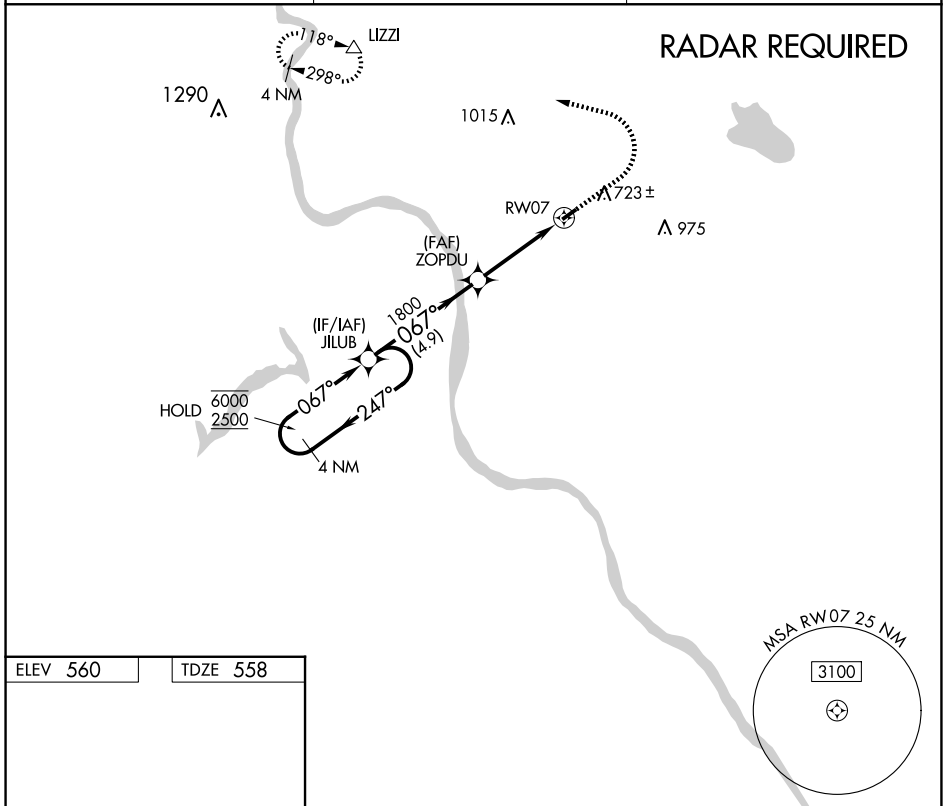


APP CRS	Rwy Idg	2900
067°	TDZE	558
	Apt Elev	560

RNAV (GPS) RWY 7

SKY MANOR (N4φ)

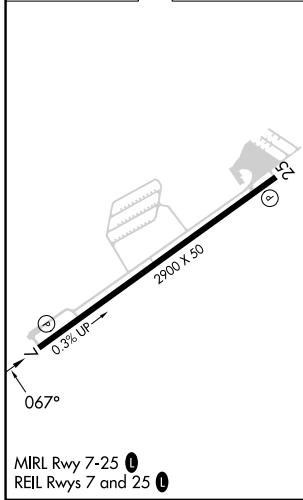
RNP APCH	Procedure NA at night. When local altimeter setting not received, use Lehigh Valley Intl altimeter setting. Rwy 7 helicopter visibility reduction below 1 SM NA.	MISSED APPROACH: Climb to 1100 then climbing left turn to 3000 direct IZZI and hold.
AWOS-3	ALLENTOWN APP CON	UNICOM
121.725	119.65 124.45 351.8	122.975 (CTAF) 0



NE-2, 15 MAY 2025 to 12 JUN 2025

NE-2, 15 MAY 2025 to 12 JUN 2025

ELEV 560	TDZE 558
----------	----------



Visual Segment - Obstacles.				1100	3000	LIZZI	
4 NM Holding Pattern				↑	↶	△	
6000 ← 247°							
2500 → 067°							
ZOPDU							
1800							
RWY 7							
4.9 NM				3.8 NM			
CATEGORY	A	B	C	D			
LNAV MDA	1080-1 522 (600-1)	NA					
CIRCLING	1140-1 580 (600-1)	NA					