

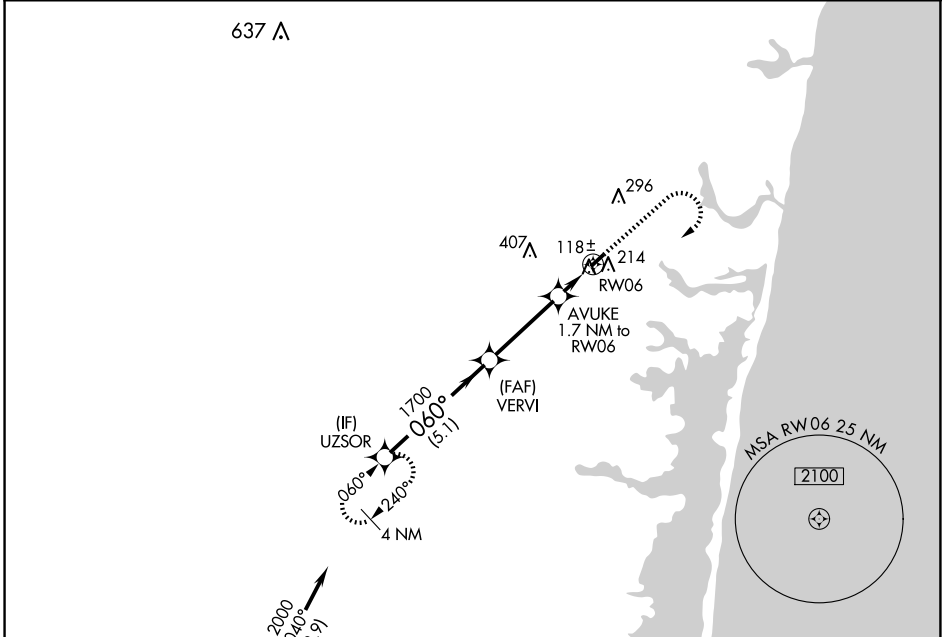
WAAS CH 49038 W06A	APP CRS 060°	Rwy Idg TDZE Apt Elev	2726 41 42
--	------------------------	-----------------------------	---------------------------------------

RNAV (GPS) RWY 6

LAKEWOOD (N12)

RNP APCH - GPS.	MISSED APPROACH: Climb to 1000 then climbing right turn to 2000 direct UZSOR and hold.
<p>▼ Circling Rwy 24 NA at night.</p> <p>▲ NA Rwy 6 helicopter visibility reduction below 3/4 SM NA.</p>	

AWOS-AV 122.8	MC GUIRE APP CON 126.475 363.8	GCO 121.725	UNICOM 122.8 (CTAF)
-------------------------	--	-----------------------	-------------------------------

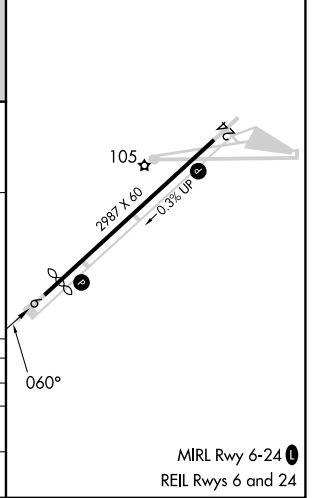
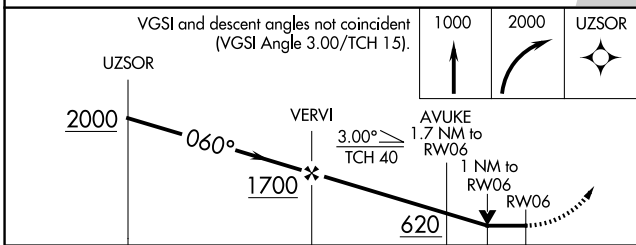


NE-2, 15 MAY 2025 to 12 JUN 2025

NE-2, 15 MAY 2025 to 12 JUN 2025

Procedure NA for arrival on CYN VORTAC airway radials 046 CW 100.

ELEV 42	TDZE 41
---------	---------



CATEGORY	A	B	C	D
LP MDA	380-1	339 (400-1)		NA
LNAV MDA	580-1	539 (600-1)		NA
◻ CIRCLING	580-1 538 (600-1)	620-1 578 (600-1)		NA