

LOC/DME I-MSV <b>109.1</b> Chan <b>28</b>	APP CRS <b>155°</b>	Rwy Ldg <b>5900</b> TDZE <b>1403</b> Apt Elev <b>1403</b>
---	------------------------	---

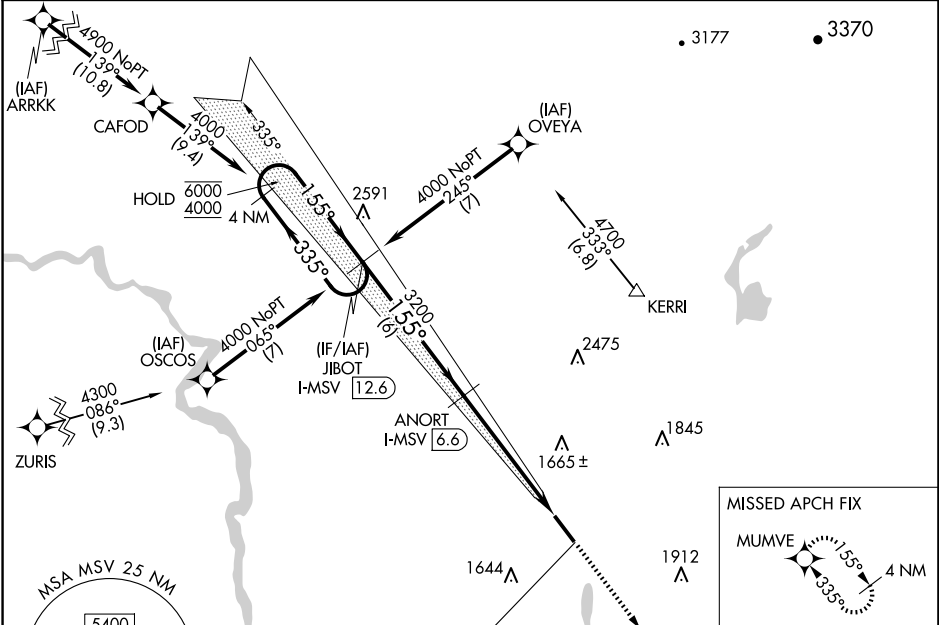
**ILS or LOC RWY 15**  
SULLIVAN COUNTY INTL (MSV)

RNP APCH - GPS.

**⚠** VDP NA when using New York Stewart Intl altimeter setting. When local altimeter setting not received, use New York Stewart Intl altimeter setting; increase S-ILS 15 DA to 1858 feet and all visibilities 3/4 SM; increase all MDAs 220 feet and S-LOC 15 visibility Cat B, C and D 7/8 SM, and Circling Cat B, C and D visibilities 3/4 SM.

MISSED APPROACH: Climb to 3300 direct MUMVE and hold.

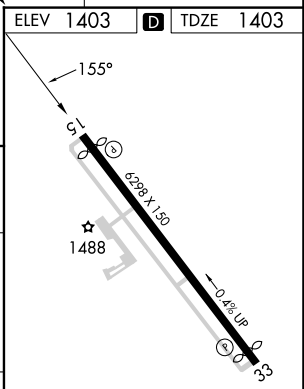
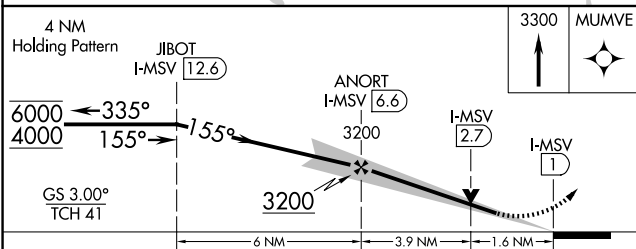
AWOS-3PT <b>124.725</b>	NEW YORK APP CON <b>132.75 363.1</b>	CLNC DEL <b>121.6</b>	UNICOM <b>122.8 (CTAF) 0</b>
----------------------------	---	--------------------------	---------------------------------



NE-2, 15 MAY 2025 to 12 JUN 2025

NE-2, 15 MAY 2025 to 12 JUN 2025

ELEV 1403	<b>D</b> TDZE 1403
LOCALIZER 109.1 I-MSV Chan 28	



CATEGORY	A	B	C	D
S-ILS 15		1653-3/4	250 (300-3/4)	
S-LOC 15	1960-1 557 (600-1)		1960-1 3/4 557 (600-1 3/4)	
<b>C</b> CIRCLING	1960-1 557 (600-1)		2020-1 3/4 617 (700-1 3/4)	2180-2 1/2 777 (800-2 1/2)

REIL Rwy 15 and 33 **0**  
HIRL Rwy 15-33 **0**

FAF to MAP 5.5 NM

Knots	60	90	120	150	180
Min:Sec	5:30	3:40	2:45	2:12	1:50