

APP CRS <b>229°</b>	Rwy Idg <b>5998</b>
	TDZE <b>183</b>
	Apt Elev <b>187</b>

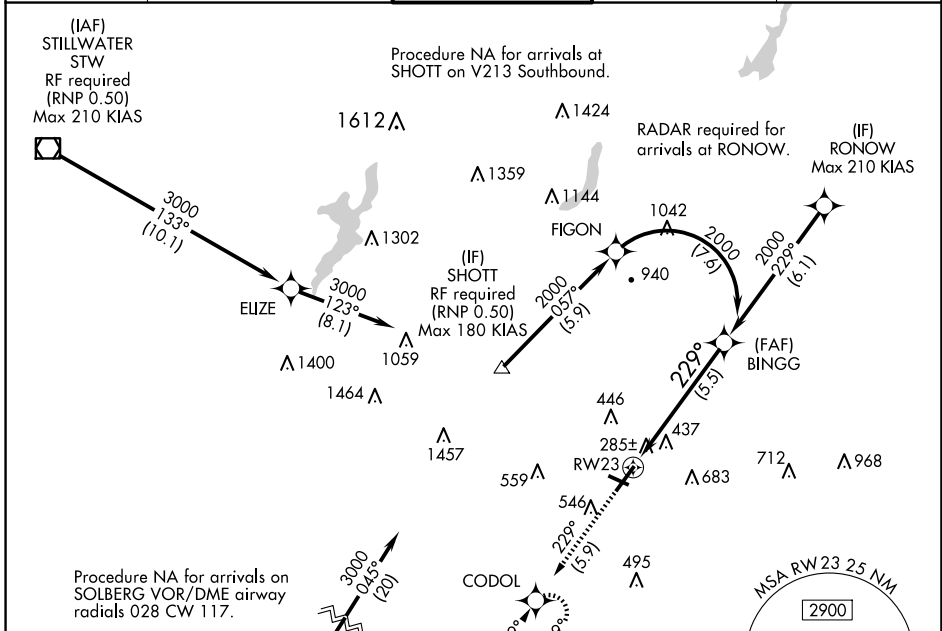
# RNAV (RNP) Y RWY 23

MORRISTOWN MUNI (MMU)

For uncompensated Baro-VNAV systems, procedure NA below -15°C (5°F) or above 48°C (118°F). When local altimeter setting not received, procedure NA. GPS required. For inoperative MALSRL, increase RNP 0.11 all Cats visibility to 1¼ mile and RNP 0.30 all Cats visibility to 2 miles. Visibility reduction by helicopters NA.

MALSRL MISSED APPROACH: Climb to 2000 on track 229° to CODOL and hold.

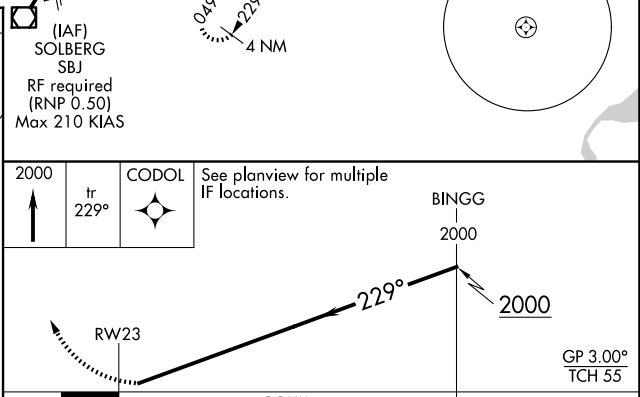
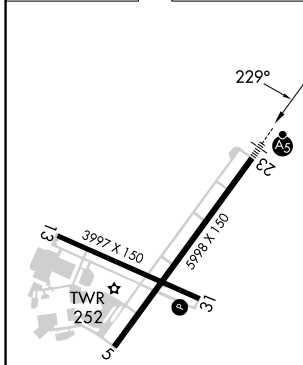
ATIS <b>124.25</b>	NEWARK APP CON <b>127.6 379.9</b>	MORRISTOWN TOWER* <b>118.1 (CTAF) 353.9</b>	GND CON <b>134.2</b>	CLNC DEL <b>128.6</b>
-----------------------	--------------------------------------	--	-------------------------	--------------------------



NE-2, 15 MAY 2025 to 12 JUN 2025

NE-2, 15 MAY 2025 to 12 JUN 2025

ELEV 187	TDZE 183
----------	----------



CATEGORY	A	B	C	D
RNP 0.11 DA		553-¾	370 (400-¾)	
RNP 0.30 DA		788-1½	605 (700-1½)	

**AUTHORIZATION REQUIRED**