

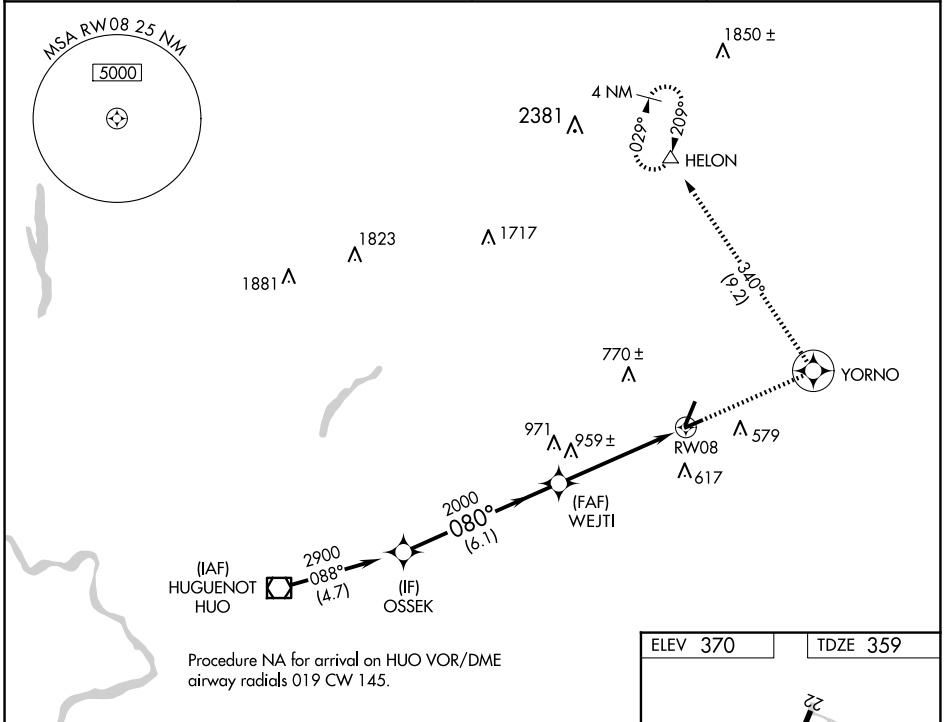
APP CRS <b>080°</b>	Rwy Idg <b>3664</b>
	TDZE <b>359</b>
	Apt Elev <b>370</b>

# RNAV (GPS) RWY 8

ORANGE COUNTY (MGJ)

RNP APCH - GPS.	MISSED APPROACH: Climb to 5300 direct YORNO and left turn on track 340° to HELON and hold.
<p><b>▼</b> Rwy 8 helicopter visibility reduction below 1 SM NA. Straight-in Rwy 8 NA at night, Circling Rwy 8, 22, 26 NA at night.</p> <p><b>▲</b></p>	

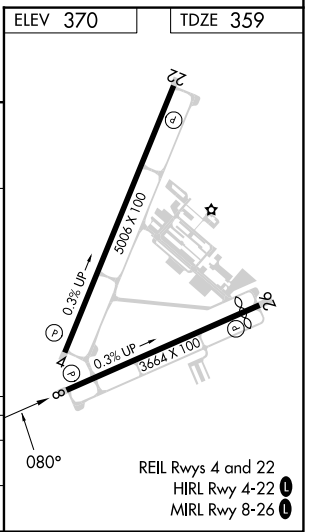
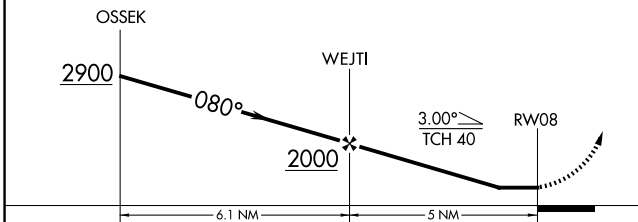
ASOS <b>119.275</b>	NEW YORK APP CON <b>132.75 363.1</b>	CLNC DEL <b>123.85</b>	AUNICOM <b>122.725 (CTAF) 0</b>
------------------------	-----------------------------------------	---------------------------	------------------------------------



NE-2, 15 MAY 2025 to 12 JUN 2025

NE-2, 15 MAY 2025 to 12 JUN 2025

VGSI and RNAV glidepath not coincident (VGSI Angle 3.50/TCH 49).	5300	YORNO	HELON
	▲	⊙	△
		tr 340°	



CATEGORY	A	B	C	D
LNVA MDA	1220-1	861 (900-1)	1220-2½	861 (900-2½)
<b>C</b> CIRCLING	1220-1¼	850 (900-1¼)	1220-2½ 850 (900-2½)	1220-2¾ 850 (900-2¾)