

WAAS CH <b>81819</b>	APP CRS <b>044°</b>	Rwy Idg <b>8400</b> TDZE <b>12</b> Apt Elev <b>13</b>
-------------------------	------------------------	---

# RNAV (GPS) Y RWY 4R

JOHN F KENNEDY INTL (JFK)

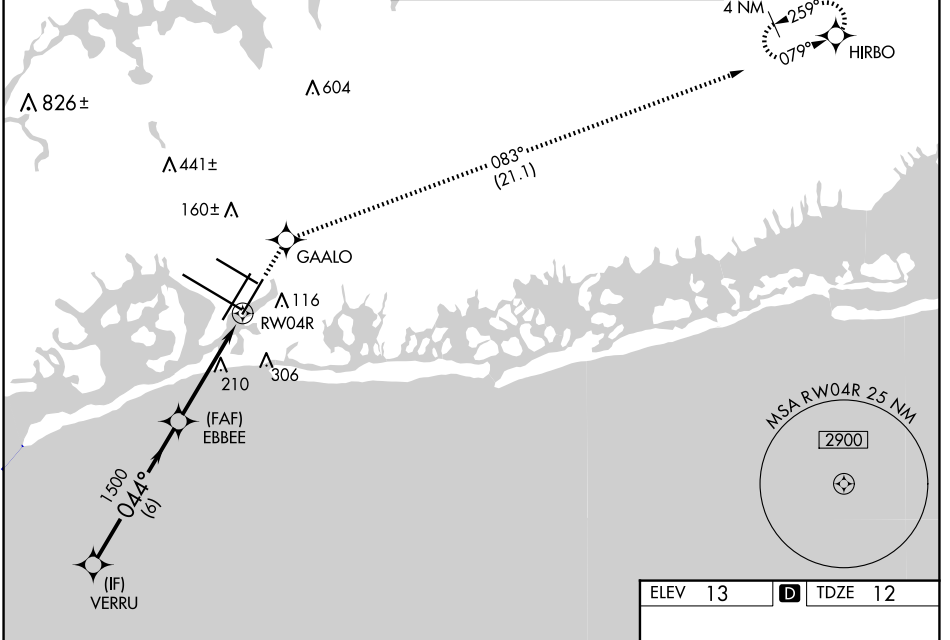
RNP APCH.

Simultaneous approach authorized. LNAV procedure NA during simultaneous operations. Use of FD or AP providing RNAV track guidance required during simultaneous operations. For uncompensated Baro-VNAV systems, LNAV/VNAV NA below -12°C or above 54°C. For inop ALS, increase LNAV/VNAV all Cats visibility to RVR 6000 and LNAV Cat C/D visibility to 1½ SM.



MISSED APPROACH: (Do not exceed 210K until GAALO) Climb to 4000 direct GAALO and on track 083° to HIRBO and hold.

D-ATIS (ARR/DEP) (ARR-NE) (ARR-SW) <b>128.725 117.7 115.4</b>	NEW YORK APP CON <b>128.125 269.0</b>	KENNEDY TOWER Rwys 4R/22L and 13L/31R <b>119.1 281.55</b> Rwys 4L/22R and 13R/31L <b>123.9 281.55</b>	GND CON <b>121.9 348.6</b>	CLNC DEL <b>135.05 348.6</b>	CPDLC
---	--	---	-------------------------------	---------------------------------	-------



NE-2, 15 MAY 2025 to 12 JUN 2025

NE-2, 15 MAY 2025 to 12 JUN 2025

ELEV 13	<b>D</b> TDZE 12
---------	------------------

VGSI and RNAV glidepath not coincident (VGSI Angle 3.00/TCH 69).

VERRU	EBBEE	GAALO	HIRBO
2000	1500	4000	fr 083°
GP 3.00° TCH 53	1500	*1.4 NM to RW04R	*LNAV only
6 NM	3.1 NM	1.4 NM	
044°			

CATEGORY	A	B	C	D
LPV DA		212/18	200 (200-½)	
LNAV/VNAV DA		369/40	357 (400-¾)	
LNAV MDA	520/24	508 (600-½)	520/55	508 (600-1)
<b>C</b> CIRCLING	640-1	627 (700-1)	680-1¾ 667 (700-1¾)	680-2 667 (700-2)

