

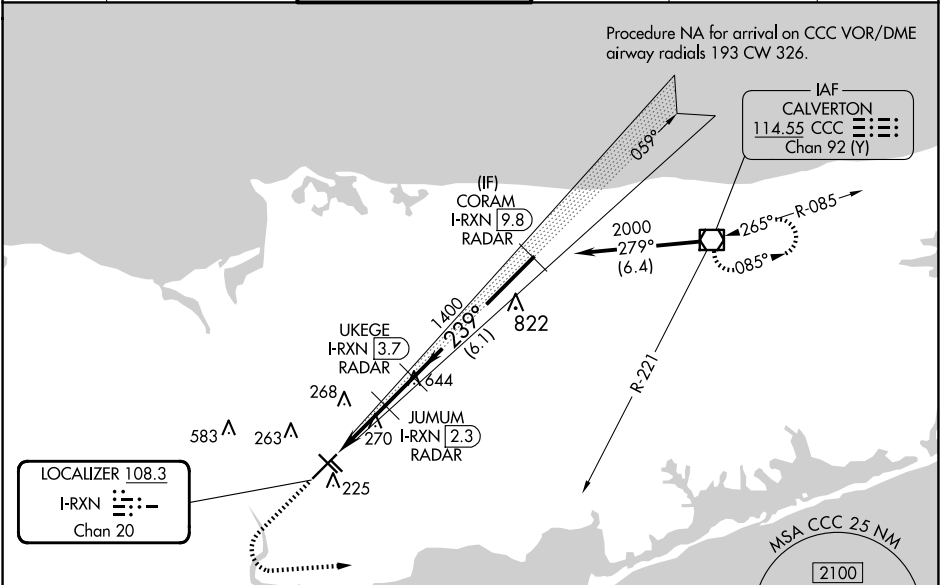
LOC/DME I-RXN <b>108.3</b> Chan <b>20</b>	APP CRS <b>239°</b>	Rwy Idg TDZE Apt Elev	<b>7006</b> <b>99</b> <b>99</b>
---	------------------------	-----------------------------	---------------------------------------

# ILS or LOC RWY 24

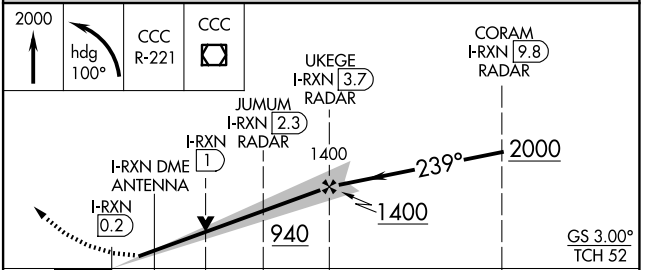
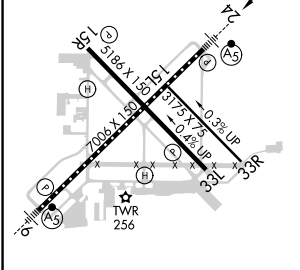
LONG ISLAND MAC ARTHUR (ISP)

RNP APCH - GPS. Aircraft not GPS equipped - RADAR required.	MALSR 	MISSED APPROACH: Climb to 2000, then left turn on heading 100° and CCC R-221 to CCC VOR/DME and hold.
Autopilot coupled approach NA below 800. * RVR 1800 authorized with use of FD or AP or HUD to DA (NA when using HWV altimeter setting).		

ATIS <b>120.725</b>	NEW YORK APP CON <b>120.05 343.75</b>	LONG ISLAND TOWER* <b>119.3 (CTAF) 0335.5</b>	GND CON <b>135.3</b>	CLNC DEL <b>121.85</b>	UNICOM <b>122.95</b>
------------------------	--	--	-------------------------	---------------------------	-------------------------



ELEV 99	<b>D</b>	TDZE 99
---------	----------	---------



CATEGORY	A	B	C	D
S-ILS 24*	299/24 200 (200-1/2)			
S-LOC 24	520/24	421 (500-1/2)	520/40	421 (500-3/4)
<input checked="" type="checkbox"/> CIRCLING	600-1 501 (600-1)	660-1 561 (600-1)	660-1 1/2 561 (600-1 1/2)	960-2 3/4 861 (900-2 3/4)

NE-2, 15 MAY 2025 to 12 JUN 2025

NE-2, 15 MAY 2025 to 12 JUN 2025