

WAAS CH <b>97333</b> <b>W24B</b>	APP CRS <b>240°</b>	Rwy ldg TDZE Apt Elev	<b>5108</b> <b>592</b> <b>592</b>
--	------------------------	-----------------------------	---

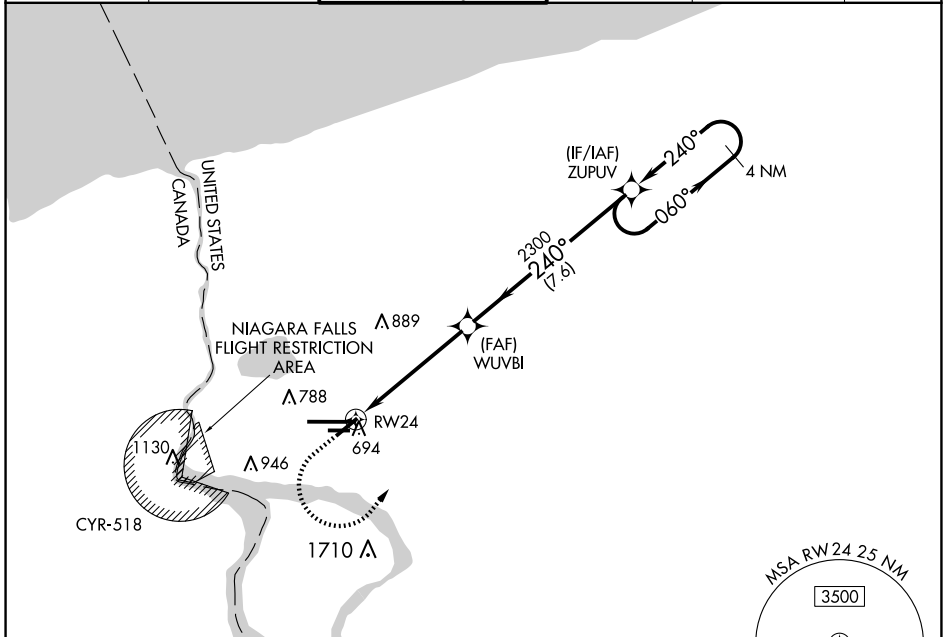
# RNAV (GPS) Y RWY 24

NIAGARA FALLS INTL (IAG)

**▼** DME/DME RNP-0.3 NA. When local altimeter setting not received, use Buffalo Niagara Intl altimeter setting and increase all MDA 60 feet and increase LP Cats C and D visibility 1/8 mile and Circling Cats A and D visibility 1/4 mile. Rwy 6, 10R, 24, 28L helicopter visibility reduction below 1 SM NA. Straight-in Rwy 24 NA at night, Circling Rwy 6, 10R, 24, 28L NA at night.

**▲** MISSED APPROACH: Climb to 1400 then climbing left turn to 3600 direct ZUPOV and hold.

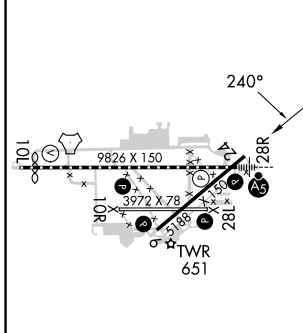
ATIS <b>120.8 269.4</b>	BUFFALO APP CON <b>126.5 317.6</b>	NIAGARA TOWER ★ <b>118.5 (CTAF) 0 349.0</b>	GND CON <b>125.3 275.8</b>	CLNC DEL <b>119.25 251.1</b>	UNICOM <b>122.95</b>
----------------------------	---------------------------------------	--	-------------------------------	---------------------------------	-------------------------



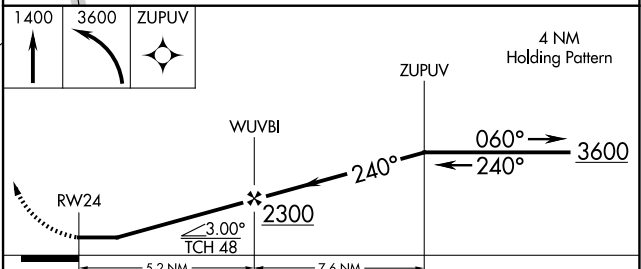
NE-2, 15 MAY 2025 to 12 JUN 2025

NE-2, 15 MAY 2025 to 12 JUN 2025

ELEV 592	<b>D</b>	TDZE 592
----------	----------	----------



## RADAR REQUIRED



CATEGORY		A	B	C	D
LP	MDA	1180-1	588 (600-1)	1180-1 3/4	588 (600-1 3/4)
LN	NAV MDA	1360-1 768 (800-1)	1360-1 1/4 768 (800-1 1/4)	1360-2 1/2	768 (800-2 1/2)
	<b>C</b> CIRCLING	1360-1 768 (800-1)	1360-1 1/4 768 (800-1 1/4)	1360-2 1/2	768 (800-2 1/2)

TDZ/CL Rwy 28R  
REIL Rws 6, 10R, 24, and 28L  
HIRL Rwy 10L-28R  
MIRL Rws 6-24 and 10R-28L