

WAAS CH 66034 W10A	APP CRS 120°	Rwy ldg TDZE 589 Apt Elev 592
--	------------------------	---

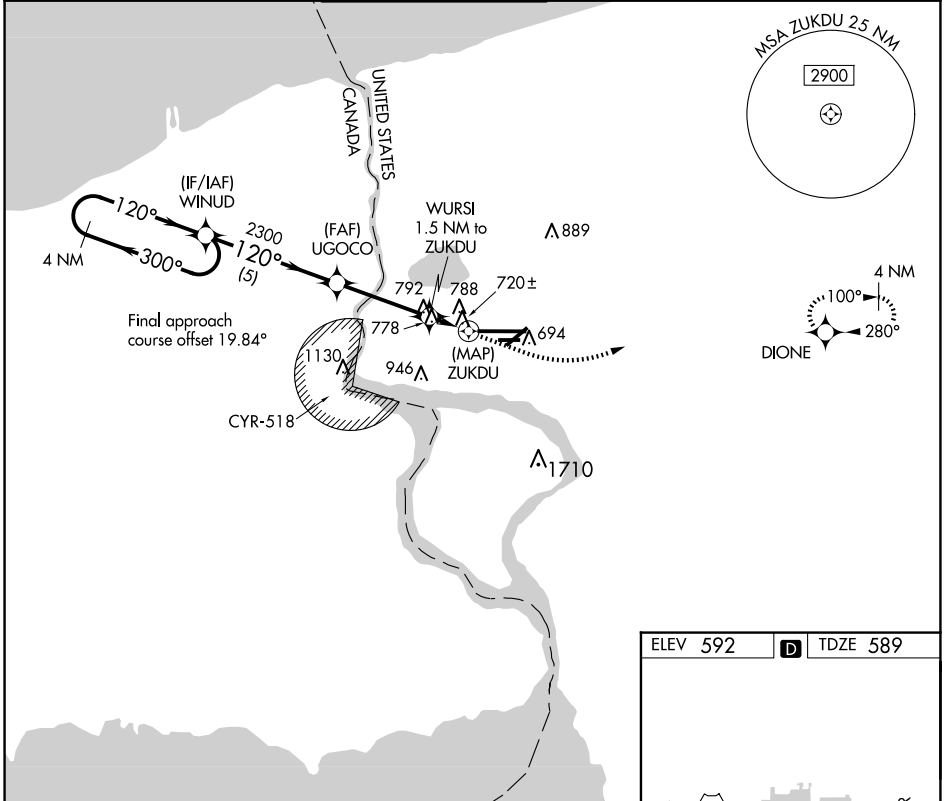
RNAV (GPS) RWY 10L

NIAGARA FALLS INTL (IAG)

▼ DME/DME RNP-0.3 NA. VDP NA with Buffalo Niagara Intl altimeter setting. When local altimeter setting not received, use Buffalo Niagara Intl altimeter setting and increase all MDA 60 feet.
▲ Increase LP Cats C/D and Circling Cats C/D visibility ¼ mile. Rwy 10L helicopter visibility reduction below ¾ SM NA. Rwy 6, 10R, 24, 28L helicopter visibility reduction below 1 SM NA. Circling Rwy 6, 10R, 24, 28L NA at night.

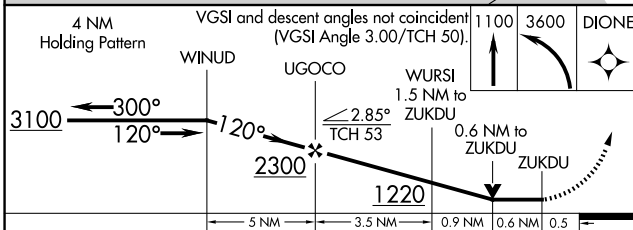
MISSED APPROACH: Climb to 1100 then climbing left turn to 3600 direct DIONE and hold.

ATIS 120.8 269.4	BUFFALO APP CON 126.5 317.6	NIAGARA TOWER ★ 118.5 (CTAF) 0 349.0	GND CON 125.3 275.8	CLNC DEL 119.25 251.1	UNICOM 122.95
----------------------------	---------------------------------------	--	-------------------------------	---------------------------------	-------------------------



NE-2, 15 MAY 2025 to 12 JUN 2025

NE-2, 15 MAY 2025 to 12 JUN 2025



ELEV 592	D	TDZE 589
----------	----------	----------

The inset chart shows the RWY 10L approach with various navigation aids and altitudes. Key features include the 10L runway, 10R, 28R, and 28L runways, and the TWR 651. Altitudes shown are 9826 X 150, 3972 X 78, 100, 101, 120°, 10R, 28L, 28R, and 651.

CATEGORY	A	B	C	D
LP MDA	980-1	391 (400-1)	980-1 1/8	391 (400-1 1/8)
LNAV MDA	1040-1	451 (500-1)	1040-1 3/8	451 (500-1 3/8)
C CIRCLING	1100-1	508 (600-1)	1280-2 688 (700-2)	1280-2 1/4 688 (700-2 1/4)

TDZ/CL Rwy 28R **1**
 REIL Rws 6, 10R, 24, and 28L **1**
 HIRL Rwy 10L-28R **1**
 MIRL Rws 6-24 and 10R-28L **1**