

WAAS CH 97625 W36A	APP CRS 355°	Rwy Idg TDZE 1195 Apt Elev 1219	5000 1195 1219
--	------------------------	---	---

RNAV (GPS) RWY 36

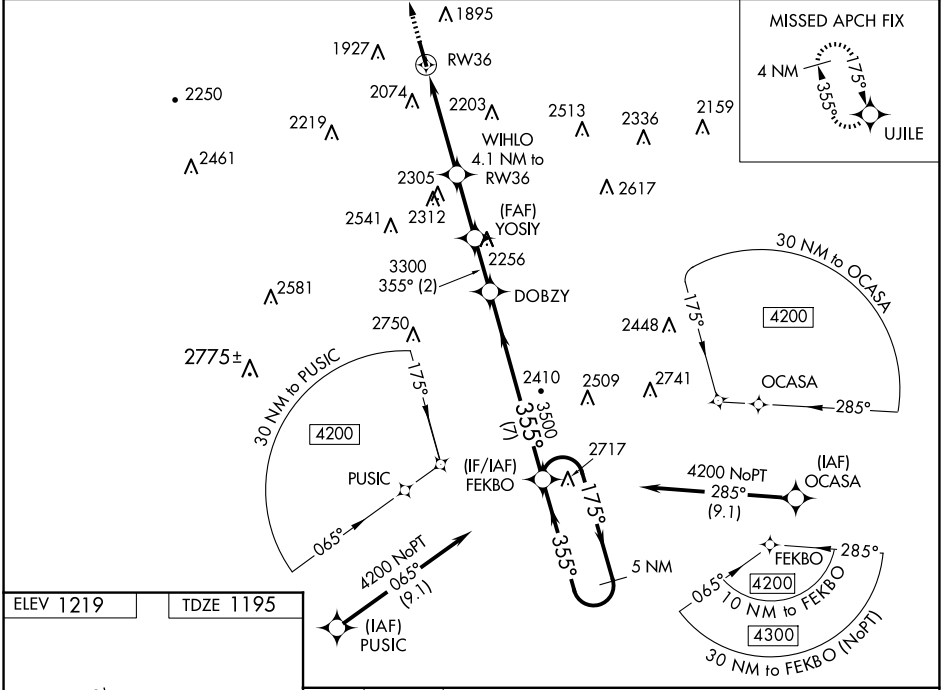
HORNELL MUNI (HTF)

RNP APCH - GPS

▽ For uncompensated Baro-VNAV systems, LNAV/VNAV NA below -17°C or above 54°C. Helicopter visibility reduction below ¾ SM NA. When local altimeter setting not received, use Dansville altimeter setting and increase all DA 105 feet, all MDA 120 feet and LPV all Cats visibility ¾ mile, LNAV/VNAV all Cats visibility 1 mile, and LNAV Cat B visibility ½ mile and Cat C visibility ½ mile. VDP and Baro-VNAV NA with Dansville altimeter setting. Circling Rwy 18 NA at night.

MISSED APPROACH:
Climb to 3900 direct
UJILE and hold.

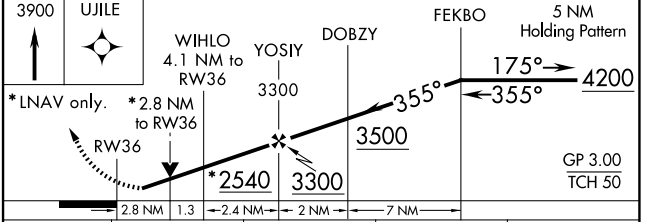
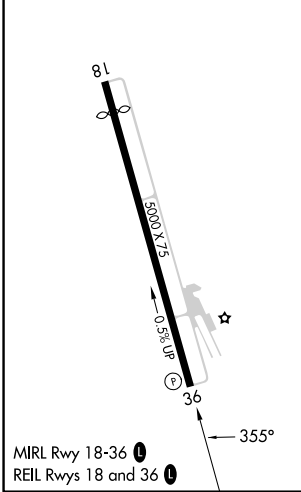
AWOS-3 118.475	CLEVELAND CENTER 124.325 353.85	UNICOM 122.7 (CTAF) 0
--------------------------	---	---------------------------------



NE-2, 15 MAY 2025 to 12 JUN 2025

NE-2, 15 MAY 2025 to 12 JUN 2025

ELEV 1219	TDZE 1195
------------------	------------------



CATEGORY	A	B	C	D
LPV DA	1660-1½	465 (500-1½)		NA
LNAV/ VNAV DA	2343-4	1148 (1200-4)		NA
LNAV MDA	2120-1¼	925 (900-1¼)	2120-2½ 925 (900-2½)	NA
CIRCLING	2360-1¼ 1141 (1200-1¼)	2380-1½ 1161 (1200-1½)	2440-3 1221 (1300-3)	NA