

(HAR.HAR5) 23278

AL-150 (FAA)

MC GUIRE FIELD  
(JOINT BASE MC GUIRE DIX LAKEHURST) (WRI)  
WRIGHTSTOWN, NEW JERSEY

# HARRISBURG FIVE ARRIVAL

D-ATIS

110.6 270.1  
PHILADELPHIA APP CON  
128.4 343.6  
MC GUIRE APP CON  
126.475 363.8

EAST TEXAS  
110.2 ETX  
Chan 39

ROBBINSVILLE  
113.8 RBV  
Chan 85

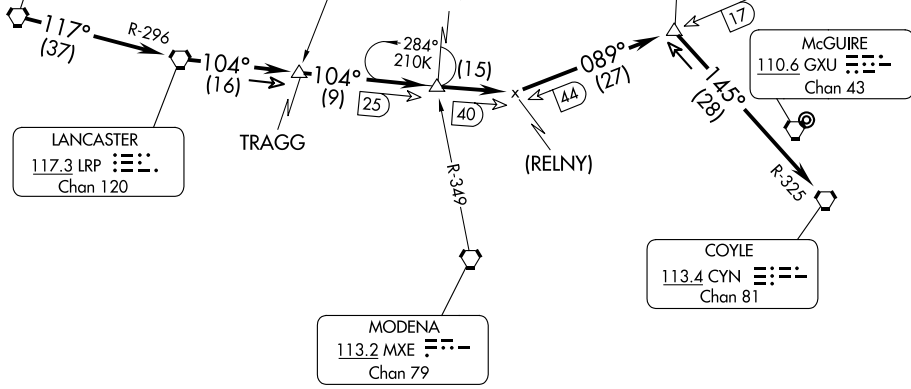
HARRISBURG  
115.35 HAR  
Chan 100 (Y)

NAGGS

BUNTS

McGUIRE  
110.6 GXU  
Chan 43

NE-2, 15 MAY 2025 to 12 JUN 2025



NE-2, 15 MAY 2025 to 12 JUN 2025

NOTE: Route depicted beyond Naggs Int is for lost communications or radar outage only.

NOTE: Not for use by fighter type aircraft.

NOTE: Descent below 3500 prior to NAGGS may transition below the KPHL class Bravo Airspace.

NOTE: Chart not to scale

## ARRIVAL ROUTE DESCRIPTION

From over HAR VORTAC via HAR R-117 and LRP R-296 to LRP VORTAC. Thence via LRP R-104 to LRP R-104/40 DME and RBV R-269/44 DME. Thence via RBV R-269 to NAGGS INT. Thence via CYN R-325 to CYN VORTAC. Expect radar vector to final approach 8 DME west of GXU VORTAC. Expect descent below 10000 after HAR VORTAC.

HARRISBURG FIVE ARRIVAL  
(HAR.HAR5) 22MAY97

MC GUIRE FIELD  
(JOINT BASE MC GUIRE DIX LAKEHURST) (WRI)  
WRIGHTSTOWN, NEW JERSEY