

| | | |
|--|------------------------|--|
| WAAS CH 87118 W01A | APP CRS 012° | Rwy ldg 5000 TDZE 324 Apt Elev 328 |
|--|------------------------|--|

RNAV (GPS) RWY 1

FLOYD BENNETT MEML (GFL)

⚠ For uncompensated Baro-VNAV systems, LNAV/VNAV NA below -18°C (0°F) or above 54°C (130°F). DME/DME RNP-0.3 NA. When local altimeter setting not received use Albany altimeter setting and increase all DA 91 feet and all MDA 100 feet; increase LNAV/VNAV all Cats ½ SM, LNAV Cat C/D and Circling Cat C visibility ¼ SM. For inoperative ALS when using Albany altimeter setting, increase LPV all Cats visibility to ½ SM. Baro-VNAV and VDP NA when using Albany altimeter setting. Circling Rwy 12, 30 NA at night. Rwy 12, 30 helicopter visibility reduction below 1 SM NA.

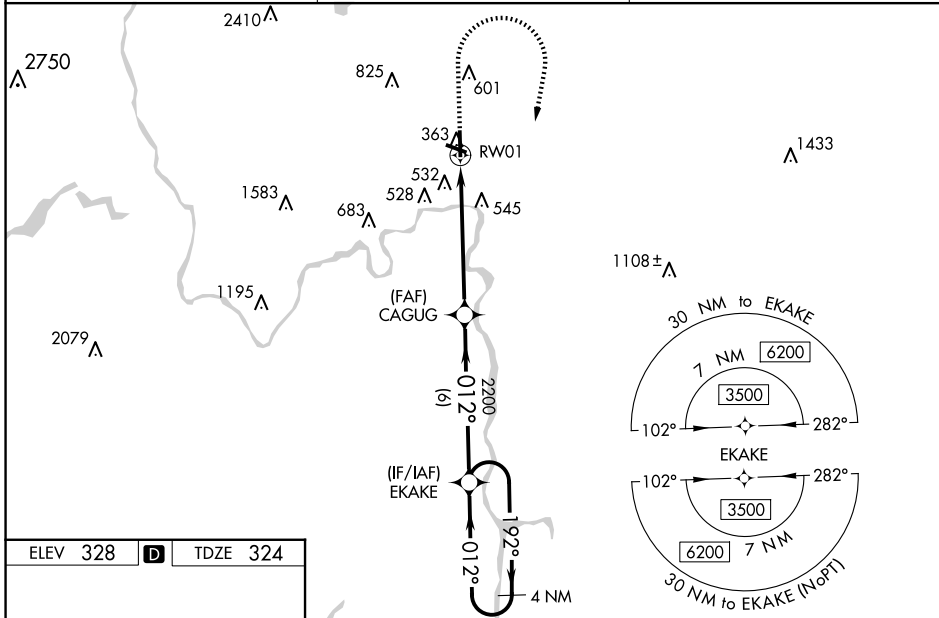
MALSR



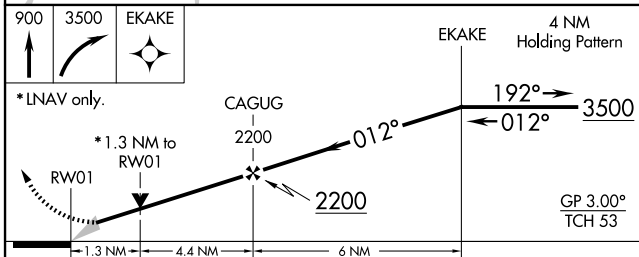
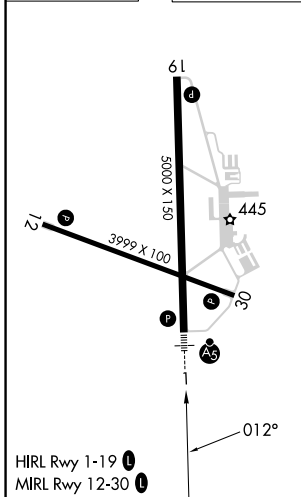
MISSED APPROACH:
Climb to 900 then climbing right turn to 3500 direct EKAKE and hold.

❄ -19°C

| | | |
|------------------------|--|---------------------------------|
| ASOS 119.925 | ALBANY APP CON 132.825 307.2 | UNICOM 123.0 (CTAF) 0 |
|------------------------|--|---------------------------------|



| | | |
|----------|----------|----------|
| ELEV 328 | D | TDZE 324 |
|----------|----------|----------|



| CATEGORY | A | B | C | D |
|-------------------|----------------------|----------------------|------------------------|-------------------------|
| LPV DA | | 524-½ | 200 (200-½) | |
| LNAV/VNAV DA | | 835-1¼ | 511 (600-1¼) | |
| LNAV MDA | 800-½ | 476 (500-½) | 800-1 | 476 (500-1) |
| C CIRCLING | 840-1 512 (600-1) | 860-1 532 (600-1) | 940-1¾ 612 (700-1¾) | 1960-3 1632 (1700-3) |

NE-2, 15 MAY 2025 to 12 JUN 2025

NE-2, 15 MAY 2025 to 12 JUN 2025