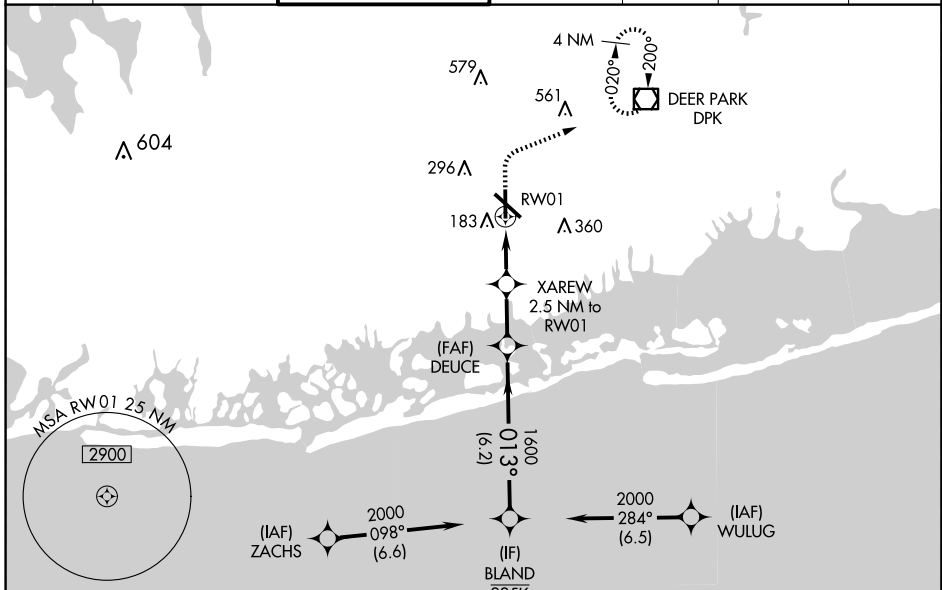


WAAS CH <b>82524</b> <b>W01A</b>	APP CRS <b>013°</b>	Rwy Idg TDZE <b>72</b> Apt Elev <b>80</b>	<b>5517</b>
--	------------------------	---	-------------

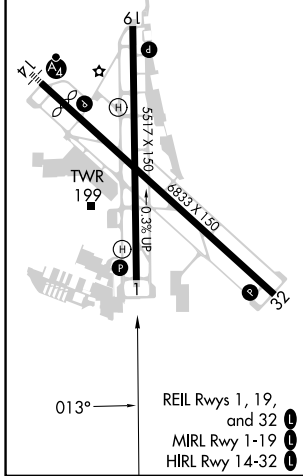
# RNAV (GPS) RWY 1

REPUBLIC (F'R.G)

RNP APCH - GPS.		MISSED APPROACH: (Do not exceed 190K until DPK VOR/DME) Climb to 800 then climbing right turn to 3000 direct DPK VOR/DME and hold, continue climb-in-hold to 3000.			
For uncompensated Baro-VNAV systems, LNAV/VNAV NA below -12°C or above 54°C. Rwy 1 helicopter visibility reduction below 3/4 SM NA.		GND CON <b>121.6 269.6</b>		CLNC DEL <b>128.25</b>	CLNC DEL <b>128.25</b> (When twr closed)
ATIS <b>126.65</b>	NEW YORK APP CON <b>128.125 269.0</b>	REPUBLIC TOWER * <b>118.8 (CTAF) 0 279.65</b>	UNICOM <b>122.95</b>		



ELEV 80	<b>D</b>	TDZE 72
---------	----------	---------



800	3000	DPK	VGSi and RNAV glidepath not coincident (VGSi Angle 3.09°/TCH 44).			
				BLAND DEUCE XAREW 2.5 NM to RW01 RW01 1.1 NM to RW01 1600 880 1600 2000 013° GP 3.00° TCH 37		
1.1		1.4 NM		2.2 NM		6.2 NM
CATEGORY	A	B	C	D		
LPV DA	335-7/8		263 (300-7/8)			
LNAV/VNAV DA	370-7/8		298 (300-7/8)			
LNAV MDA	460-1 388 (400-1)		460-1 1/8 388 (400-1 1/8)			
CIRCLING	640-1 560 (600-1)	720-1 640 (700-1)	860-2 1/4 780 (800-2 1/4)		1000-3 920 (1000-3)	

NE-2, 15 MAY 2025 to 12 JUN 2025

NE-2, 15 MAY 2025 to 12 JUN 2025