

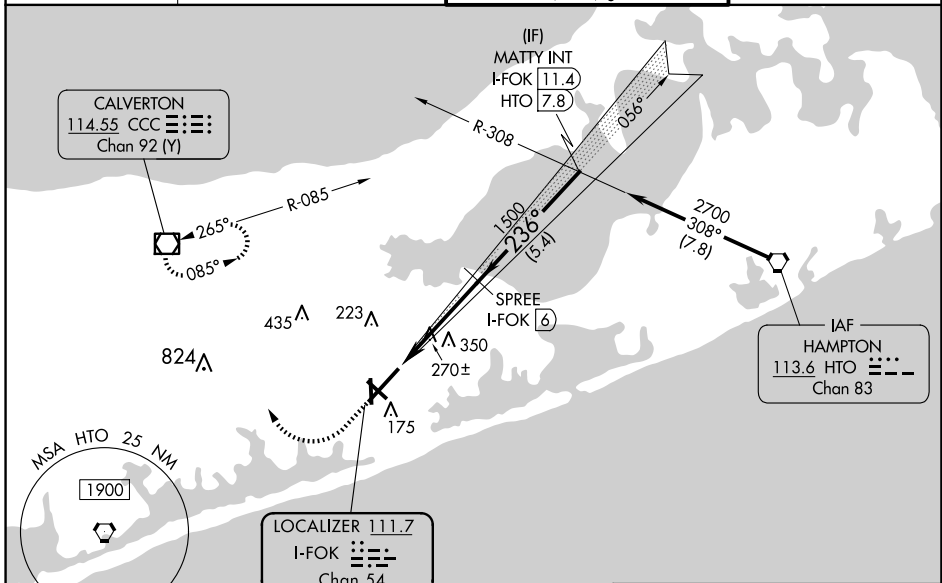
LOC/DME I-FOK <b>111.7</b> Chan <b>54</b>	APP CRS <b>236°</b>	Rwy Idg TDZE <b>66</b> Apt Elev <b>66</b>	<b>9002</b>
---	------------------------	---	-------------

# ILS or LOC RWY 24

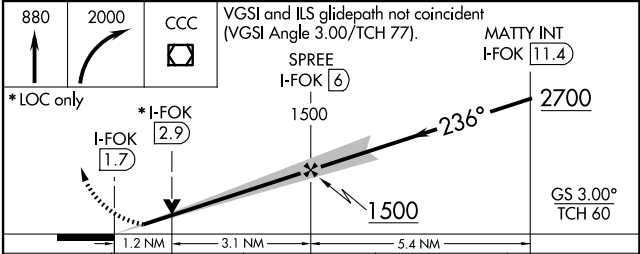
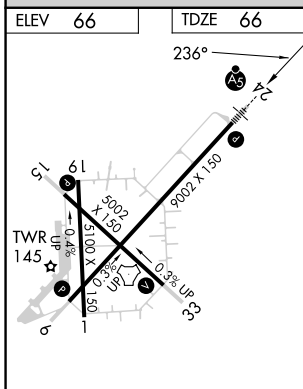
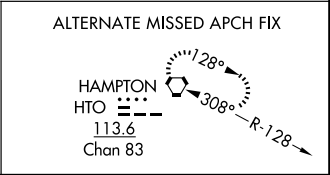
FRANCIS S GABRESKI (F'OK)

<p>Circling Rwy 15 NA at night.</p>	<p>MALS R</p>	<p>MISSED APPROACH: Climb to 880 then climbing right turn to 2000 direct CCC VOR/DME and hold.</p>	

ASOS <b>119.925</b>	NEW YORK APP CON <b>125.975 343.65</b>	SUFFOLK COUNTY TOWER ★ <b>125.3 (CTAF) 0 236.6</b>	GND CON <b>121.8 225.4</b>
------------------------	---	---	-------------------------------



DME required for LOC only.



HIRL Rwy 6-24	MIRL Rwy 15-33	REL Rwy 6, 15, and 33			
FAF to MAP 4.3 NM					
Knots	60	90	120	150	180
Min:Sec	4:18	2:52	2:09	1:43	1:26

CATEGORY	A	B	C	D
S-ILS 24	266-½ 200 (200-½)			
S-LOC 24	520-½	454 (500-½)	520-¾	454 (500-¾)
<input checked="" type="checkbox"/> CIRCLING	600-1 534 (600-1)	620-1 554 (600-1)	700-1¾ 634 (700-1¾)	740-2¼ 674 (700-2¼)

NE-2, 15 MAY 2025 to 12 JUN 2025

NE-2, 15 MAY 2025 to 12 JUN 2025