

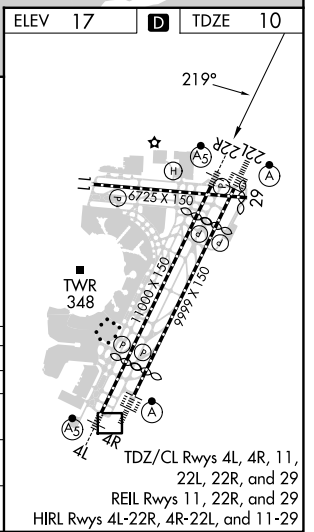
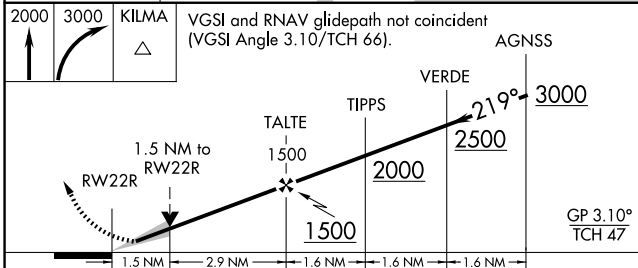
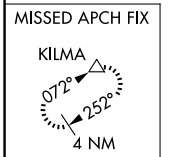
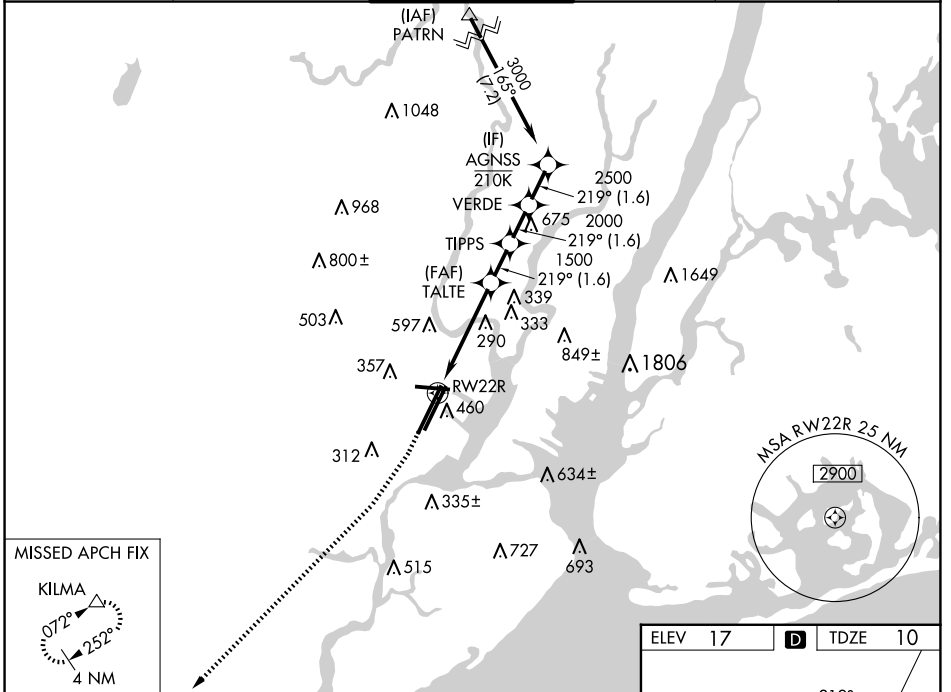
WAAS CH <b>61244</b> <b>W22B</b>	APP CRS <b>219°</b>	Rwy Idg TDZE Apt Elev	<b>9559</b> <b>10</b> <b>17</b>
--	------------------------	-----------------------------	---------------------------------------

# RNAV (GPS) RWY 22R

NEWARK LIBERTY INTL (EWR)

RNP APCH - GPS.			MALSR	MISSED APPROACH: Climb to 2000, then climbing right turn to 3000 direct KILMA and hold.		
<p><b>▼</b> Circling NA south of Rwy 11-29. When Circling to Rwy 29 at night, operational VGSI required, remain on or above VGSI glidepath until threshold. For uncompensated Baro-VNAV systems, LNAV/VNAV NA below -12°C or above 54°C.</p>						

D-ATIS	NEWARK APP CON	NEWARK TOWER	GND CON	CLNC DEL	CPDLC
<b>115.7 134.825</b>	<b>128.55 379.9</b>	<b>118.3 257.6</b>	<b>121.8</b>	<b>118.85</b>	



CATEGORY	A		B		C		D
LPV DA			210/18		200 (200-½)		
LNAV/VNAV DA			468/45		458 (500-¾)		
LNAV MDA	560/24 550 (600-½)		560/60 550 (600-1¼)				
<b>C</b> CIRCLING	660-1 643 (700-1)		900-2¾ 883 (900-2¾)		900-3 883 (900-3)		

NE-2, 15 MAY 2025 to 12 JUN 2025

NE-2, 15 MAY 2025 to 12 JUN 2025