

APP CRS	Rwy Idg	6725
108°	TDZE	17
	Apt Elev	17

RNAV (GPS) RWY 11

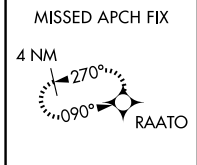
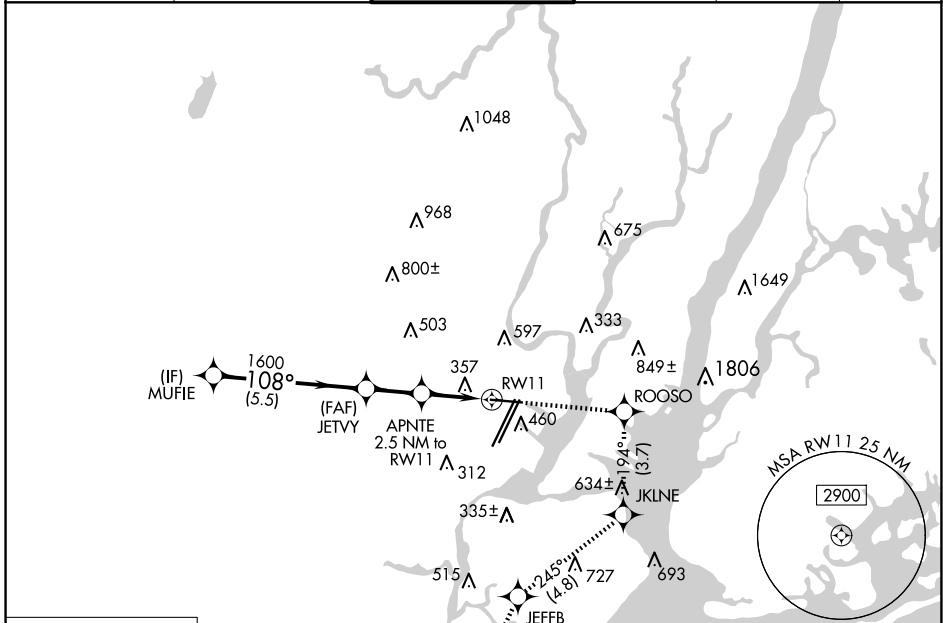
NEWARK LIBERTY INTL (EWR)

RNP APCH - GPS.

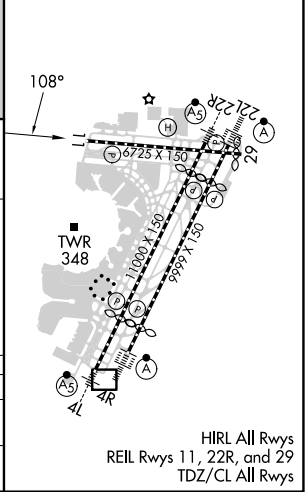
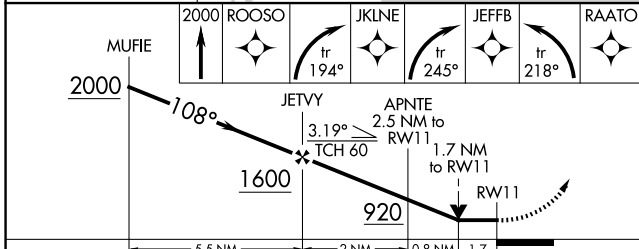
▼ Circling NA south of Rwy 11-29. When Circling to Rwy 29 at night, operational VGSJ required, remain on or above VGSJ glidepath until threshold. Rwy 11 helicopter visibility reduction below RVR 4000 NA.

MISSED APPROACH: (Do not exceed 230K until JKLNE) Climb to 2000 direct ROOSO and right turn on track 194° to JKLNE and right turn on track 245° to JEFFB and left turn on track 218° to RAATO and hold.

D-ATIS	NEWARK APP CON	NEWARK TOWER	GND CON	CLNC DEL	CPDLC
115.7 134.825	128.55 379.9	118.3 257.6	121.8	118.85	



ELEV 17	D TDZE 17
---------	------------------



CATEGORY	A	B	C	D
LNVA MDA	620/55	603 (700-1)	620-1¾	603 (700-1¾)
C CIRCLING	660-1	643 (700-1)	900-2¾ 883 (900-2¾)	900-3 883 (900-3)

NE-2, 15 MAY 2025 to 12 JUN 2025

NE-2, 15 MAY 2025 to 12 JUN 2025

HIRL All Rwy's
REIL Rwy's 11, 22R, and 29
TDZ/CL All Rwy's